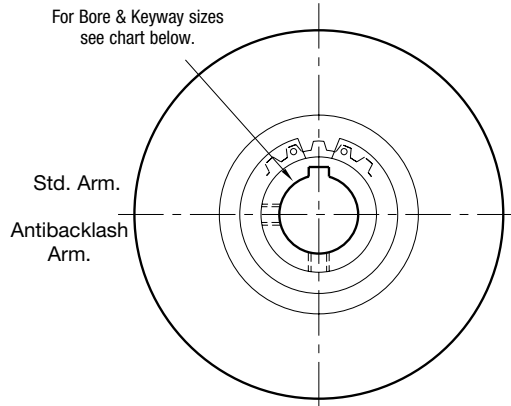
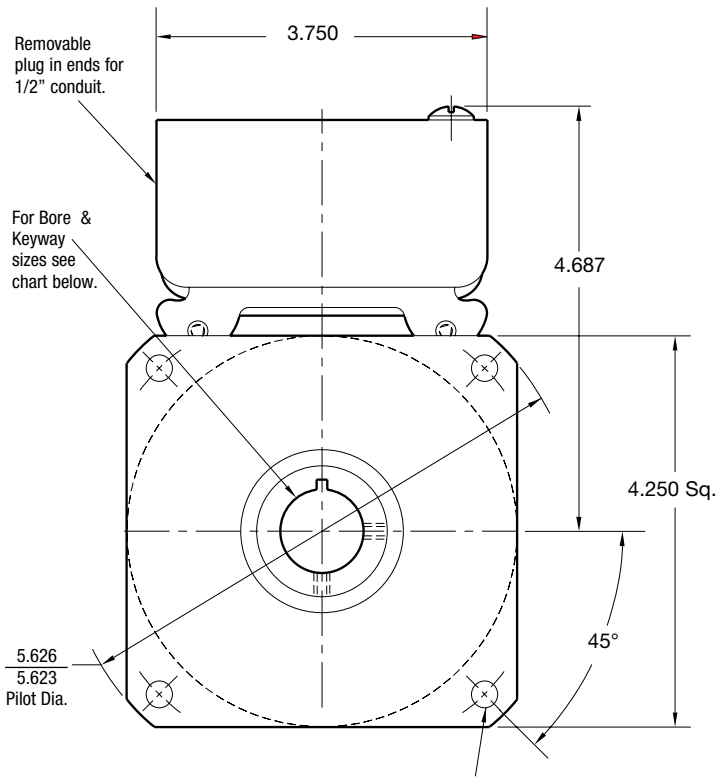


SFC Series Clutch Coupling

SFC-400 Flange Mounted



ARMATURE VIEW

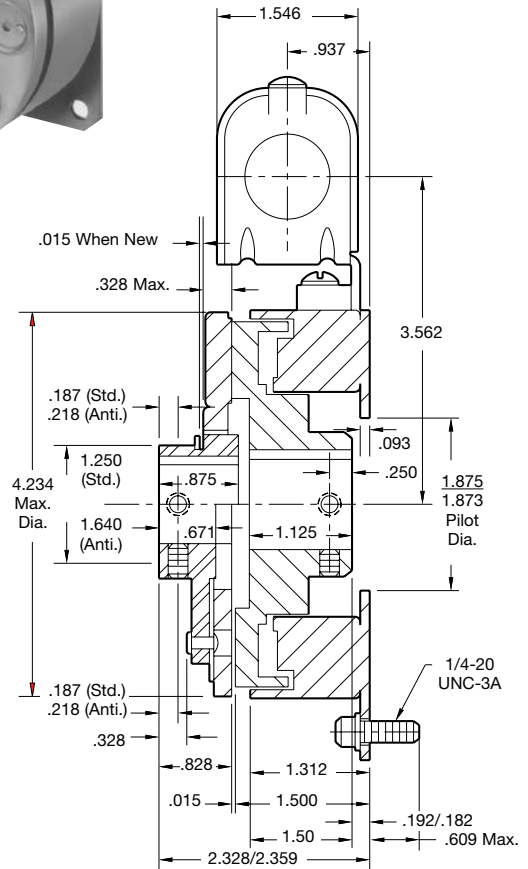


FIELD VIEW

*Mounting holes are within .010 of true position relative to pilot diameter.

Customer Shall Maintain:

1. Squareness of field mounting face with rotor shaft within .003 T.I.R. measured at pilot diameter.
2. Concentricity of field mounting pilot diameter with rotor mounting shaft within .003 T.I.R.
3. Rotor and armature shafts in line within .003 T.I.R.



Bore and Keyway Dimensions

| Armature Bore Dia. | Keyway | Rotor Bore Dia. | Keyway |
|--------------------|-------------|-----------------|-------------|
| .501/.500 | .125 x .062 | .501/.500 | .125 x .062 |
| *.563/.562 | | | |
| .626/.625 | | .626/.625 | |
| *.688/.687 | .187 x .093 | .751/.750 | .187 x .093 |
| .751/.750 | | .876/.875 | |
| .876/.875 | | 1.001/1.000 | |

*Available on special order only

| | |
|------------------|----------------|
| Static Torque | 270 lb. in. |
| Maximum Speed | 4,500 rpm |
| Standard Voltage | D.C. 6, 24, 90 |

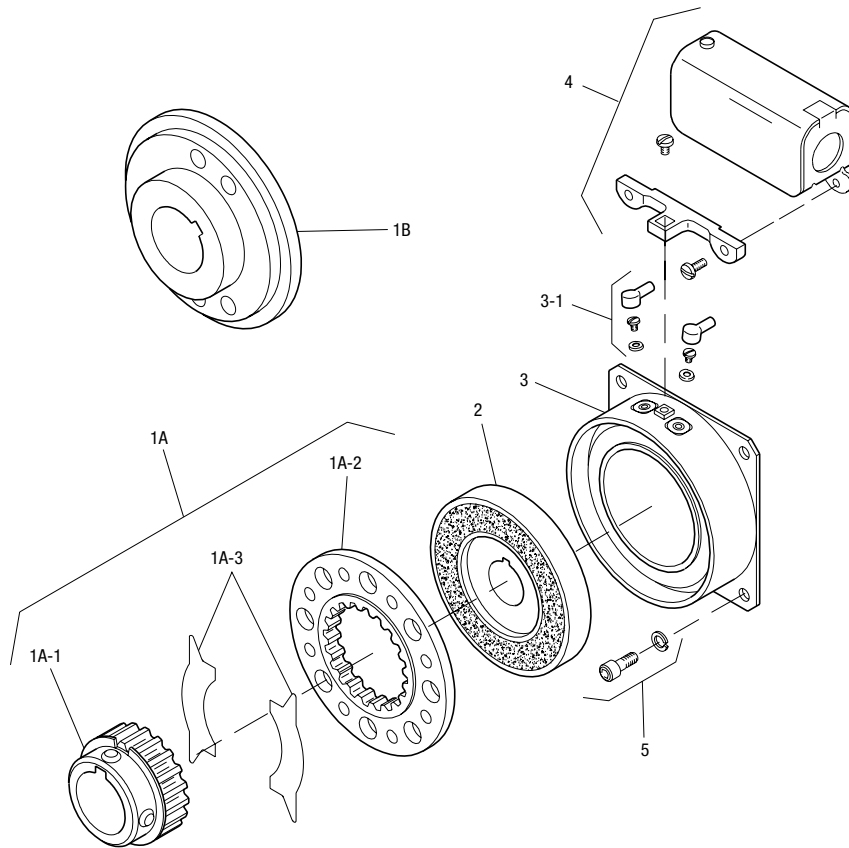
All dimensions are nominal unless otherwise noted.

Information on inertia and weights begins on page 239. Coil data is on pages 250 and 251.

SFC Series Clutch Coupling

SFC-400 Flange Mounted

Drawing I-25697



| Item | Description | Part Number | Qty. |
|------|-----------------------|--------------|------|
| 1A | Armature and Hub | | |
| 1A-1 | Armature Hub | | 1 |
| | 1/2" Bore | 5104-541-002 | |
| | 5/8" Bore | 5104-541-004 | |
| | 3/4" Bore | 5104-541-006 | |
| | 7/8" Bore | 5104-541-007 | |
| 1A-2 | Armature | 5125-111-001 | 1 |
| 1A-3 | Release Spring | 5104-101-003 | 1 |
| 1B | Antibacklash Armature | | 1 |
| | 1/2" Bore | 5367-111-003 | |
| | 5/8" Bore | 5367-111-005 | |
| | 3/4" Bore | 5367-111-007 | |
| | 7/8" Bore | 5367-111-008 | |
| 2 | Rotor | | 1 |
| | 1/2" Bore | 5104-751-033 | |
| | 5/8" Bore | 5104-751-034 | |
| | 3/4" Bore | 5104-751-035 | |
| | 7/8" Bore | 5104-751-036 | |
| | 1" Bore | 5104-751-037 | |
| 3 | Field | | 1 |
| | 6 Volt | 5104-451-032 | |
| | 24 Volt | 5104-451-033 | |
| | 90 Volt | 5104-451-034 | |

| Item | Description | Part Number | Qty. |
|------|--------------------|--------------|------|
| 3-1 | Terminal Accessory | 5103-101-002 | 1 |
| 4 | Conduit Box | 5200-101-010 | 1 |
| 5 | Mounting Accessory | 5104-101-002 | 1 |

How to Order:

1. Specify Type of Armature Desired.
2. Specify Bore Size for Item 1A-1 or 1B and Item 2.
3. Specify Voltage for Item 3.
4. See Controls Section.

Example:

SFC-400 Clutch Coupling per I-25697 - 90 Volt, 3/4" Armature Hub Bore, 3/4" Rotor Bore

These units, when used in conjunction with the correct Warner Electric conduit box, meet standards set forth in UL508 and are listed under guide card #NMTR2, file #59164.

These units are CSA certified under file #LR11543.

Refer to Service Manual P-0200-WE