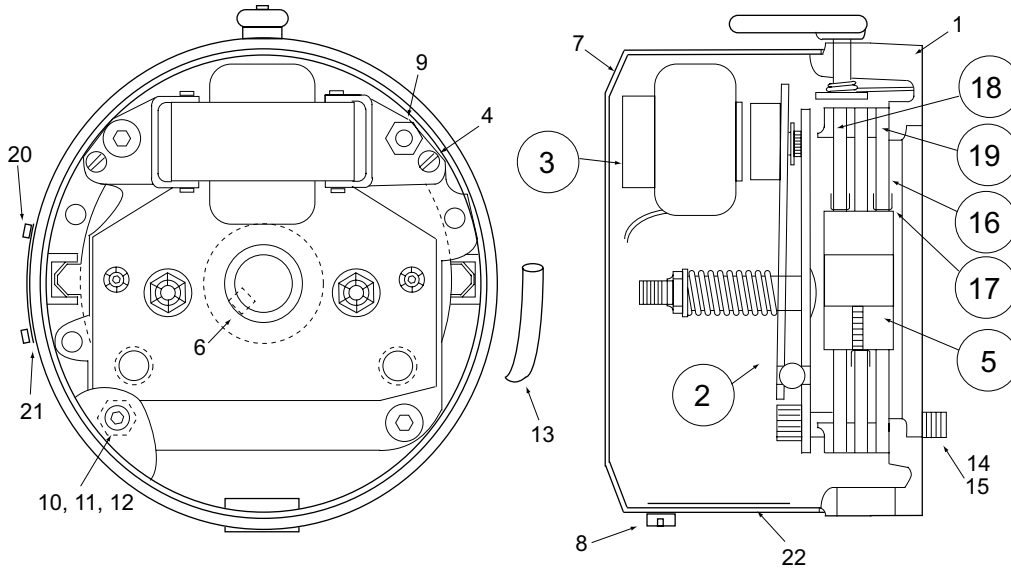


UNIBRAKES

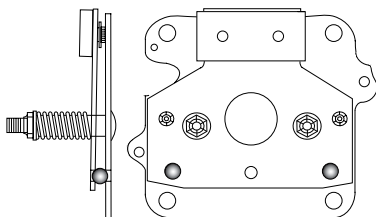
F-Series AC Rear-Mounted Brakes



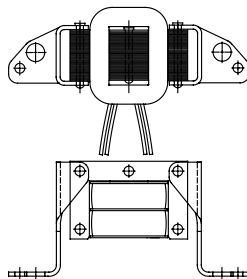
Component Parts

| Item | Description | Part No. | Qty. | Item | Description | |
|-------|-----------------------------------|-------------------------|------------|------|-------------|---|
| 2 | Support & Armature Plate Assembly | 6, 10, & 15 ft.lb. | 79060-07-A | 1 | 1 | Brake Head Machined |
| | | 3 ft.lb. | 79060-07-B | 1 | 4 | 10-32 X 5/16 Slotted Hex Head With Split LW |
| | | 275/550V 60HZ | 79137-18-G | 1 | 6 | 3/16" SQR X 1" Key |
| | | 230/460V 60HZ | 79137-18-J | 1 | 7 | Brake Cover |
| | | 115/230V 60HZ | 79137-18-K | 1 | 8 | Cover Plug |
| 3 | Coil and Pole Assembly | 200/400V 60HZ | 79137-18-L | 1 | 9 | Stud Extension |
| | | 208/416V 50HZ | 79137-18-M | 1 | 10 | 5/16" Split Lock Washer |
| | | 115/230V 50HZ | 79137-18-N | 1 | 11 | 10-32 X 5/8 Socket Head Cap Screw |
| | | 230/460V 50HZ | 79137-18-P | 1 | 12 | #10 Flat Washer |
| | | 5/8 Bore | 58D22 | 1 | 13 | Insulating Sleeve |
| 5 | Hub Assembly | 3/4 Bore | 58D23 | 1 | 14 | 3/8-16 X 2-1/2" Socket Cap Screw |
| | | 7/8 Bore | 58D24 | 1 | 15 | 3/8" Hi-Collar Lock Washer |
| | | | | | 20 | 9 Gage Escutcheon Pin |
| 16 | Brake Disc (Individual) | 327213 | 1 | 21 | Nameplate | |
| 16,17 | Disc Plate Kit | 3 & 6 ft.lb. (1 disc) | 327212-4 | 1 | 22 | Instruction Label |
| 18,19 | (Includes Disc & Pressure Plates) | 10 ft.lb. (2 discs) | 327212-5 | 1 | | |
| | | 15 ft.lb. (3 discs) | 327212-6 | 1 | | |

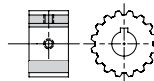
Item 2



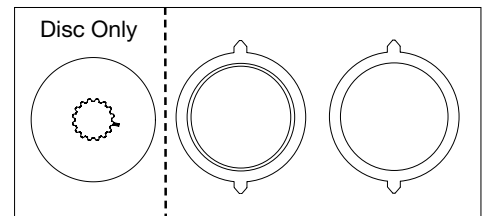
Item 3



Item 5

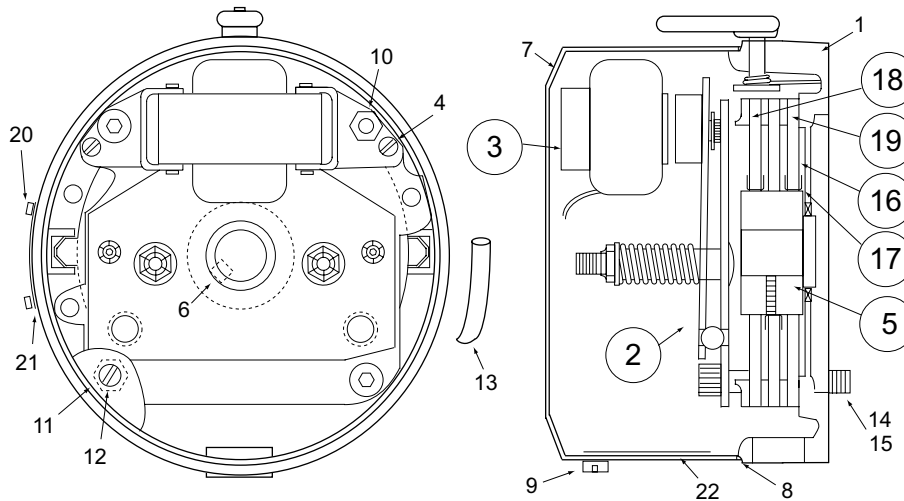


Disc Plate Kit Items 13-14-15-16



Service Parts

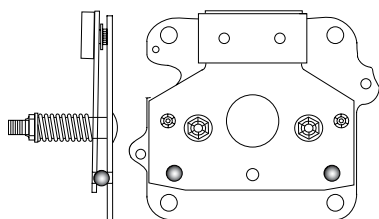
F-Series AC Rear-Mounted Brakes



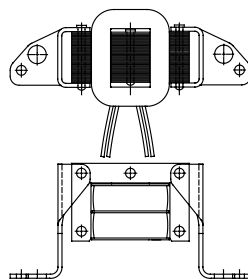
Component Parts

| Item | Description | Part No. | Qty. | Item | Description | |
|-------|-----------------------------------|-------------------------|------------|------|-------------|---|
| 2 | Support & Armature Plate Assembly | 6, 10, & 15 ft.lb. | 79060-07-A | 1 | 1 | Brake Head Machined |
| | | 3 ft.lb. | 79060-07-B | 1 | 4 | 10-32 X 5/16 Slotted Hex Head With Split LW |
| | | 275/550V 60HZ | 79137-18-G | 1 | 6 | 3/16" SQR X 1" Key |
| | | 230/460V 60HZ | 79137-18-J | 1 | 7 | Brake Cover |
| | | 115/230V 60HZ | 79137-18-K | 1 | 8 | Brake Cover Gasket |
| 3 | Coil and Pole Assembly | 200/400V 60HZ | 79137-18-L | 1 | 9 | Cover Plug |
| | | 208/416V 50HZ | 79137-18-M | 1 | 10 | Stud Extension |
| | | 115/230V 50HZ | 79137-18-N | 1 | 11 | 5/16" Split Lock Washer |
| | | 230/460V 50HZ | 79137-18-P | 1 | 12 | 10-32 X 5/8" SS Pan Head With O-Ring |
| | | | | | 13 | Insulating Sleeve |
| 5 | Hub Assembly | 5/8 Bore | 58D29 | 1 | 14 | 3/8-16 X 2-1/2" Socket Cap Screw |
| | | 3/4 Bore | 58D30 | 1 | 15 | 3/8" Hi-Collar Lock Washer |
| | | 7/8 Bore | 58D31 | 1 | 20 | 9 Gage Escutcheon Pin |
| 16 | Brake Disc (Individual) | 327213 | 1 | 21 | Nameplate | |
| 16,17 | Disc Plate Kit | 3 & 6 ft.lb. (1 disc) | 327212-4 | 1 | 22 | Instruction Label |
| 18,19 | (Includes Disc & Pressure Plates) | 10 ft.lb. (2 discs) | 327212-5 | 1 | | |
| | | 15 ft.lb. (3 discs) | 327212-6 | 1 | | |

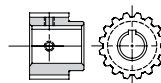
Item 2



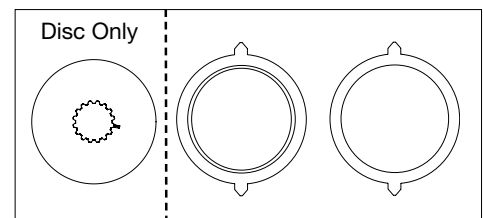
Item 3



Item 5

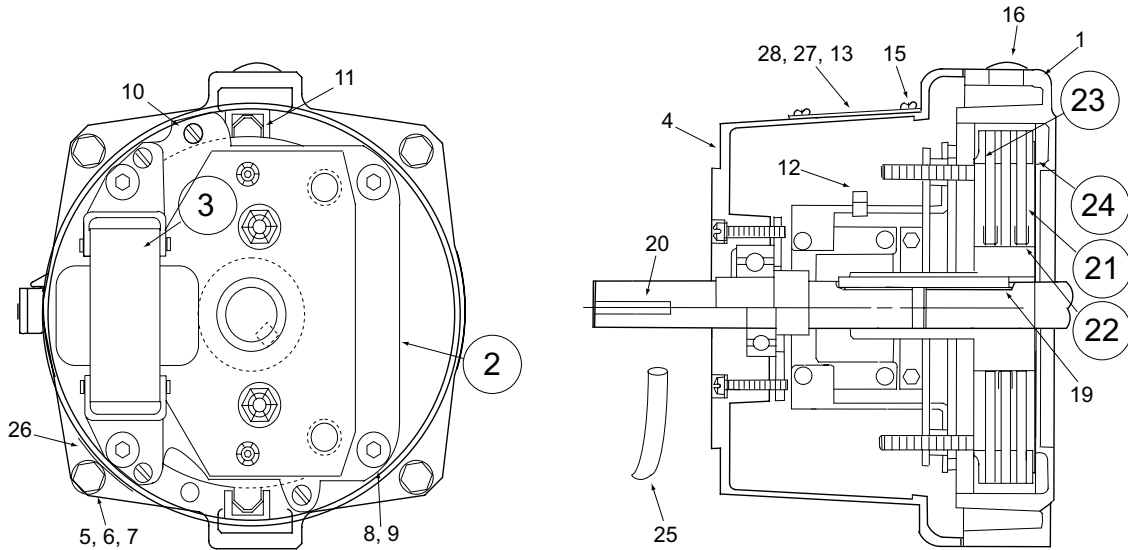


Disc Plate Kit Items 13-14-15-16



Service Parts

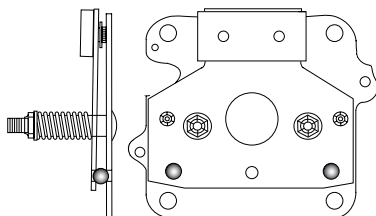
M-Series AC Coupler Brakes



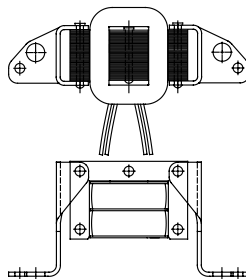
Component Parts

| Item | Description | Part No. | Qty. | Item | Description | | | |
|------|-----------------------------------|--------------------|-----------------------------------|-------------------------|--------------------------|---------------------------------------|-----------|-----------------------------------|
| 2 | Support & Armature Plate Assembly | 6, 10, & 15 ft.lb. | 79060-07-A | 1 | 1 | Brake Head Machined | | |
| | | 3 ft.lb. | 79060-07-B | 1 | 4 | Brake Cover Assembly | | |
| | | 275/550V 60HZ | 79137-18-G | 1 | 5 | 1/4-20 X 1-1/2" Hex Cap Screw | | |
| | | 230/460V 60HZ | 79137-18-J | 1 | 6 | 1/4" Split Lock Washer | | |
| | | 115/230V 60HZ | 79137-18-K | 1 | 7 | 1/4-20 Hex Nut | | |
| | | 200/400V 60HZ | 79137-18-L | 1 | 8 | 3/8-16 X 2-1/4" Socket Cap Screw | | |
| 3 | Coil and Pole Assembly | 208/416V 50HZ | 79137-18-M | 1 | 9 | 3/8" Hi-Collar Lock Washer | | |
| | | 115/230V 50HZ | 79137-18-N | 1 | 10 | 1/4-20 X 3/8 Slotted Round Head Screw | | |
| | | 230/460V 50HZ | 79137-18-P | 1 | 11 | Anti Rattle Spacer | | |
| | | 21 | Brake Disc (Individual) | 327213 | 1 | 12 | Lead Clip | |
| | | 21,22 | Disc Plate Kit | 3 & 6 ft.lb. (1 disc) | 327212-1 | 1 | 13 | Window Cover Plate |
| | | 23,24 | (Includes Disc & Pressure Plates) | 10 ft.lb. (2 discs) | 327212-2 | 1 | 15 | 6-32 X 1/4" Hex Washer Head Screw |
| | | | | 16 | 1/2" Plug Button | | | |
| | | | | 19 | 3/16" SQR X 2-3/4" Key | | | |
| | | | | 20 | 3/16" SQR X 1-1/4" Key | | | |
| | | | | 25 | Insulating Sleeve | | | |
| | | | | 26 | Name Plate | | | |
| | | | | 27 | Instruction Label - Gap | | | |
| | | | | 28 | Instruction Label - Wire | | | |

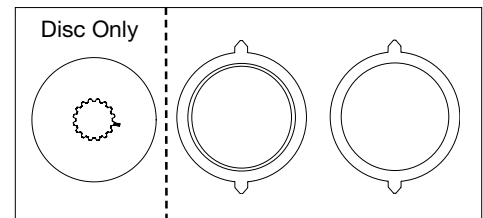
Item 2



Item 3

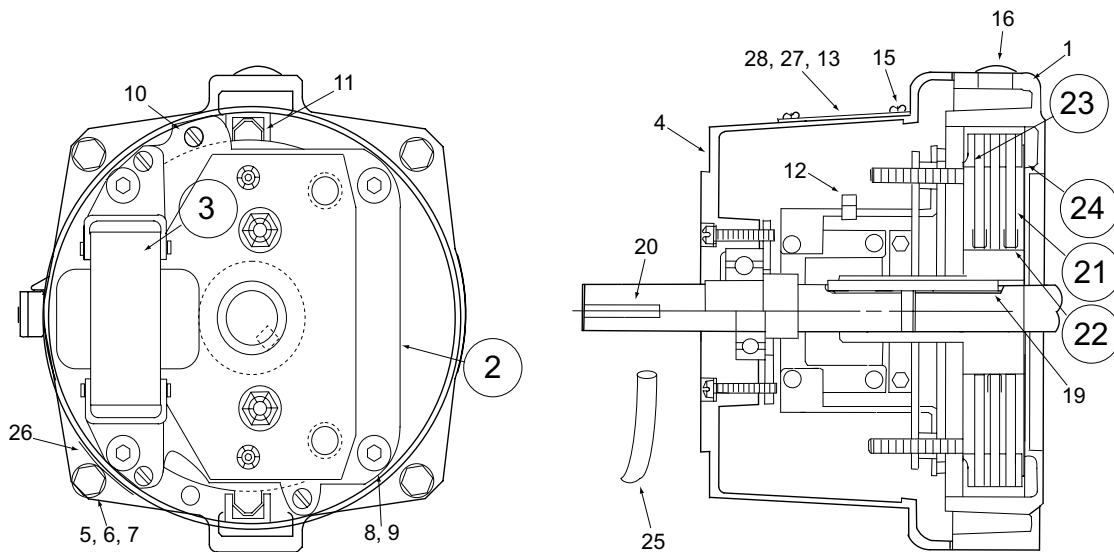


Disc Plate Kit Items 13-14-15-16



Service Parts

M-Series DC Coupler Brakes

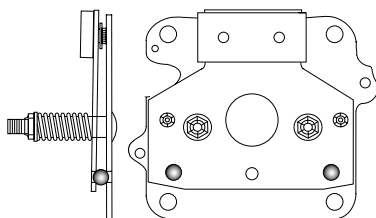


Component Parts

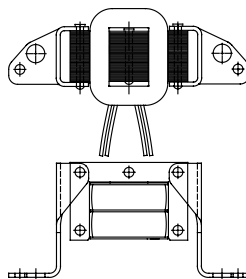
| Item | Description | Part No. | Qty. |
|-------|-----------------------------------|------------|------|
| 2 | Support & Armature Plate Assembly | 79060-07-A | 1 |
| 3 | Coil and Pole Assembly | 327208 | 1 |
| 21 | Brake Disc (Individual) | 327213 | 1 |
| 21,22 | Disc Plate Kit | 327212-1 | 1 |
| 23,24 | (Includes Disc & Pressure Plates) | 327212-2 | 1 |
| | | 327212-3 | 1 |

| Item | Description |
|------|---------------------------------------|
| 1 | Brake Head Machined |
| 4 | Brake Cover Assembly |
| 5 | 1/4-20 X 1-1/2" Hex Cap Screw |
| 6 | 1/4" Split Lock Washer |
| 7 | 1/4-20 Hex Nut |
| 8 | 3/8-16 X 2-1/4" Socket Cap Screw |
| 9 | 3/8" Hi-Collar Lock Washer |
| 10 | 1/4-20 X 3/8 Slotted Round Head Screw |
| 11 | Anti Rattle Spacer |
| 12 | Lead Clip |
| 13 | Window Cover Plate |
| 15 | 6-32 X 1/4" Hex Washer Head Screw |
| 16 | 1/2" Plug Button |
| 19 | 3/16" SQR X 2-3/4" Key |
| 20 | 3/16" SQR X 1-1/4" Key |
| 25 | Insulating Sleeve |
| 26 | Name Plate |
| 27 | Instruction Label - Gap |
| 28 | Instruction Label - Wire |

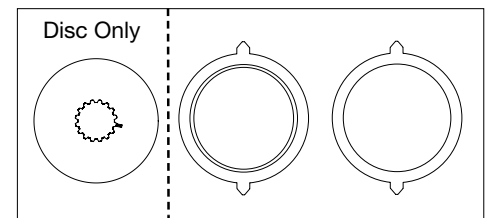
Item 2



Item 3



Disc Plate Kit Items 13-14-15-16



Service Parts

General Engineering Data



G

Mechanical Data Application Engineering

- Ordering Information / Standard NEMA Frame Dimensions..... G-3**
- Mechanical Data / Dynamic Torque G-4**
- Mechanical Data / Rotational Speed..... G-6**
- Mechanical Data / Clutch Field Restraining Devices..... G-7**
- Electrical Data / Coil Ratings G-8**
- Electrical Data / Installation Procedure G-11**
- Electrical Data / Coil Suppression & Clutch/Brake Overlap G-12**
- Electrical Data / Overexcitation G-13**