



## ERX Brakes For Industrial Applications



## SPRING-OPERATED ELECTRICALLY RELEASED ERX BRAKES

The ERX Brake range is a pre-assembled failsafe Electromagnetic brake which is used for parking and emergency braking.

The ERX Brake can be adapted to different application needs in speed, energy or torque, thanks to 3 different friction materials.

Beside the braking main function, the ERX Brake can be chosen with multiple options such as hand-lever release, enclosure protection, detection & redundancy or a combination of those.

Standard detection option, previously mechanical contact technology, is now contactless thanks to the new Warner Electric Sensor "WES".

### Features

- Compact design with torque from 5 to 75 Nm
- Single or Double brake version
- Very easy installation
- Single voltage as standard
- For dry use
- Duty cycle : 100% energized
- Indoor application
- IP54 Option
- Non-Stick friction material



## AVAILABLE OPTIONS

### Hand-Lever

For manual releasing



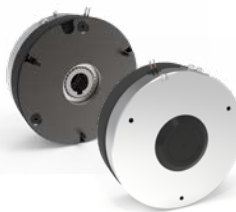
### "WES"

For monitoring of brake state



### Protection Kit

To prevent dust pollution



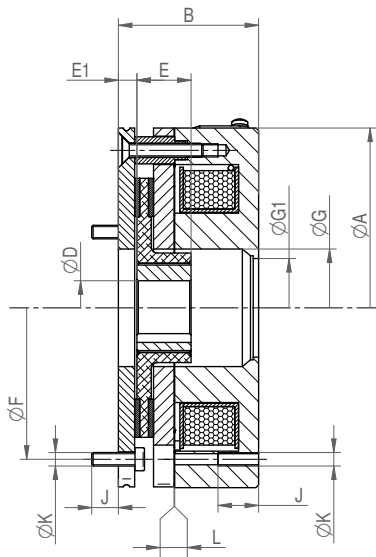
### Double brake

For application where redundancy is required



### Silent Option For quiet use

## OVERALL DIMENSIONS



Brake	ØA [mm]	B [mm]	ØD H7 [mm]	E [mm]	E1 [mm]	ØF [mm]
ERX 05	86	53	10	18	5	72
ERX 10	98	54	12 / 15	20	6	90
ERX 20	133	52	15 / 20	20	7	112
ERX 35	153	52	20 / 25	25	7	132
ERX 60	164	60	25 / 30	30	4	145
Brake	ØG [mm]	ØG1 [mm]	J [mm]	K [mm]	L ±0.1 [mm]	L Max. [mm]
ERX 05	26	25.5	10	3xM4	0.35	0.5
ERX 10	31	30.5	10	3xM5	0.35	0.5
ERX 20	43.5	36.5	10	3xM5*	0.35	0.5
ERX 35	51	50.5	10	3xM6	0.35	0.5
ERX 60	59	52	14	3xM8	0.35	0.5

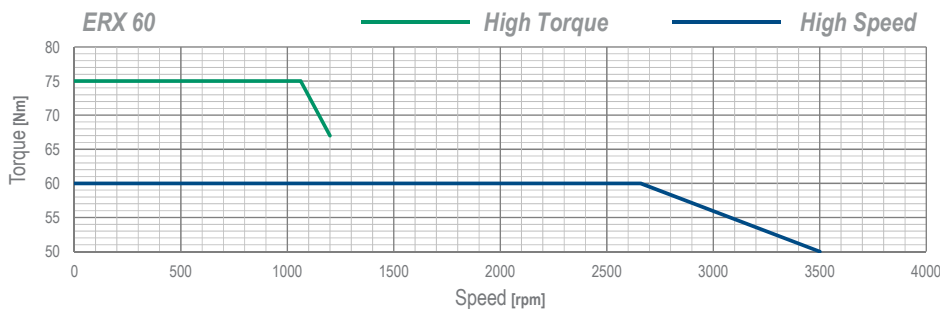
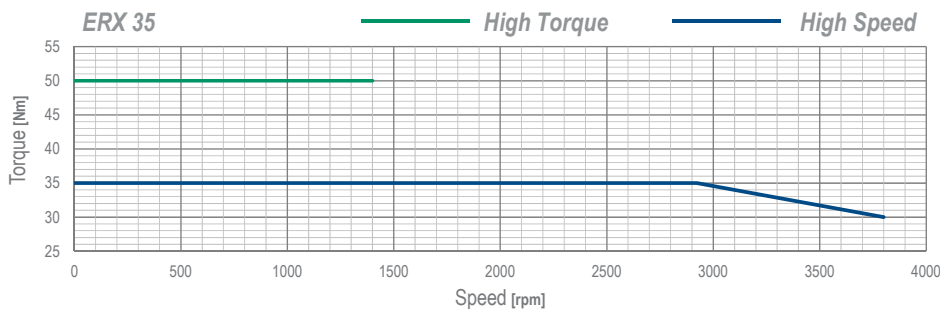
\*3xM6 on single brake version available on demand

## FRICION OPTIONS

Brake	Standard		High Torque		High Speed	
	Nominal Torque	Max. Speed allowed	Nominal Torque	Max. Speed allowed	Nominal Torque	Max. Speed allowed
	[Nm]	[rpm]	[Nm]	[rpm]	[Nm]	[rpm]
ERX 05	5	5000	7.5	2500	5	7000
ERX 10	10	3500	15	2000	10	5500
ERX 20	20	3000	30	1700	20	4600
ERX 35	35	2500	50	1400	35	3800
ERX 60	60	2000	75	1200	60	3500

## TORQUE VS. SPEED

For the standard version, the nominal torque is available on the full speed spectrum.  
 For Size 05, 10 & 20 High torque and High speed versions, the nominal torque is available on the full speed spectrum.  
 For Size 35 & 60, please see below the torque level over speed.



## HOW TO ORDER WITH OUR CONFIGURATOR

ERX	-V	-F	-HB	-L	-P	-N	-D	-HS
<b>Brake Size</b>	<b>Voltage (VDC)</b>	<b>Friction</b>	<b>Hub Bore</b>	<b>Lever Option</b>	<b>Cover Option</b>	<b>Silent Option</b>	<b>Double Option</b>	<b>WES Option</b>
05 10 20 35 60	24 103 207	ST Standard HT High Torque HS High Speed	Specify Hub Bore Size in mm	0 No 1 Yes	0 No 1 Yes	0 No 1 Yes	0 No 1 Yes	0 No 1 NC option 2 NO/NC option 3 NC + Wear option

### EXAMPLE:

#### ERX05-V024-FST-HB10-L1-P0-N0-D0-HS1

Brake Size 05, Voltage 24V with standard friction material, Hub bore diameter 10 with lever option and WES detection



Refer to our WES technical datasheet to define your required version

## Warner Electric Facilities

### North America

#### USA

31 Industrial Park Road  
New Hartford, CT 06057 - USA  
860-379-1252

*Electromagnetic Clutches  
and Brakes*

449 Gardner Street  
South Beloit, IL 61080 - USA  
815-389-3771

4578 East Park 30 Drive  
Columbia City, IN 46725 - USA  
260-244-6183

*Precision Electric Coils and  
Electromagnetic Clutches and  
Brakes*

#### Customer Service

1-800-825-6544

#### Application Support

1-800-825-9050

### Europe

#### France

7, rue Champfleur, B.P. 20095  
St Barthelemy d'Anjou - France  
+33 (0)2 41 21 24 24

*Electromagnetic Clutches  
and Brakes*

#### Customer Service

+33 (0)2 41 21 24 76

#### Application Support

+33 (0) 2 41 21 24 24

### Asia Pacific

#### Australia

+61 2 9894 0133

#### China

+86 21 5169-9255

#### Hong Kong

+852 2615 9313

#### Singapore

+65 6487 4464

#### Taiwan

+886 2 2577 8156

#### Thailand

+66 2322 5527

## The Brands of Altra Motion

### Couplings

**Ameridrives**  
[www.ameridrives.com](http://www.ameridrives.com)

**Bibby Turboflex**  
[www.bibbyturboflex.com](http://www.bibbyturboflex.com)

**Guardian Couplings**  
[www.guardiancouplings.com](http://www.guardiancouplings.com)

**Huco**  
[www.huco.com](http://www.huco.com)

**Lamiflex Couplings**  
[www.lamiflexcouplings.com](http://www.lamiflexcouplings.com)

**Stromag**  
[www.stromag.com](http://www.stromag.com)

**TB Wood's**  
[www.tbwoods.com](http://www.tbwoods.com)

### Linear Systems

**Thomson**  
[www.thomsonlinear.com](http://www.thomsonlinear.com)

### Geared Cam Limit Switches

**Stromag**  
[www.stromag.com](http://www.stromag.com)

### Engineered Bearing Assemblies

**Kilian**  
[www.kilianbearings.com](http://www.kilianbearings.com)

### Electric Clutches & Brakes

**Matrix**  
[www.matrix-international.com](http://www.matrix-international.com)

**Stromag**  
[www.stromag.com](http://www.stromag.com)

**Warner Electric**  
[www.warnerelectric.com](http://www.warnerelectric.com)

**Deltran**  
[www.thomsonlinear.com](http://www.thomsonlinear.com)

### Belted Drives

**TB Wood's**  
[www.tbwoods.com](http://www.tbwoods.com)

### Heavy Duty Clutches & Brakes

**Twiflex**  
[www.twiflex.com](http://www.twiflex.com)

**Stromag**  
[www.stromag.com](http://www.stromag.com)

**Svendborg Brakes**  
[www.svendborg-brakes.com](http://www.svendborg-brakes.com)

**Wichita Clutch**  
[www.wichitaclutch.com](http://www.wichitaclutch.com)

### Gearing & Specialty Components

**Bauer Gear Motor**  
[www.bauergears.com](http://www.bauergears.com)

**Boston Gear**  
[www.bostongear.com](http://www.bostongear.com)

**Delevan**  
[www.delevan.com](http://www.delevan.com)

**Delroyd Worm Gear**  
[www.delroyd.com](http://www.delroyd.com)

**Nuttall Gear**  
[www.nuttallgear.com](http://www.nuttallgear.com)

### Engine Braking Systems

**Jacobs Vehicle Systems**  
[www.jacobsvehiclesystems.com](http://www.jacobsvehiclesystems.com)

### Precision Motors & Automation

**Kollmorgen**  
[www.kollmorgen.com](http://www.kollmorgen.com)

### Miniature Motors

**Portescap**  
[www.portescap.com](http://www.portescap.com)

### Overrunning Clutches

**Formsprag Clutch**  
[www.formsprag.com](http://www.formsprag.com)

**Marland Clutch**  
[www.marland.com](http://www.marland.com)

**Stieber**  
[www.stieberclutch.com](http://www.stieberclutch.com)

Neither the accuracy nor completeness of the information contained in this publication is guaranteed by the company and may be subject to change in its sole discretion. The operating and performance characteristics of these products may vary depending on the application, installation, operating conditions and environmental factors. The company's terms and conditions of sale can be viewed at <http://www.altramotion.com/terms-and-conditions/sales-terms-and-conditions>. These terms and conditions apply to any person who may buy, acquire or use a product referred to herein, including any person who buys from a licensed distributor of these branded products.

©2019 by Warner Electric LLC. All rights reserved. All trademarks in this publication are the sole and exclusive property of Warner Electric LLC or one of its affiliated companies.

