

I N T R O D U C I N G

# ERD/ERDD VAR03

Spring-Operated Brake /  
Electromagnetic Release

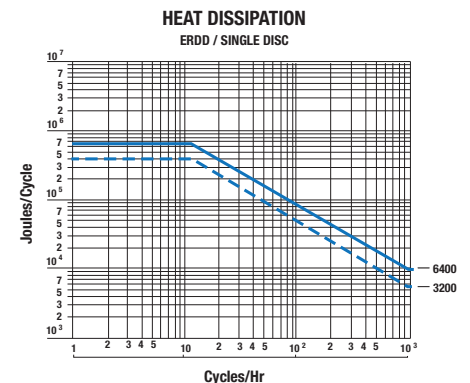
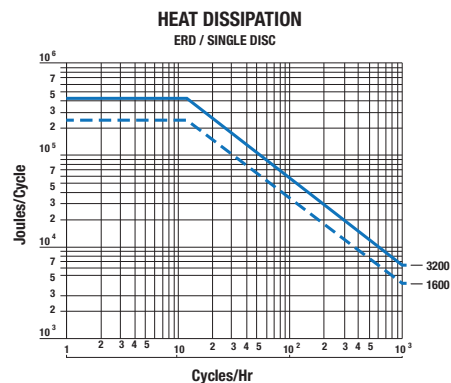


## ERD (Single Disc)

- Activated by spring pressure
- Electrically released under 103.5VDC
- Single disc
- For dry use only
- Duty cycle 100%ED
- No residual torque in disengaged position
- Horizontal or Vertical mount
- Low response time
- Encoder mounting holes
- Airgap should be adjusted at installation
- Wear compensation possible after dynamic use
- Mounting flange
- Torque adjustment
- Transport screws (to remove after installation)
- Power supply : CBC140-5
- Service manual : SM300

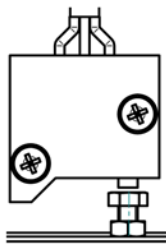
## ERDD (Dual Disc)

- Activated by spring pressure
- Electrically released under 103.5VDC
- Dual discs
- For dry use only
- Duty cycle 100%ED
- No residual torque in disengaged position
- Horizontal mount only
- Low response time
- Encoder mounting holes
- Airgap should be adjusted at installation
- Wear compensation possible after dynamic use
- mounting flange
- Torque adjustment
- Transport screws (to remove after installation)
- Power supply : CBC140-5
- Service manual : SM300





Microswitch Option:



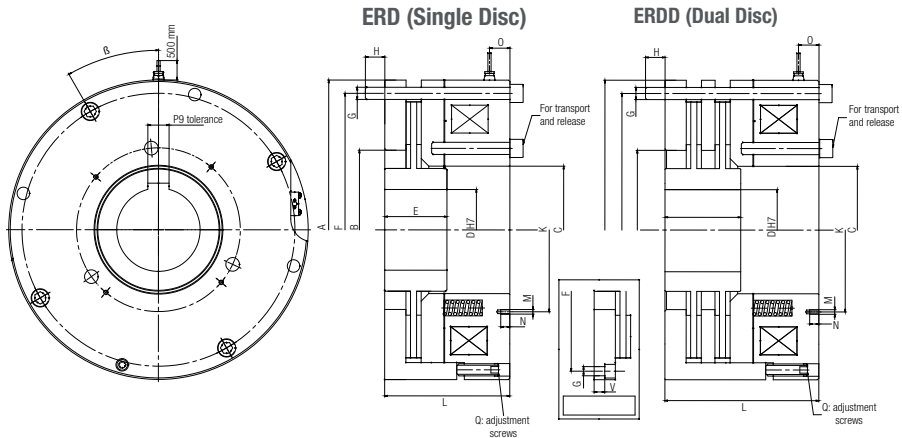
Standard Keyways according to  
DIN6885-1 / tolerance P9



Connector Option:

2 poles, capacity 0.5 to 2.5 mm<sup>2</sup>  
(delivered without cable)

## ERD / ERDD VAR03 Spring-Operated Brake / Electromagnetic Release



	Single Disc Horizontal or Vertical Axis		Dual Disc Horizontal Axis Only	
	1600	3200	3200	6400
Size	1600	3200	3200	6400
Nominal Torque (Nm)	1600	3200	3200	6400
Max Speed (rpm)	2300	1800	2300	1800
Voltage (VDC)	103.5	103.5	103.5	103.5
Power (Watt)	327	408	327	408
A (mm)	395	500	395	500
B (mm)	210	260	210	260
C (mm)	168	210	168	210
D pre-bored (mm)	50	60	50	60
D max (mm)	110	125	110	125
E (mm)	100	125	100	125
F (mm)	360	455	360	455
G (mm)	4 x M16	8 x M20	4 x M16	8 x M20
H min	30	40	30	40
K (mm)	216	250	216	250
L (mm)	165	205	203	268
M (mm)	4 x M6	4 x M6	4 x M6	4 x M6
N (mm)	12	12	12	12
O (mm)	27	36	27	36
Q (mm)	4 x M16	4 x M20	4 x M16	4 x M20
V (mm)	-	40	-	40
Beta (°)	60°	22°30'	60°	22°30'
Inertia (Kg•m <sup>2</sup> )	0.0997	0.513	0.125	0.954
Weight (Kg)	120	229	133	292
<b>Devices / Options:</b>				
Dust Cover	Kit	Kit	Kit	Kit
Release Detection	Kit	Kit	Kit	Kit
Connector	Kit	Kit	Kit	Kit

Options delivered as a kit, are available on request and can be added by customer.

[www.warnerelectric.com](http://www.warnerelectric.com)

449 Gardner Street  
South Beloit, IL - USA  
815-389-3771  
Fax: 815-389-2582

7, rue Champfleury, B.P. 20095  
St Barthelemy d'Anjou - France  
+33 (0)2 41 21 24 24  
Fax: +44 (0)2 41 21 24 70

