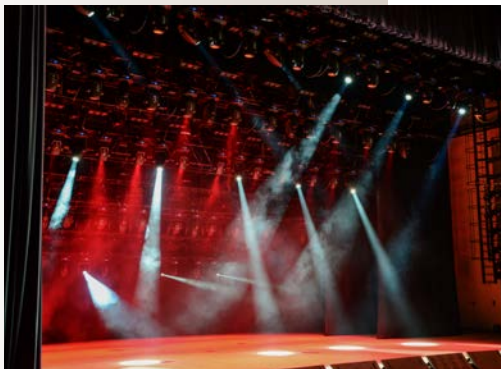
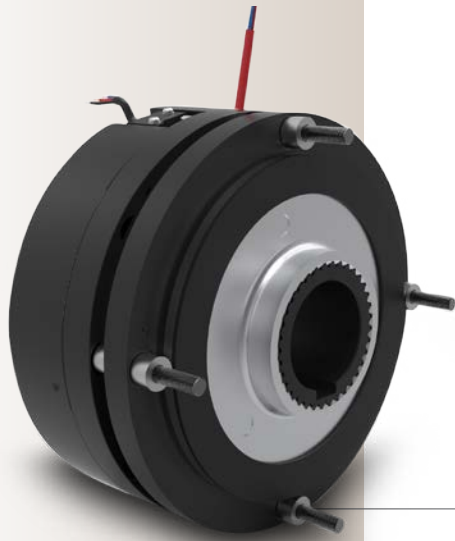


I N T R O D U C I N G

# The FENIX10 Brake

Electrically Released Brake  
for Stage & Theater Applications



Using friction material specifically developed for this application the FENIX 10 brake and its two friction discs provide a high torque level in limited space.

The list of options available and the possibility of customization guarantee the perfect fit of our brake in your installation.

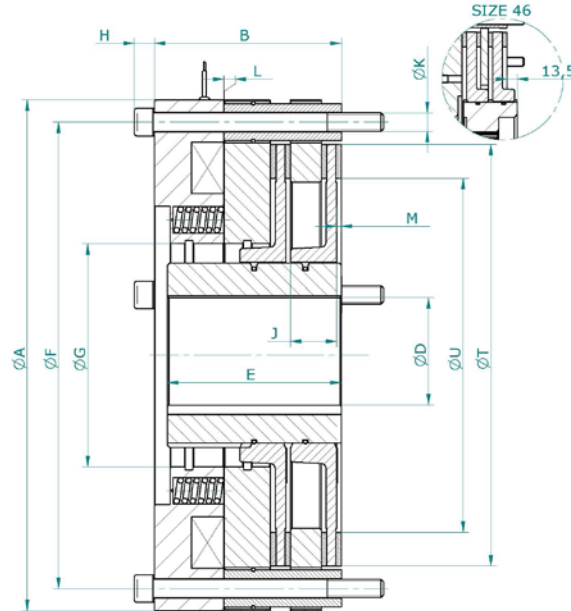
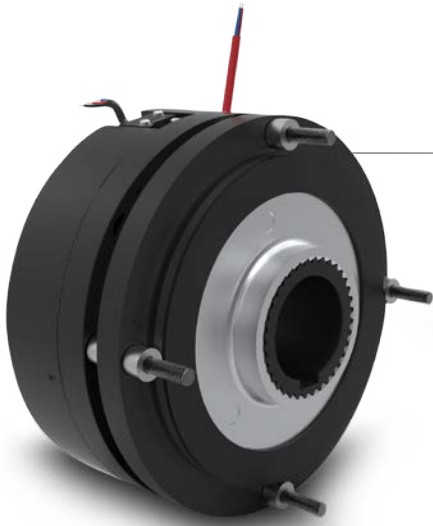
## Features

- Compact design with torque from 200Nm up to 5000Nm
- Single magnet and two friction disc
- Low noise level through the life of the brake (<45dB(A) out of box)
- Speeds up to 3500rpm
- Equipped with micro switch or proximity sensor
- Nearly maintenance free (further information in our service manual)
- Overexcitation (dual voltage) or single voltage
- Customization on request
- According to Norm Requirements (BGV-C1; DIN 56950-1; EN81-20/50, DGUV §17...)

Several options available such as hand release, dust cover, connectors, ...

## FENIX10 Motor Brake

# Electrically Released Brake



Size			02	04	06	12	20	30	46
<b>Static Torque Winch Brake</b>		<b>Nm</b>	200	400	600	1200	2000	3000	4600
<b>Other Available Torque</b>	<b>Min.</b>	<b>Nm</b>	150	300	500	1000	1800	3000	4000
	<b>Max.</b>	<b>Nm</b>	300	500	900	1600	2600	4000	5000
<b>Cert. Max. Speed</b>		<b>m/s</b>	7	7	7.1	6.8	6.5	6	6
<b>Cert. Max. Speed</b>		<b>rpm</b>	1200	1000	800	600	500	400	350
<b>High Energy/Speed Torque Motor Brake</b>		<b>Nm</b>	140	280	430	850	1400	2100	3300
<b>Other Available Torque</b>	<b>Min.</b>	<b>Nm</b>	100	210	350	700	1200	2100	2800
	<b>Max.</b>	<b>Nm</b>	210	350	600	1100	1800	2800	3500
<b>Cert. Max. Speed</b>		<b>m/s</b>	20	20	20	20	20	20	20
<b>Cert. Max. Speed</b>		<b>rpm</b>	3500	2800	2200	1900	1500	1400	1200
<b>A</b>	<b>mm</b>		165	194	234	274	332	352	395
<b>B</b>	<b>mm</b>		98	103	109	124	121	151	170.5
<b>D Standard H7</b>	<b>mm</b>	Can vary depending on customer specifications.							
<b>E</b>	<b>mm</b>								
<b>F</b>	<b>mm</b>		145	170	214	250	303	320	358
<b>G</b>	<b>mm</b>		59	70	80	98	145	145	165
<b>H</b>	<b>mm</b>		9.4	9.4	9.4	11.6	13.1	13.1	17.3
<b>J</b>	<b>mm</b>		13	13	13	30	30	30	28.5
<b>K</b>	<b>-</b>		3xM8	3xM8	6xM8	4xM10	4xM12	6xM12	4xM16
<b>L Nominal</b>	<b>mm</b>		0.4	0.4	0.4	0.4	0.4	0.5	0.5
<b>T</b>	<b>mm</b>		125	150	193	225	275	290	325
<b>U</b>	<b>mm</b>		90	116	145	175	230	250	280
<b>Hand Release</b>	<b>-</b>		Option						
<b>Weight</b>	<b>Kg</b>		12	16.5	26	40	52	86	110