

Conduit Box Kit No. 5200-101-010

P-1391
819-0198

Installation Instructions



 **Warner**[®]
Electric

An Altra Industrial Motion Company

Introduction

Conduit box kit No. 5200-101-010 contains all components needed to assemble a conduit box for 375, 400, 475, 500, 650, ER-825, and ER-1225 clutches and brakes.

When properly installed, this conduit box is designed to provide a proper means for field wiring terminations. It conforms to the requirements of Underwriters Laboratories.

CAUTION Do not connect rigid conduit directly to the conduit box. A minimum of 12" of flexible liquid tight conduit or other suitable flexible wiring with appropriate fittings is required. Flexible wiring is required to prevent side loading of bearing on bearing mounted clutches and possible deformation or breakage of the conduit box or clutch/brake components during assembly.

Step 1

Assemble a customer supplied flexible wiring connector into desired end of conduit box (3). Press protective plug (5) into unused conduit hole.

Thread green washer head hex screw (9) into round hole in base of conduit box. Place terminal ring (9-1) over screw before inserting.

Snap two wire grommets (6) into square holes in conduit box base. The grommet crowns should be toward the outside of the box and the rubber flanges should be on both sides of the conduit box.

Push two terminal spacers (7) through rubber grommets. Number 6 spacers fit in sizes 375, 400, and 475. Sizes 500 to 1225 use number 8 spacers. (See Figure 1)

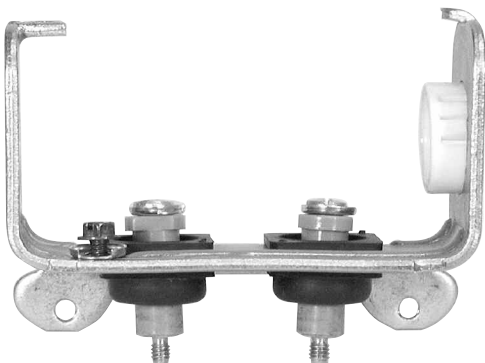
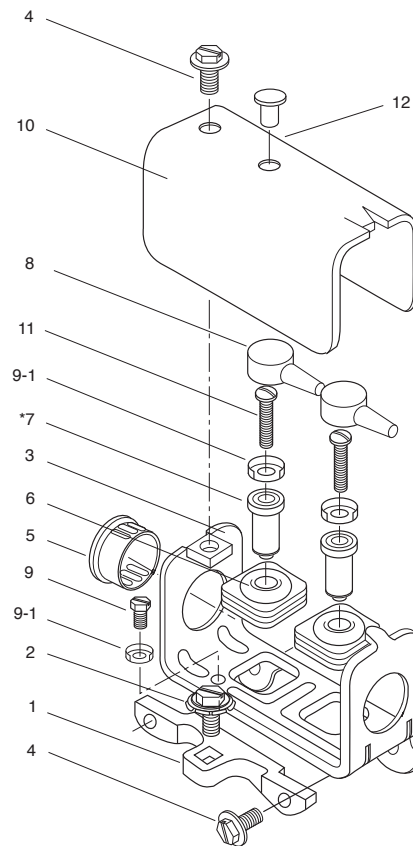


Figure 1

Components



Parts List for kit 5200-101-010

Item	Quantity	Part Name
1	1	Bracket
2	1	Screw, Hex, Washer Head and Sems Conical Washer
3	1	Box, Conduit
4	3	Screw, Hex, Washer Head
5	1	Plug, Protective
6	2	Grommet, Wire
*7	2	Spacer No. 8 Thd.
	2	Spacer No. 6 Thd.
8	2	Cap terminal
9	1	Screw, Hex, Washer Head, Green
9-1	3	Terminal, Ring
10	1	Cover
11	2	Screw, No. 8 Brass
12	1	Plug, Protective

*The No. 6 spacers are required on Sizes 375, 400 and 475. All others use No. 8.

WARNING Failure to follow these instructions may result in product damage, equipment damage, and serious or fatal injury to personnel.

Step 2

Fasten bracket (1) to clutch field/brake magnet with one No. 10-32 hex washer head screw (2). The screw is self-tapping, threads are not provided in the magnet bracket adapter. The square projection on the magnet fits into the square hole in the bracket. The curved side of the bracket mounts toward the magnet. The bracket flange is toward the flange side of the magnet. (See Figure 2)



Figure 2

Step 3

Mount conduit box to bracket. The conduit box flange must be toward flange side or the magnet (rear of bracket). Thread terminal spacers into field/magnet before fastening conduit box to bracket. Do not over tighten, excessive torque will pull thread insert out of magnet/field. Secure conduit box to bracket with two No. 10-32 hex washer head screws (4). (See Figure 3)

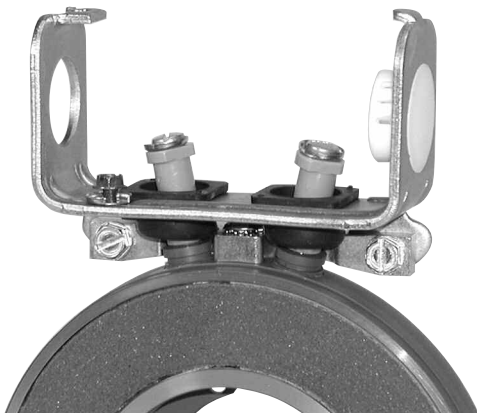


Figure 3

Step 4

Connect electric supply cable to the fitting installed on the conduit box. If an external power supply is furnishing DC current to the clutch or brake, proceed to Step 5 and skip Step 6. If a Warner Electric CBC-100 power supply is being installed in the conduit box, skip Step 5 and proceed to Step 6.

Step 5 - DC Connection

Slide one terminal cap (8) onto each of the two supply conductors, small end first. Connect the two supply conductors (with rubber caps) to the magnet or field terminals using two No. 8 brass screws (11) and ring terminals (9-1). The stripped wires can wrap around the screw between the terminal ring and the screw head or other ring type terminals may be used. Electrical supply connections must confirm to local electrical codes. Install plug (12) into cover hole.

Step 6 - AC Connection

When a CBC-100 power supply is used, refer to installation sheet P-266 provided with the CBC-100, following instructions carefully. To mount the CBC-100 to the conduit box, place the control into the cover so the curved surfaces conform, line up the cover hole with the control mounting hole and fasten with screw provided in the mounting kit. Connections to the magnet or field terminals are as outlined in Step 5.

Step 7

A ground wire is recommended for grounding of the conduit box and brake magnet or clutch field. Connect this wire with the green ground screw (8) to the hole in the bottom of the box. Consult electrical local codes regarding grounding requirements.

Step 8

Install cover (10) by sliding the slot in the cover over the tab on one end of the conduit box and secure the cover on the opposite end with one No. 10-32 hex washer head screw (11).

Warranty

Warner Electric LLC warrants that it will repair or replace (whichever it deems advisable) any product manufactured and sold by it which proves to be defective in material or workmanship within a period of one (1) year from the date of original purchase for consumer, commercial or industrial use.

This warranty extends only to the original purchaser and is not transferable or assignable without Warner Electric LLC's prior consent.

Warranty service can be obtained in the U.S.A. by returning any defective product, transportation charges prepaid, to the appropriate Warner Electric LLC factory. Additional warranty information may be obtained by writing the Customer Satisfaction Department, Warner Electric LLC, 449 Gardner Street, South Beloit, Illinois 61080, or by calling 815-389-3771.

A purchase receipt or other proof of original purchase will be required before warranty service is rendered. If found defective under the terms of this warranty, repair or replacement will be made, without charge, together with a refund for transportation costs. If found not to be defective, you will be notified and, with your consent, the item will be repaired or replaced and returned to you at your expense.

This warranty covers normal use and does not cover damage or defect which results from alteration, accident, neglect, or improper installation, operation, or maintenance.

Some states do not allow limitation on how long an implied warranty lasts, so the above limitation may not apply to you.

Warner Electric LLC's obligation under this warranty is limited to the repair or replacement of the defective product and in no event shall Warner Electric LLC be liable for consequential, indirect, or incidental damages of any kind incurred by reason of the manufacture, sale or use of any defective product. Warner Electric LLC neither assumes nor authorizes any other person to give any other warranty or to assume any other obligation or liability on its behalf.

WITH RESPECT TO CONSUMER USE OF THE PRODUCT, ANY IMPLIED WARRANTIES WHICH THE CONSUMER MAY HAVE ARE LIMITED IN DURATION TO ONE YEAR FROM THE DATE OF ORIGINAL CONSUMER PURCHASE. WITH RESPECT TO COMMERCIAL AND INDUSTRIAL USES OF THE PRODUCT, THE FOREGOING WARRANTY IS IN LIEU OF AND EXCLUDES ALL OTHER WARRANTIES, WHETHER EXPRESSED OR IMPLIED BY OPERATION OF LAW OR OTHERWISE, INCLUDING, BUT NOT LIMITED TO, ANY IMPLIED WARRANTIES OF MERCHANTABILITY OR FITNESS.

Some states do not allow the exclusion or limitation of incidental or consequential damages, so the above limitation or exclusion may not apply to you. This warranty gives you specific legal rights and you may also have other rights which vary from state to state.

Changes in Dimensions and Specifications

All dimensions and specifications shown in Warner Electric catalogs are subject to change without notice. Weights do not include weight of boxing for shipment. Certified prints will be furnished without charge on request to Warner Electric.



Warner Electric LLC
31 Industrial Park Road • New Hartford, CT 06057
815-389-3771 • Fax: 815-389-2582
www.warnerelectric.com
An Altra Industrial Motion Company