

# Conduit Box Kit No. 5162-101-002

P-1402  
819-0321

## Installation & Operating Instructions



 **Warner**<sup>®</sup>  
Electric

An Altra Industrial Motion Company

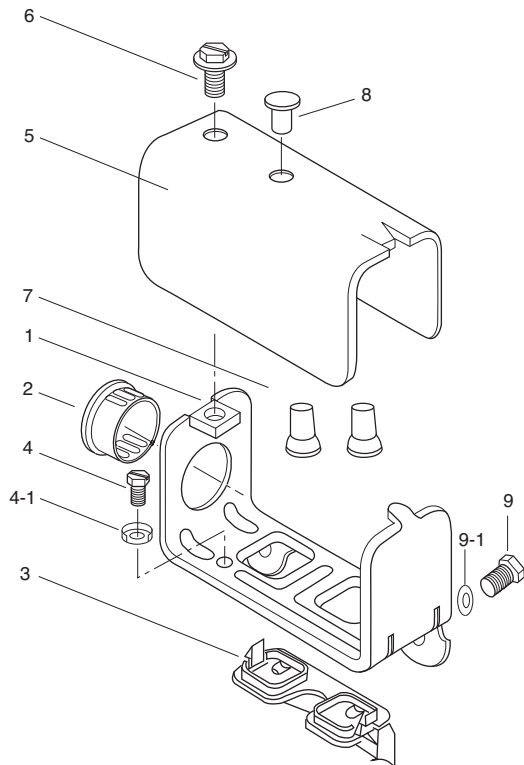
## Contents

Introduction. . . . .	2
Parts List. . . . .	2
Components. . . . .	3
Electrical Connections. . . . .	4
Warranty . . . . .	Back Page

**⚠ WARNING** Failure to follow these instructions may result in product damage, equipment damage, and serious or fatal injury to personnel.

**⚠ CAUTION** Do not connect rigid conduit directly to the conduit box. A minimum of 12” of flexible liquid tight conduit or other suitable flexible wiring with appropriate fittings is required. Flexible wiring is required to prevent side loading of bearing mounted clutches and possible deformation of the conduit box or components during assembly.

## Components



## Introduction

Conduit Box Kit No. 5162-101-102 contains all components needed to assemble a conduit box for Warner Electric AT clutches and brakes, sizes 25 through 115. Wiring terminations are provided. Consult local electrical codes for proper wiring terminations required.

## For AT Series Clutches and Brakes

This Warner Electric conduit box is designed to provide a proper means for field wiring termination and power entry into Warner Electric AT (Advanced Technology) series clutches and brakes. It conforms to the requirements of Underwriters Laboratories. Kit No. 5162-101-002, contains all components needed to assemble a conduit box for Warner Electric AT clutches and brakes, sizes 25 through 115. Please follow these instructions carefully when installing this conduit box.

## Parts List for kit 5162-101-002

Item	Quantity	Part Name
1	1	Box, Conduit
2	1	Plug, Protective
3	1	Retainer, Wire
4	1	Screw, Hex, Washer Head
4-1	1	Terminal Ring
5	1	Cover Assembly
6	1	Screw, Hex, Washer Head
7	2	Wire Nuts
8	1	Plug, Protective
9	2	Screw, Hex. Head
9-1	2	Washer, Lock

**Note:** Item 3 is supplied with the clutch or brake.

## Assembly and Installation

### Step 1

Assemble 1/2" flexible conduit fitting furnished by customers into the desired end of the conduit box (item 1). (See Figure 1).

Press protective plug (item 2) into the unused conduit hole in the box.



Figure 1

### Step 2

Insert the plastic wire retainer (item 3) into the conduit box with the two square flanges on the wire retainer protruding into the two square holes in the floor of the box. The wire inlet flange must be adjacent to the mounting holes of the conduit box. (See Figure 2). The two snap-in tabs on the wire retainer must be secure on the inside of the box.



Figure 2

### Step 3

Cut the two lead wires off so 8" of wire extends from the field or magnet. Insert the lead wires through the two holes in the wire retainer so they extend into the inside of the conduit box. (See Figure 3) Fasten the conduit box to the magnet or field. Tighten the hex head retaining screws (item 9) and lock washers (item 9-1).

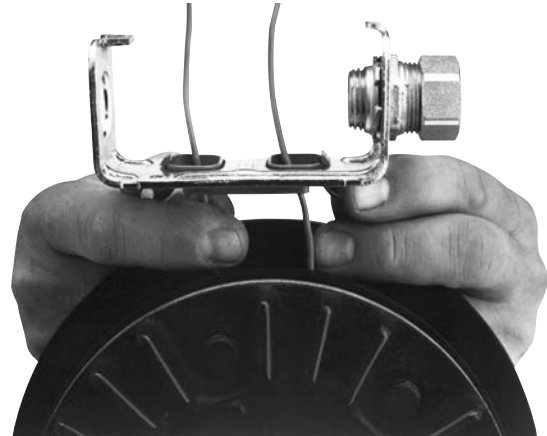


Figure 3

### Step 4

Connect electric supply cable to the flexible conduit fitting installed on the conduit box and tighten the hold-down nut.

**CAUTION** Rigid conduit must not be connected directly to the box. A minimum of 12" of flexible cable must be used. It is recommended that flexible "UL" approved liquid tight, metal or nonmetallic conduit be used with appropriate fittings. Flexible cable is required to prevent side loading of bearing on bearing mounted clutches and brakes and possible deformation of the conduit box or components during assembly.

### Step 5

If an external power supply is furnishing DC current to the clutch or brake, proceed to Step 5A and skip Step 5B. If a Warner Electric CBC-100 power supply is being installed in the conduit box cover, skip Step 5A and proceed to Step 5B.

### Step 5A

DC Connection. Connect the two supply wires to the two lead wires from the clutch field or brake magnet with the insulated wire nuts furnished (item 7) or other approved connectors. (See Figure 4) Connections must be made properly and insulated appropriately to meet local codes.



Figure 4

### Step 7

Install the cover (item 5) by sliding the slot in the cover over the tab on one end of the conduit box and secure the cover on the opposite end with the No. 10-32 hex washer head screw provided (item 6). See Figure 10. Press protective plug (item 8) into unused hole in cover if DC connection (step 6A) is used.

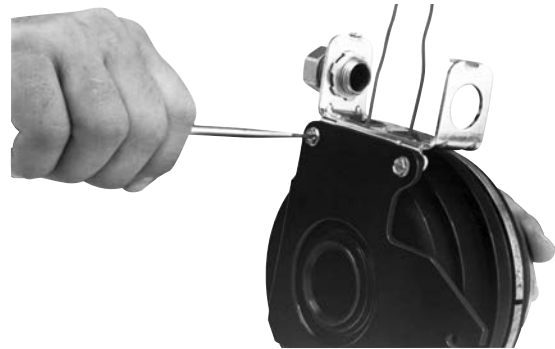


Figure 5

### Step 5B

AC Connection. If the two supply wires entering the conduit box are AC and the CBC-100 power supply is used, refer to installation sheet P-266 provided with the CBC-100, following instructions carefully. To mount the CBC-100 to the conduit box, place the control into the cover so the curved surfaces conform, line up the cover hole with the control mounting hole, and fasten with the screw provided in the control mounting kit. Proper connection of wires is important for proper service.

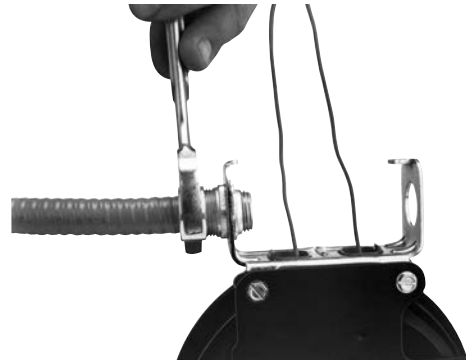


Figure 6

### Step 6

If the conduit assembled in Step 4 is nonmetallic, a third wire must be provided to the conduit box for grounding. Connect this wire with the green ground screw (item 4) and terminal ring (item 4-1) to the hole provided in the floor of the box. (See Figure 9.) Consult local codes regarding grounding requirements.

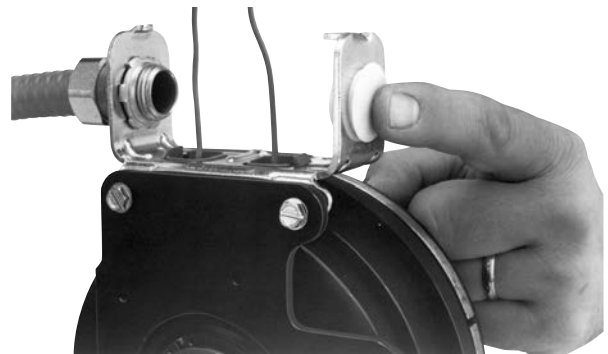


Figure 7



Figure 8

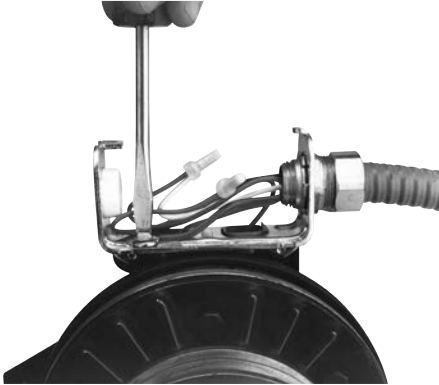


Figure 9



Figure 10

# Warranty

Warner Electric LLC warrants that it will repair or replace (whichever it deems advisable) any product manufactured and sold by it which proves to be defective in material or workmanship within a period of one (1) year from the date of original purchase for consumer, commercial or industrial use.

This warranty extends only to the original purchaser and is not transferable or assignable without Warner Electric LLC's prior consent.

Warranty service can be obtained in the U.S.A. by returning any defective product, transportation charges prepaid, to the appropriate Warner Electric LLC factory. Additional warranty information may be obtained by writing the Customer Satisfaction Department, Warner Electric LLC, 449 Gardner Street, South Beloit, Illinois 61080, or by calling 815-389-3771.

A purchase receipt or other proof of original purchase will be required before warranty service is rendered. If found defective under the terms of this warranty, repair or replacement will be made, without charge, together with a refund for transportation costs. If found not to be defective, you will be notified and, with your consent, the item will be repaired or replaced and returned to you at your expense.

This warranty covers normal use and does not cover damage or defect which results from alteration, accident, neglect, or improper installation, operation, or maintenance.

Some states do not allow limitation on how long an implied warranty lasts, so the above limitation may not apply to you.

Warner Electric LLC's obligation under this warranty is limited to the repair or replacement of the defective product and in no event shall Warner Electric LLC be liable for consequential, indirect, or incidental damages of any kind incurred by reason of the manufacture, sale or use of any defective product. Warner Electric LLC neither assumes nor authorizes any other person to give any other warranty or to assume any other obligation or liability on its behalf.

WITH RESPECT TO CONSUMER USE OF THE PRODUCT, ANY IMPLIED WARRANTIES WHICH THE CONSUMER MAY HAVE ARE LIMITED IN DURATION TO ONE YEAR FROM THE DATE OF ORIGINAL CONSUMER PURCHASE. WITH RESPECT TO COMMERCIAL AND INDUSTRIAL USES OF THE PRODUCT, THE FOREGOING WARRANTY IS IN LIEU OF AND EXCLUDES ALL OTHER WARRANTIES, WHETHER EXPRESSED OR IMPLIED BY OPERATION OF LAW OR OTHERWISE, INCLUDING, BUT NOT LIMITED TO, ANY IMPLIED WARRANTIES OF MERCHANTABILITY OR FITNESS.

Some states do not allow the exclusion or limitation of incidental or consequential damages, so the above limitation or exclusion may not apply to you. This warranty gives you specific legal rights and you may also have other rights which vary from state to state.

## **Changes in Dimensions and Specifications**

All dimensions and specifications shown in Warner Electric catalogs are subject to change without notice. Weights do not include weight of boxing for shipment. Certified prints will be furnished without charge on request to Warner Electric.



**Warner Electric**  
31 Industrial Park Road • New Hartford, CT 06057  
815-389-3771 • Fax: 815-389-2582  
[www.warnerelectric.com](http://www.warnerelectric.com)