

Dependable Torque Control Products

Wichita clutches and brakes provide the high speed acceleration and deceleration that are essential in modern process equipment. They are available in a variety of designs and mounting configurations and are used extensively around the world by leading OEM's in metalworking, steel, pulp/paper, material handling, paper converting, mining and energy.

Wichita provides custom designs to meet your particular application requirements, giving you the right solution to meet all your power transmission needs.

General Warnings



Do not repair clutches and brakes (with or without a guard) while they are rotating or with a load engaged.



Do not disassemble while air-tube is pressurized.



Heavy components should be handled carefully. If dropped they can cause serious bodily injury.



Caution, clutches and brakes generate heat. Allow cooling time before normal maintenance.



Do not exceed the recommended maximum air-pressure listed in the Specification Table for each type of unit.



Do not operate clutches and brakes without a guard.



Internal springs under compression. Please refer to installation and maintenance manuals for proper disassembly procedures.



Disable all power sources (electrical, pneumatic, mechanical, etc.) before servicing equipment.



Consult Wichita Installation and Maintenance manuals for proper disassembly and assembly procedures.

Wichita clutches and brakes are designed to be operated with original Wichita replacement parts. Using non-original replacement parts in Wichita clutches and/or brakes voids all warranties issued by Warner Electric LLC. Warner also specifically disclaims any responsibility for damage to persons or property which may be related to the use of said brakes and clutches which employ non-original parts.

Customer Service/Engineering	2
Parts and Service	4
Selection Guide	6
A Combination Clutch/Brakes	10
Applications	11
Size 380 thru 910	14
B Air Tube Disc Clutches and Brakes	22
Applications	22
Low Inertia & Very Low Inertia Clutches & Brakes	24
High Torque Clutches	44
Spring-Set Air Release Brakes	58
C Tension Brakes	70
AquaMaKKs Clutches and Brakes	70
Kopper Kool Brakes	75
Mistral II Brakes	102
ModEvo Tension Brakes	106
D Spring-Set Motor Brakes	114
Specifications	115
C-Face Motor Brakes	117
Foot Mounted Motor Brakes	118
E Standard Vent Clutches	122
Applications	123
Coupling Clutches	131
Grinding Mill Clutches	136
F Power Take-Off Clutches	145
Mechanical In-Line PTO	147
Mechanical Side Load PTO	148
Air-Tube Disc Power Take-Off Clutches	151
G Mesur-Fil Fluid Couplings	154
Applications	155
Sizes and Mountings	158
Quick Selection Chart	160
Slip Curves	162
Mesur-Fil Modular Concept Sizes 7.0, 9.4, 12.4	166
Model HC	168
Model HBM	169
Model HCM	170
Model HSD	172
Engineering Data	174
Glossary of Terms	177



Customer Service



For over 60 years Wichita Clutch has provided engineered solutions to the most demanding torque control problems.

Founded in 1947, Wichita Clutch began manufacturing air-tube disc clutches and brakes. Today, we are recognized as a global leader in heavy-duty power transmission.

Total Support

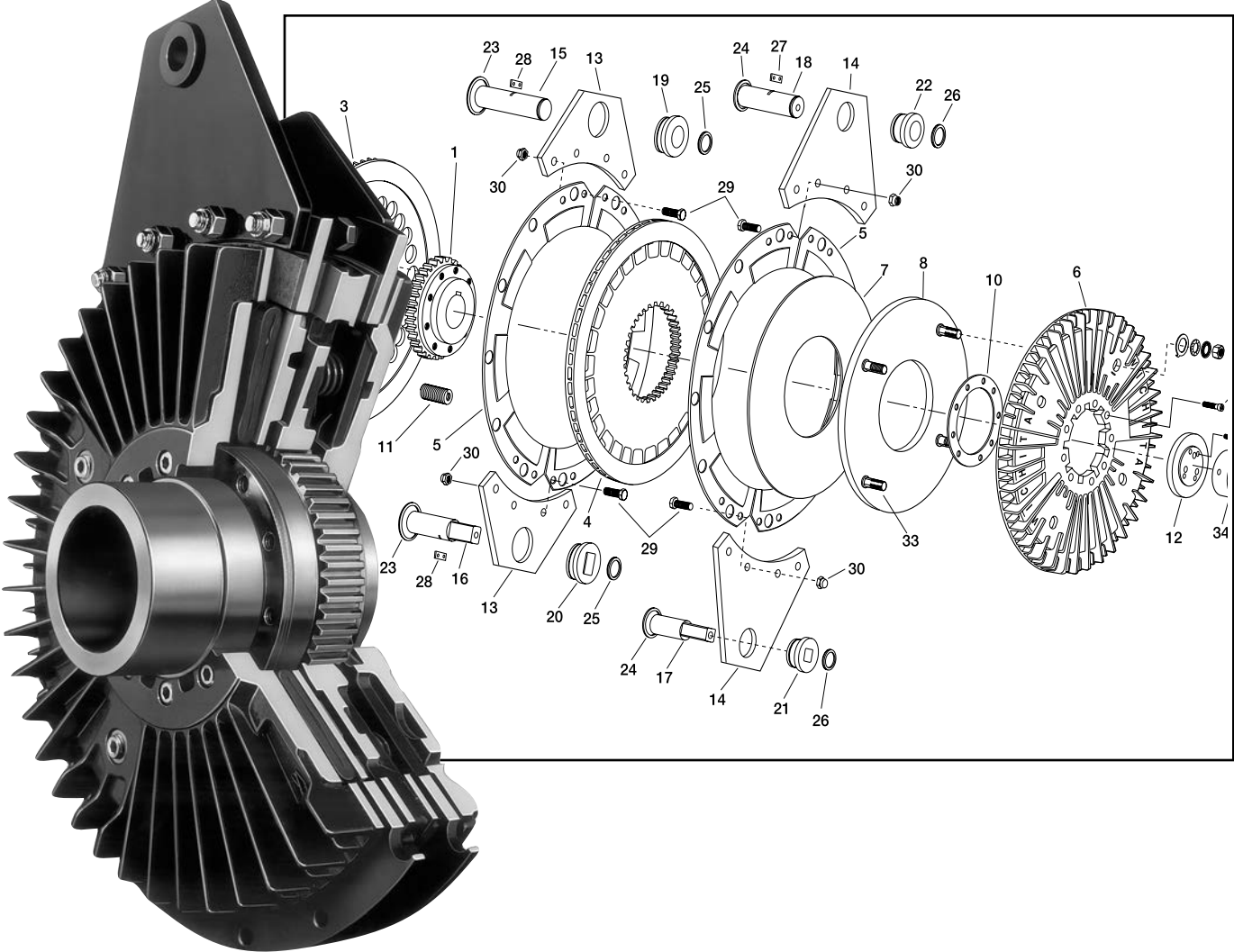
Superior customer service is a common denominator at Wichita Clutch. It is this philosophy that places the needs of our customers at the central focus of our efforts. By implementing Cellular Manufacturing, Kan-Ban and Just-In-Time scheduling, our customers receive the products they require precisely when needed. And our computerized order entry systems allow quick and timely answers to your questions. A national distributor network puts local Wichita specialists only a phone call away.

Assured quality

Wichita Clutch has instituted quality assurance procedures aimed at achieving the ultimate in product reliability. We employ sophisticated Statistical Process Control (SPC) programs to ensure product consistency. Working within our cellular manufacturing structure, every worker is responsible for maintaining unvarying product quality. Our conformity to specifications is your performance guarantee.



*Wichita Clutch Plant
Wichita Falls, Texas*



Engineering

Wichita has dedicated significant resources and talented people to the numerous engineering disciplines required to design, manufacture and apply our heavy duty clutches and brakes. Our application engineers provide timely response to your inquiries with our Computer Aided Product Selection (CAPS) system.

Our product engineers utilize the latest 3-Dimensional CAD equipment in the design of new products. Our dedication to emerging technologies has allowed us to solve the most challenging applications in heavy-duty power transmission.

The simple air-tube disc clutch design allows for greater torque capacity in multiple plate units at less pressure than drum clutch designs. Years of engineering development have produced a variety of designs used extensively by leading OEM's in all major heavy duty applications.

