



Mistral Pneumatic Brakes



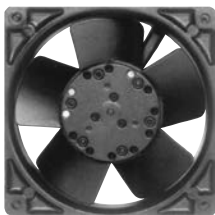


MISTRAL PNEUMATIC BRAKES

Mistral comes from the stable of one of the world's foremost innovators of pneumatic operated tension brakes.

Wichita's design and research engineers have absorbed the needs of the corrugating and paper converting industry for an improved mill-roll-stand brake to suit current and future performance requirements. Many painstaking hours of design and consultation with the market have resulted in this compact high performance brake.

For modern corrugator and paper converting line speeds the Mistral brakes have the ideal parameters for existing and future machines. It paves the way to increase production output.



Integrated Cooling

A high performance, low energy cooling fan is housed within the brake to provide high heat dissipation - a must for higher productivity through controlled tension at high web speeds.

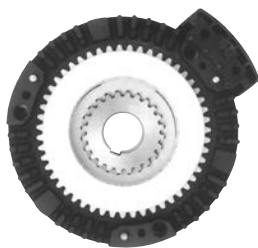
Fine Tuning

The brake may be fitted with a variable number of actuators, allowing precise selection of brake torque capacity for optimum tension control.



Front Cover Fixing

By removing just three cap screws, the front cover can be removed, allowing easy and fast access to the internal parts, which will also automatically disconnect the air and electricity supply.



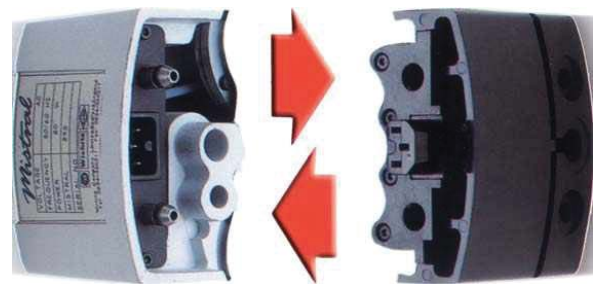
Brake Installation

A three bolt attachment is used to affix the brake to the arm of the mill-roll-stand and an optional spigot location makes installation, to both new and existing machines, a simple operation.

FEATURES

Safety

Mistral has integral guarding, eliminating the cost and effort of fitting extra guarding. Another safety feature is that the pneumatic and electrical supply is automatically disconnected when the front cover is removed.



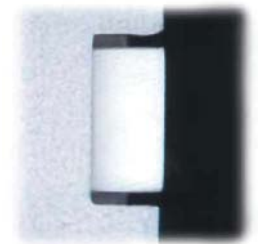
Neat and tidy air and electrical connections.

Compact Design

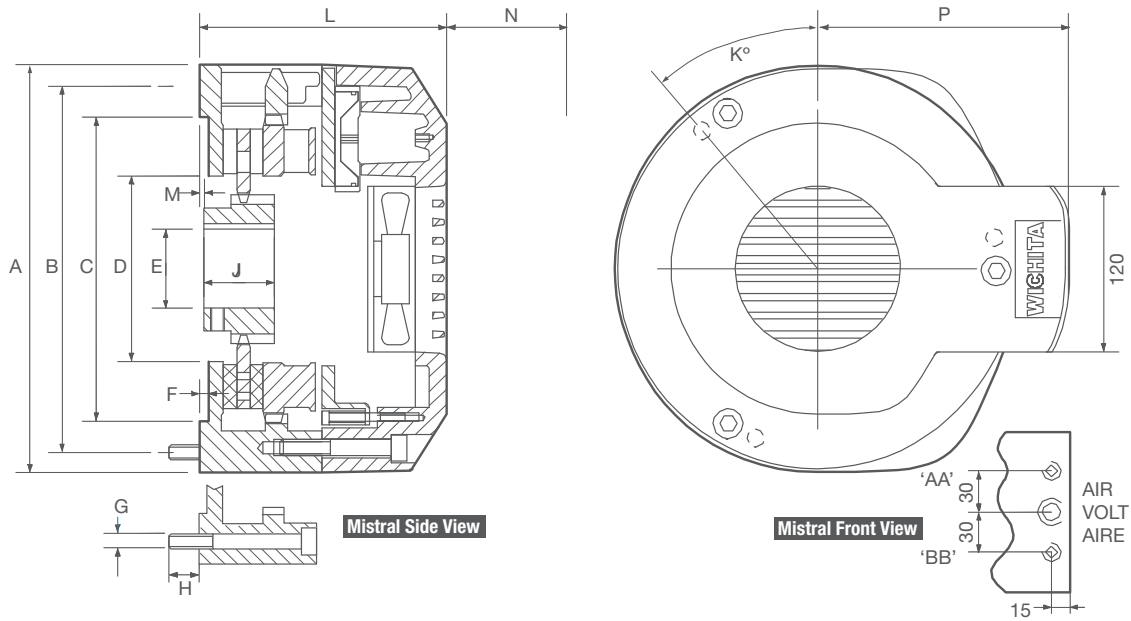
Because Mistral brakes are only 295 or 410 mm diameter, not only do they enhance the aesthetics of the mill-roll-stand, they also allow the operator to pick up small part reels used in short batch runs. For automatic reel loading machines the brakes offer the option of infrared and speed sensors fitted within the brake.

Wear Indicator

Fitted with a prominently positioned visual wear indicator, there is no need to lose valuable production time or even stop the machine to check the brake for wear.



Dimensions



Model(l)	A	B	C	D	E	F	G	H	J	K	L	M	N	P
200	295	260	220 H7	N/A	60	6	3xM12	25	50	40	178	0	70	182.5
280	410	355	N/A	175 H7	65	0	3xM16	30	60	20	192	9.5	80	240.5

Model	Fan Voltages	Fan Power	Electric	Pneum.
200	220VAC or/oder 110VAC or/oder 24VDC	20 W	M16 PG9 3/8 NPT	1/8 BSP 1/8 BSP 1/8 NPT
280	220VAC or/oder 110VAC or/oder 24VDC	25 W	M16 PG9 3/8 NPT	1/8 BSP 1/8 BSP 1/8 NPT

Actuator/Inlet	'AA'	'BB'
200/2	2	0
200/4	2	2
200/6	2	4
280/3	3	0
280/6	3	3
280/9	3	6

Performance

Model	Dynamic Slipping Torque Capacity			Heat Transfer Capacity			Max Speed	Inertia of Rotating Parts	Weight	
	Torque Universal Friction			No Fan	With Fan				Total Brake	Rotating Parts
	@ 0.2 bar*	@ 5.5 bar	@ 6 bar		Cont.	30 Min On/Off				
[Nm]	[Nm]	[Nm]	[kW]	[kW]	[kW]	[min ⁻¹]	[kgm ²]	[kg]	[kg]	
200/2 200/4 200/6	7 14 22	198 396 594	216 432 648	1.1	2.4	2.8	2860	0.032	35	4.5
280/3 280/6 280/9	15 29 44	402 803 1205	438 876 1315	1.4	4.8	5.2	2090	0.076	50	9.4

* Torque value at 0.2 bar is for full quantity of actuators. Torque at minimum quantity of actuators is shown in parenthesis

Torque at zero air pressure = zero Nm

Wichita Clutch Facilities

North America

USA

2800 Fisher Road
Wichita Falls, TX 76302 - USA
940-723-3400

*Pneumatic Clutches
and Brakes*

Europe

United Kingdom

Amphill Road
Bedford MK42 9RD - England
+44 (0) 1234 350311

*Pneumatic Clutches
and Brakes*

Asia Pacific

Australia

+61 2 9894 0133

China

+86 21 5169-9255

Hong Kong

+852 2615 9313

Singapore

+65 6487 4464

Taiwan

+886 2 2577 8156

Thailand

+66 2322 5527

The Brands of Altra Motion

Couplings

Ameridrives
www.ameridrives.com

Bibby Turboflex
www.bibbyturboflex.com

Guardian Couplings
www.guardiancouplings.com

Huco
www.huco.com

Lamiflex Couplings
www.lamiflexcouplings.com

Stromag
www.stromag.com

TB Wood's
www.tbwoods.com

Linear Systems

Thomson
www.thomsonlinear.com

Warner Linear
www.warnerlinear.com

Geared Cam Limit Switches

Stromag
www.stromag.com

Engineered Bearing Assemblies

Kilian
www.kilianbearings.com

Electric Clutches & Brakes

Matrix
www.matrix-international.com

Stromag
www.stromag.com

Warner Electric
www.warnerelectric.com

Deltran
www.thomsonlinear.com

Belted Drives

TB Wood's
www.tbwoods.com

Heavy Duty Clutches & Brakes

Twiflex
www.twiflex.com

Stromag
www.stromag.com

Svendborg Brakes
www.svendborg-brakes.com

Wichita Clutch
www.wichitaclutch.com

Gearing & Specialty Components

Bauer Gear Motor
www.bauergears.com

Boston Gear
www.bostongear.com

Delevan
www.delevan.com

Delroyd Worm Gear
www.delroyd.com

Nuttall Gear
www.nuttallgear.com

Engine Braking Systems

Jacobs Vehicle Systems
www.jacobsvehiclesystems.com

Precision Motors & Automation

Kollmorgen
www.kollmorgen.com

Miniature Motors

Portescap
www.portescap.com

Overrunning Clutches

Formsprag Clutch
www.formsprag.com

Marland Clutch
www.marland.com

Stieber
www.stieberclutch.com

Neither the accuracy nor completeness of the information contained in this publication is guaranteed by the company and may be subject to change in its sole discretion. The operating and performance characteristics of these products may vary depending on the application, installation, operating conditions and environmental factors. The company's terms and conditions of sale can be viewed at <http://www.altramotion.com/terms-and-conditions/sales-terms-and-conditions>. These terms and conditions apply to any person who may buy, acquire or use a product referred to herein, including any person who buys from a licensed distributor of these branded products.

©2019 by Wichita Clutch LLC. All rights reserved. All trademarks in this publication are the sole and exclusive property of Wichita Clutch LLC or one of its affiliated companies.