

Base Castings and MTO Sheaves

WOOD PELLET MILLS

PROBLEM

A major global manufacturer of biomass machinery and process plants, was looking for a more reliable foundry for base castings used on its wood pellet mills. The mills produce uniform wood pellets for use in biomass furnaces. Various machine components are installed and attached to the 5 ft. wide x 6 ft. high, 6,000 lb. gray iron base casting. The OEM's existing casting supplier was having issues with quality and delivery.

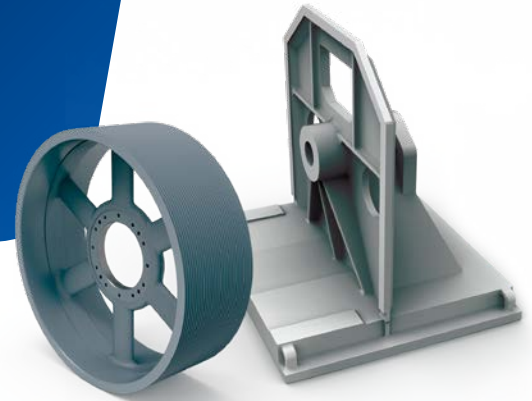
SOLUTION

TB Wood's (TBW) has been supplying the OEM with high-quality, Made-To-Order (MTO) 60 in. diameter, 30-groove gray iron sheaves for many years. The sheaves are a key component on the customer's belt-driven wood pellet mills.

Based on a history of high product quality and dependable service, the OEM contacted TBW for a competitive quote and ultimately awarded them the base casting business. In order to improve casting manufacturability, quality, and machinability, the TBW engineering team redesigned the molding method and suggested changes to where the casting is parted.

While working with the customer's engineers, TBW engineers explained the suggested changes and identified how they would affect the machining vendor. The change required new pattern equipment, but allowed TBW to improve molding safety and casting quality, while reducing pattern maintenance and machine stock on the casting.

TBW also worked with the machining vendor to identify areas of concern and help with casting lineup for machining. This allowed the machining vendor to reduce their price, which provided additional savings for the customer. The customer and their machining vendor are very pleased with the quality and timely delivery of the new TBW castings.



HIGHLIGHTS

- Made-To-Order (MTO) 60 in. diameter, 30-groove, class 35 gray iron sheaves
- 5 ft. wide x 6 ft. high, 6,000 lb., class 30 gray iron base castings
- Re-engineered, economical casting design saved manufacturing and machining costs

Regal Rexnord

Contact us: 1-888-449-9439

tbwoods.com | regalrexnord.com

The proper selection and application of products and components, including assuring that the product is safe for its intended use, are the responsibility of the customer. To view our Application Considerations, please visit <https://www.regalrexnord.com/Application-Considerations>.

To view our Standard Terms and Conditions of Sale, please visit <https://www.regalrexnord.com/Terms-and-Conditions-of-Sale>.

"Regal Rexnord" is not indicative of legal entity. Refer to product purchase documentation for the applicable legal entity. Regal Rexnord and TB Woods are trademarks of Regal Rexnord Corporation or one of its affiliated companies.

© 2019, 2025 Regal Rexnord Corporation, All Rights Reserved.
MCCSS-P-8593-TBW-EN-US 07/25



TB WOOD'S™