

Expanded Stainless Steel Offering **NEW**



New 2nd Generation Design for SS700

- Larger hollow bore options in smaller units provide reduced envelope, weight and cost.
- New features: field-detachable output flange; shaft covers; new shaft options (including a Tapered Bushing for keyless, full torque transmission)

New Sizes of SS2000R Series - Helical Bevel

- Compact 2033R frame size with full compliment of mounting options
- Rugged 2073R frame size has expanded torque capacity and hollow output shaft bore sizes up to 2.000 inches

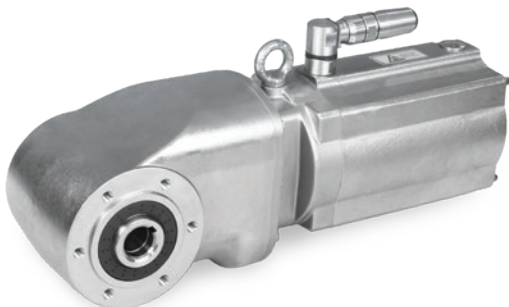


New Helical Multiplier

- C-Face mounts to any SS700, SS2000R or SS2000 product for more flexible ratio expansion
- Range of low ratios can be used as compact, stand-alone speed reducer for low reduction requirements

New AQT AquaTRUE™ Planetary Gearhead

- RediMount™ design for use with servo motors in precision applications
- 4 frame sizes with ratios from 3:1 thru 100:1



New SS Hiflex Helical Bevel Gear Motors

- 3 frame sizes with integrated motor options including asynchronous and permanent magnet
- Non-vented, totally-enclosed exterior with ability to integrate a brake or encoder

New SS AC Motor Design

- Welded and rounded conduit box for better sealing and washdown runoff
- Stainless slinger to protect shaft seal
- New size: 1/3 HP

