



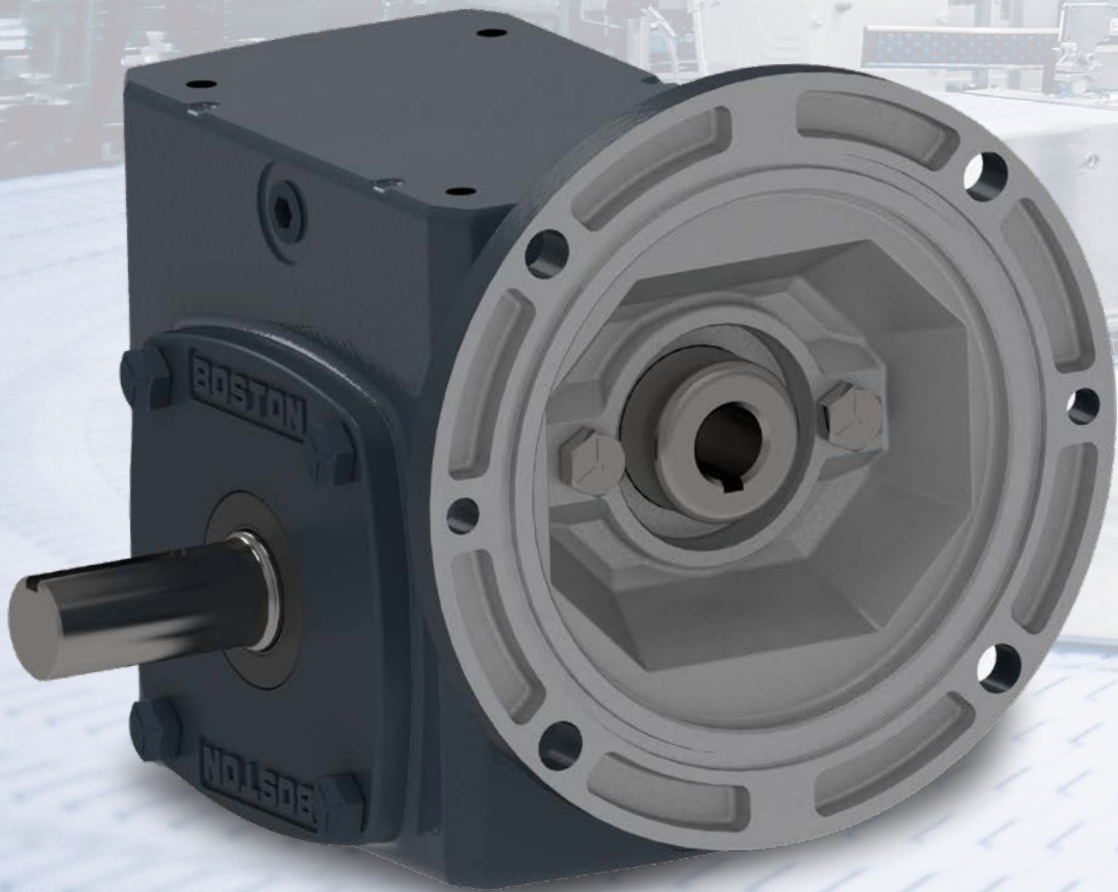
## **Boston Gear 7700 Series**

CAST IRON WORM GEARBOXES



***BOSTON GEAR™***

# BOST-STRONG: PROVEN TO PERFORM. BUILT TO ENDURE.



## Upgrade Without Compromise

The new 7700 series worm gear combines our legacy of engineering excellence with targeted performance upgrades. The 7700 series gearbox delivers more torque, advanced sealing technology, and increased load capacity.

Designed for enhanced durability and efficiency in demanding applications, our next generation worm-gear continues the tradition of proven performance.



# Seamless Replacement, Simplified Integration

The 7700 Series is backward compatible with our existing 700 Series worm gear platform and designed as a drop-in replacement for leading competitor models.

That means you get next-generation performance—without redesigning your system or reworking your installation. (Example: F721-30-B5-G is now F7721-30-B5-G)



## Engineered for Continuous — Use Durability

Improved torque and horsepower deliver a stronger gearbox—built to withstand high shock loads and continuous use, with up to 1.5X the lifespan of previous models.



## Optimized Torque

Up to 40% more torque and horsepower enables a smaller gearbox with a larger motor, while reducing maintenance and repair costs.



## Leak-Free Performance — Install in Any Position

Robust oil seal technology enables 100% position flexibility, reducing leaks, the risk of spills or contamination, and compliance issues.



## Maximized Seal Life — No Oil Leaks

Hardened and ground input seal journals extend seal life, delivering leak-free performance — minimizing maintenance and downtime.



## Increased Load Capacity for High-Tension Applications

Tapered roller bearings deliver an increased overhung load rating of 35% average—boosting durability in high-tension applications and cutting downtime, repairs, and replacement costs.

## 7700 SERIES SPECIFICATIONS

**Center Distance:** 7713 to 7732

**Ration:** 5:1 thru 3600:1

**Reductions:** Single or Double

**Output Torque:** Up to 20,000 lb-in

**Output Shaft:** Solid, Hollow, Double Projecting

**Lubricant:** Factory filled as ordered

**Available Versions:** Horizontal Base, Vertical Base (High/Low), Bost Mount Bracket, Hollow Output Flange

# INDUSTRY experts

You have challenges.  
**We have solutions.**

When you partner with Regal Rexnord, you get with a **trusted global company** with **local resources**, **reputable brands**, and a **proven history** of delivering cost-efficient solutions.



**SIMPLIFIED  
SUPPLY CHAIN**



**TRUSTED  
ADVISOR**



**APPLICATION  
ENGINEERING**



**GLOBAL  
PRESENCE**



**CONTINUOUS  
INNOVATION**

## **BOSTON GEAR™**

**Regal Rexnord**

[regalrexnord.com](http://regalrexnord.com) | [bostongear.com](http://bostongear.com)

1-888-999-9860

APPLICATION SUPPORT

1-800-816-5608



**BUILD TO YOUR  
APPLICATION SPECS**

The proper selection and application of products and components, including assuring that the product is safe for its intended use, are the responsibility of the customer. To view our Application Considerations, please visit <https://www.regalrexnord.com/Application-Considerations>.  
To view our Standard Terms and Conditions of Sale, please visit <https://www.regalrexnord.com/Terms-and-Conditions-of-Sale>.

"Regal Rexnord" is not indicative of legal entity. Refer to product purchase documentation for the applicable legal entity.

Regal Rexnord and Boston Gear are trademarks of Regal Rexnord Corporation or one of its affiliated companies.

© 2024, 2025 Regal Rexnord Corporation, All Rights Reserved.

MCB-11601-BG-EN-US 08/25

**RegalRexnord™**