

Huco Flex G Jaw Couplings

PERFORMANCE RANGE AT A GLANCE

- Zero/Low backlash
- Power rated to 679 kW @1800 rev/min
- Maximum torque over 7kNm
- Speeds up to 40,000 rev/min (small couplings)
- Suitable for shaft sizes from 1mm to 100mm
- Operating temperatures from -40°C to +80°C

KEY FEATURES

- Drive remains engaged in the event of element failure
- Compact design, high torque capacity
- No lubrication required, saves time
- Interchangeable with industry standard couplings
- Non-standard bores / machining available
- Electrically Isolating
- Shaft connection: Setscrew or Clamp (+ keyway)
- Choice of Aluminium or Steel hubs
- Choice of elements for properties needed

Blue	Soft	Excellent damping
White	Medium	Moderate damping - general applications
Red	Hard	High torque applications
Green		High Torque & Temperature

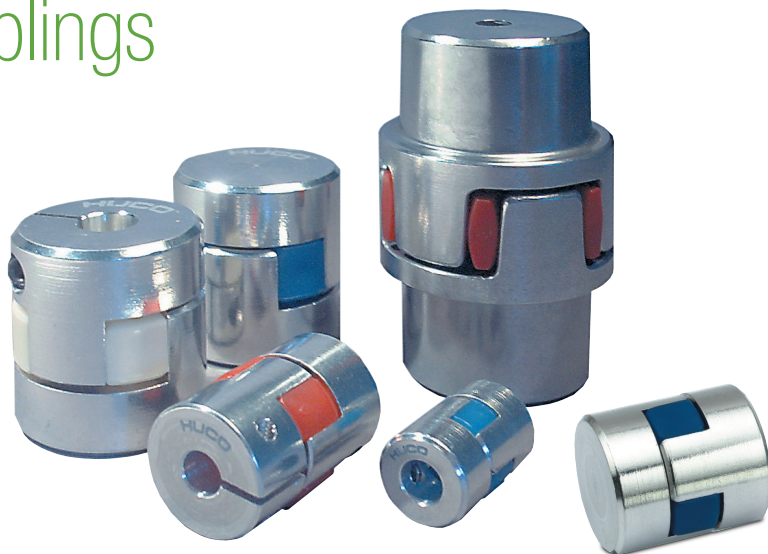
SERVICE & SUPPORT

- Stocks in the UK at Huco, short lead times*
- Expert technical support

TYPICAL APPLICATIONS

- Pumps & Compressors
- Material Handling / Conveyors
- Packaging & Automation
- Stepper & Servo drives

*Subject to availability



Huco can also respond quickly with a wide variety of additional coupling types; Beam, Bellows, Oldham and more.



www.huco.com

Merchant Drive, Hertford
Hertfordshire SG13 7BL - England
+44(0)1992 501900
Email: enquiries@huco.com