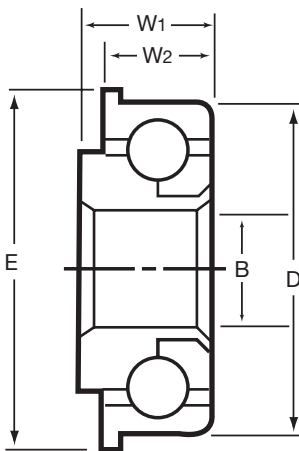
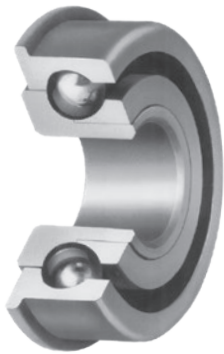


# Kilian™ Flange Machine Race Ball Bearings

ENGINEERED FOR LOW PRECISION APPLICATIONS  
WITH HIGH TOLERANCE STACK-UPS

## DESIGN AND OPERATIONAL SPECIFICATIONS

- Designed for light loads and speeds up to 1200 RPMs
- Mount directly into wheel hubs, pulleys and conveyor rollers
- Full complement of precision steel balls in deep ball grooves
- Heat-treated races machined from steel bar stock to a controlled finish
- Thrust capacity in either direction is 50% of listed radial rating



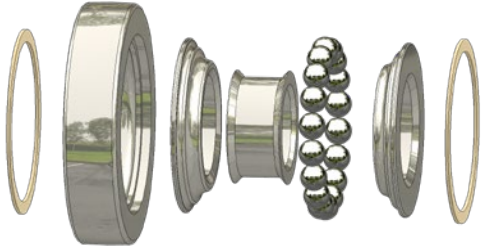
Bearing Number	Bore B Tolerance +.005 to -.000	Outside Diameter D Tolerance +.005 to -.000	Width W <sub>1</sub>	Width W <sub>2</sub> Tolerance ±.005	E	Balls		Radial Load Rating at 600 RPM
	in.	in.	in.	in.	in.	No.	Size in.	lbs
F150	1/4	11/16	5/16	1/4	13/16	12	1/8	32
F155	1/4	3/4	5/16	1/4	7/8	12	1/8	32
F160	1/4	13/16	5/16	1/4	29/32	13	1/8	34
F165	5/16	7/8	5/16	1/4	1	15	1/8	40
F175-1	1/4	29/32	7/16	3/8	1	13	5/32	53
F175-2	5/16	29/32	7/16	3/8	1	13	5/32	53
F175-3	3/8	29/32	7/16	3/8	1	16	1/8	42
F175-4	7/16	29/32	7/16	3/8	1	17	1/8	45
F200-1	7/16	29/32	7/16	11/32	1-1/16	17	1/8	45
F225	3/8	1	7/16	3/8	1-1/8	14	5/32	57
F250	7/16	1-1/16	7/16	3/8	1-3/16	15	5/32	61
F250-2	3/8	1-1/16	7/16	3/8	1-3/16	15	5/32	61
F300	1/2	1-1/8	1/2	3/8	1-1/4	16	5/32	65
F300-19	3/8	1-1/8	1/2	3/8	1-1/4	16	5/32	65
F310	1/2	1-3/16	1/2	3/8	1-5/16	16	5/32	65
F325	9/16	1-1/4	1/2	7/16	1-3/8	18	5/32	74
F350-11	3/8	1-3/8	1/2	7/16	1-1/2	11	1/4	115
F350-12	1/2	1-3/8	1/2	7/16	1-1/2	12	1/4	125
F350-13	5/8	1-3/8	1/2	7/16	1-1/2	17	3/16	99
F350-89	3/4	1-3/8	7/16	3/8	1-1/2	22	5/32	90
F500	11/16	1-1/2	5/8	7/16	1-5/8	18	3/16	110
F550	1/2	1-9/16	21/32	17/32	1-11/16	12	1/4	125
F600-3	3/4	1-5/8	9/16	1/2	1-3/4	15	1/4	157
F700	3/4	1-11/16	9/16	1/2	1-13/16	15	1/4	157
F750	3/4	1-3/4	5/8	9/16	1-7/8	15	1/4	157
F750-21	1/2	1-3/4	5/8	9/16	1-7/8	15	1/4	157
F850	5/8	1-7/8	5/8	9/16	2	17	1/4	178
F1000	7/8	2	5/8	9/16	2-1/8	19	1/4	200
F1000-4	1	2	5/8	9/16	2-1/8	19	1/4	200
F1100	11/4	2-1/8	5/8	9/16	2-1/4	21	1/4	220

# Kilian™ Machine Race Ball Bearings

## MACHINE RACE BEARINGS VS. PRECISION GROUND BEARINGS

While many Single Row, Double Row, or Flange bearings may appear identical and fit the same application, subtle differences in design and materials impact their performance and longevity.

### MACHINE RACE BEARINGS



- Optimized for sliding/rolling applications and high tolerance stack-ups
- Excels in low-speed, low-load conditions with axial forces and misalignment
- Features full complement ball design with wider tolerances for smooth operation
- Heat-treated/plated machine race options for corrosion resistance
- Customizable with grooves, nylon tires, and fasteners per application needs

### MACHINE RACE APPLICATIONS

- RV slideouts and vehicle door systems
- Low-speed food/beverage machinery
- Sliding doors (garage, truck, overhead)
- Harsh environment conveyors (dry cleaning, etc.)
- Material handling and pallet storage systems

VS.

### PRECISION GROUND BEARINGS



- Engineered for high-speed rotation in motors and gearboxes
- Requires precision manufacturing with tight tolerances
- Follows standardized international part numbering
- Limited corrosion resistance due to plating/heat treatment restrictions
- Sensitive to misalignment from precise internal geometry

### PRECISION BEARING APPLICATIONS

- High-RPM engines and gearboxes
- Precision machinery requiring tight tolerances
- Heavy-load equipment

Kilian provides both Machine Race and Precision bearings, each optimized for specific applications. Using the wrong bearing can lead to poor performance and pre-mature failure. Contact our experts at 1-315-432-0700 ext. 7432 or visit [kilianbearings.com](https://www.kilianbearings.com) to ensure you select the right solution for your needs.

# KILIAN™

**Regal Rexnord**  
[regalrexnord.com](https://www.regalrexnord.com)

[www.kilianbearings.com](https://www.kilianbearings.com) | 315-432-0700  
1728 Burnet Avenue  
Syracuse, NY 13206 - USA

The proper selection and application of products and components, including assuring that the product is safe for its intended use, are the responsibility of the customer. To view our Application Considerations, please visit <https://www.regalrexnord.com/Application-Considerations>. To view our Standard Terms and Conditions of Sale, please visit <https://www.regalrexnord.com/Terms-and-Conditions-of-Sale>

"Regal Rexnord" is not indicative of legal entity. Refer to product purchase documentation for the applicable legal entity. Regal Rexnord and Kilian are trademarks of Regal Rexnord Corporation or one of its affiliated companies.  
© 2025 Regal Rexnord Corporation, All Rights Reserved. MCF-11335-KM-EN-US 04/25

**RegalRexnord™**