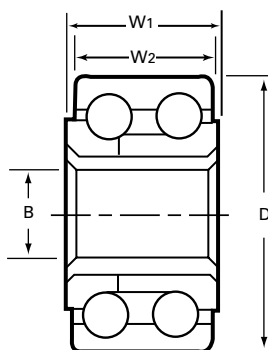
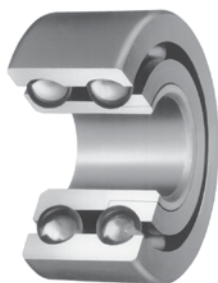


# Kilian™ Double-Row Machine Race Ball Bearings

FOR HEAVIER LOADS THAT HAVE BOTH  
AXIAL AND RADIAL FORCES

## DESIGN AND OPERATIONAL SPECIFICATIONS

- Designed for heavier loads and speeds up to 1200 RPMs
- Double row of full complement precision steel balls in deep ball grooves for increased stability
- Heat-treated races machined from steel bar stock to a controlled finish
- Thrust capacity in either direction is 33% of listed radial rating



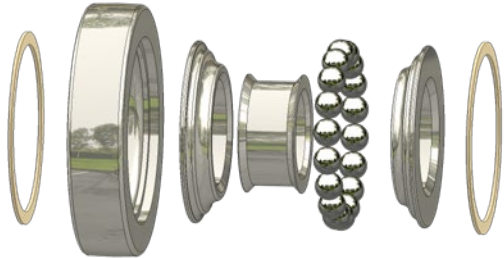
Bearing Number	Bore B	Outside Diameter D	Width W <sub>1</sub>	Width W <sub>2</sub>	Balls		Radial Rating at 600 RPM
	Tolerance +.005 to -.000	Tolerance +.000 to .005		Tolerance ±.005	No.	Size	
in.	in.	in.	in.	in.		in.	lbs
D2253	3/16	11/16	7/16	13/32	22	1/8	43
D2254	1/4	11/16	7/16	13/32	24	1/8	48
D2255	1/4	3/4	7/16	13/32	24	1/8	48
D2267	1/4	7/8	7/16	13/32	24	5/32	73
D2269	3/8	7/8	7/16	13/32	32	1/8	63
D2290	3/8	1	7/16	13/32	28	5/32	85
D2337	1/2	1-1/8	9/16	17/32	32	5/32	99
D2383	5/8	1-3/8	5/8	19/32	34	3/16	148
D2500	1/2	1-1/2	3/4	23/32	26	1/4	204
D3010	3/4	2	7/8	27/32	38	1/4	300

# Kilian™ Machine Race Ball Bearings

## MACHINE RACE BEARINGS VS. PRECISION GROUND BEARINGS

While many Single Row, Double Row, or Flange bearings may appear identical and fit the same application, subtle differences in design and materials impact their performance and longevity.

### MACHINE RACE BEARINGS



- Optimized for sliding/rolling applications and high tolerance stack-ups
- Excels in low-speed, low-load conditions with axial forces and misalignment
- Features full complement ball design with wider tolerances for smooth operation
- Heat-treated/plated machine race options for corrosion resistance
- Customizable with grooves, nylon tires, and fasteners per application needs

### MACHINE RACE APPLICATIONS

- RV slideouts and vehicle door systems
- Low-speed food/beverage machinery
- Sliding doors (garage, truck, overhead)
- Harsh environment conveyors (dry cleaning, etc.)
- Material handling and pallet storage systems

**VS.**

### PRECISION GROUND BEARINGS



- Engineered for high-speed rotation in motors and gearboxes
- Requires precision manufacturing with tight tolerances
- Follows standardized international part numbering
- Limited corrosion resistance due to plating/heat treatment restrictions
- Sensitive to misalignment from precise internal geometry

### PRECISION BEARING APPLICATIONS

- High-RPM engines and gearboxes
- Precision machinery requiring tight tolerances
- Heavy-load equipment

Kilian provides both Machine Race and Precision bearings, each optimized for specific applications. Using the wrong bearing can lead to poor performance and premature failure. Contact our experts at 1-315-432-0700 ext. 7432 or visit [kilianbearings.com](https://www.kilianbearings.com) to ensure you select the right solution for your needs.

## KILIAN™

**Regal Rexnord**  
[regalrexnord.com](https://www.regalrexnord.com)

[www.kilianbearings.com](https://www.kilianbearings.com) | 315-432-0700  
1728 Burnet Avenue  
Syracuse, NY 13206 - USA

The proper selection and application of products and components, including assuring that the product is safe for its intended use, are the responsibility of the customer. To view our Application Considerations, please visit <https://www.regalrexnord.com/Application-Considerations>. To view our Standard Terms and Conditions of Sale, please visit <https://www.regalrexnord.com/Terms-and-Conditions-of-Sale>

"Regal Rexnord" is not indicative of legal entity. Refer to product purchase documentation for the applicable legal entity. Regal Rexnord and Kilian are trademarks of Regal Rexnord Corporation or one of its affiliated companies.  
© 2025 Regal Rexnord Corporation, All Rights Reserved. MCF-11351-KM-EN-US 04/25

**RegalRexnord™**