

# AllTorque

THE LATEST NEWS FROM  
TWIFLEX, WICHITA, BIBBY,  
STIEBER (UK) & STROMAG (UK)

**Twiflex**  
[www.twiflex.com](http://www.twiflex.com)

**Wichita Clutch**  
[www.wichitaclutch.co.uk](http://www.wichitaclutch.co.uk)

**Bibby Turboflex**  
[www.bibbyturboflex.com](http://www.bibbyturboflex.com)

**Stieber**  
[www.stieberclutch.com](http://www.stieberclutch.com)

**Stromag**  
[www.stromag.com](http://www.stromag.com)

## Twiflex Industrial Turning, Locking & Braking Systems

### INSIDE THIS ISSUE:

Twiflex TL System

Twiflex is Now Generating  
Its Own Power!

Wichita Marine  
MSV-HE Clutches

New Twiflex E-Store

Twiflex Flexi  
Clutch Rebuild

Follow Twiflex on  
Social Media

**Regal Rexnord**

Follow **Regal Rexnord** on:



For more information, visit the brand  
sites above, [www.regalrexnord.com](http://www.regalrexnord.com)  
or call us on 01234 350311



Scan to download  
the interactive version  
of AllTorque



## Twiflex TL Turning & Locking System for Auto Shredders

A major US scrap metal recycler needed a replacement shaft turning and locking system for a large auto shredder at one of its facilities in central Florida. The turning/locking device is required when power to the shredder is shut off so crews can replace worn hammers on the large mill rotor. During this maintenance operation, the rotor becomes significantly unbalanced as hammers get removed. This causes the rotor to rotate, creating a dangerous condition for workers.

Working closely with the facility operator, Twiflex engineers designed a stationary drive solution that was significantly more cost-effective than the competitive design, and presents significant savings in time and manpower versus the prior working method - half the people, half the time!

The new Twiflex custom Turning/Locking (TL) System was installed on the hammer drum drive shaft near the 3000 HP drive motor. It allows continuous, bi-directional turning at slow speed so workers have easier access to worn hammers. The remotely-operated locking device securely holds the rotor in place preventing unwanted rotation. A brake function can also be integrated which reduces the amount of time for the shredder to stop.

The compact system includes a manually engaged and disengaged turning gear drive pinion with a 1.1 kW motor to produce 21.7 kNm start-up torque, acting on a 1500mm dia. x 30mm thick, radially-split gearwheel with a nominal turning speed of 0.3 rpm. The locking device is a pneumatically engaged/disengaged tooth lock (2 teeth) which automatically engages with the gearwheel to provide 47 kNm torque.

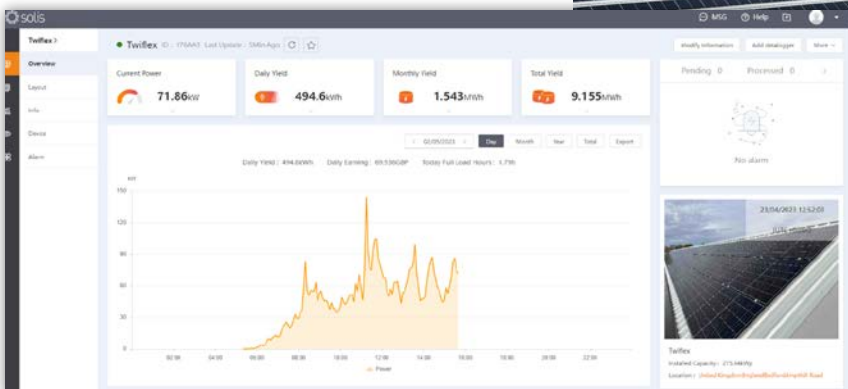
For more information,  
download P-8972-TF from  
[www.AltraLiterature.com](http://www.AltraLiterature.com)



## Twiflex is Now Generating Its Own Power!

After extensive planning and preparation by our Facilities team, we have a comprehensive, modern working solar array on our facility roof. It's not only generating power for our manufacturing and general purposes, but also feeding back into the power grid. This 275 Kw array significantly impacts our power consumption and reduces our carbon footprint. In line with our commitment to sustainability and improving the local environment wherever possible, generating power from a renewable energy source is an excellent step along our path towards net zero.

Learn more about Regal Rexnord's  
Net Zero Goals by visiting  
[RegalRexnord.com](http://RegalRexnord.com)





## Wichita Marine MSV-HE Clutches for Dredge and Jet Pump Drives

As the trend for diesel engines of lighter construction and increasingly dual fuel compatibility continues, the need for a reliable clutch system that can engage at elevated engine idle speeds and offer extended acceleration times can dramatically improve the pump start up profile whilst limiting the power demand from the diesel engine. The sintered metallic 'high energy' friction clutch provides a greater thermal mass capable of withstanding extremely high start and overload slipping energy events with minimal friction wear when compared to similar sized organic friction clutches. The dredge pump drives are critical to the operation of any dredging vessel and, therefore, a robust reliable clutch solution is essential in keeping maintenance and costly downtime to a minimum. Wichita can also provide a full range of electro pneumatic control systems to suit the specific requirements of cutter and dredge pump drives.

### Features:

- Air-applied with sintered metal friction material
- High heat capacity
- Multi-plate designs up to 1500 mm diameter for high torque applications
- Pin-drive arrangement creates an open ring design for improved cooling flow and dust ejection whilst providing clear visual inspection opportunities for maintenance planning
- Designed and built for the marine environment
- Easily integrates with all leading flexible coupling brands

For more information,  
download P-8865-WC from  
[www.AltraLiterature.com](http://www.AltraLiterature.com) and visit  
[RegalRexnordMarineSolutions.com](http://RegalRexnordMarineSolutions.com)



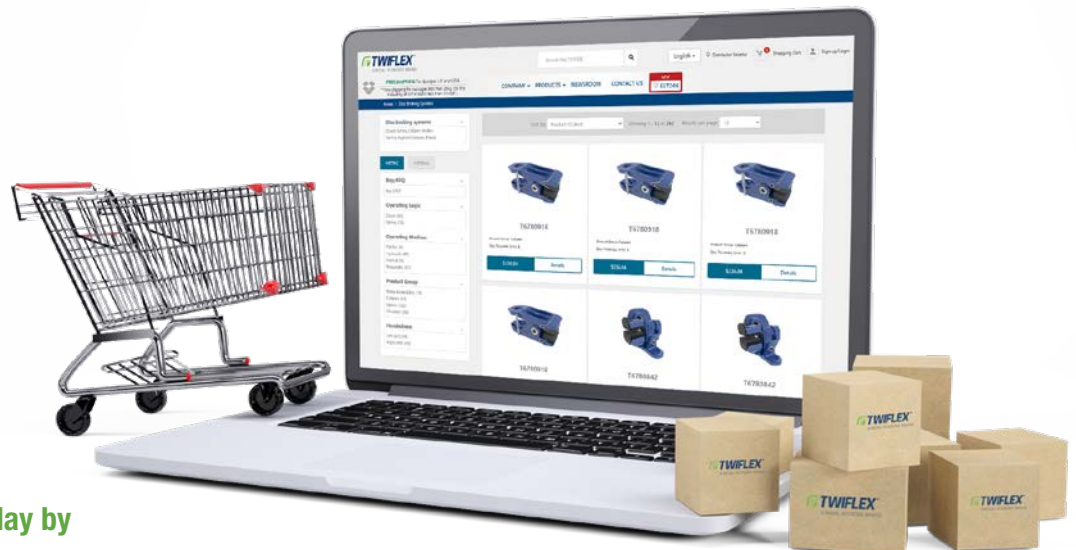
## New Twiflex E-Store Offers Instant Access to Disc Brakes, Accessories!

Earlier this year, Twiflex launched its E-Store to streamline the purchasing process for users.

With the click of a button, customers can now order the following via credit card: disc brakes, assemblies, and accessories right to their doorstep. They may even qualify for free shipping!

Twiflex customers can now purchase a wide range of disc braking systems and accessories, including:

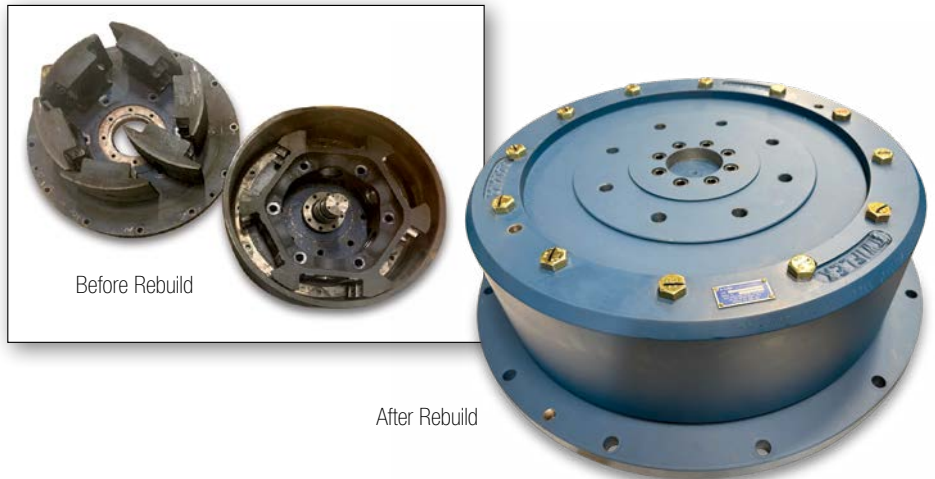
- Lever brake calipers
- Compact modular brakes
- Spring applied thrusters
- Direct acting (pressure applied) brakes and thrusters
- Replacement brake pads
- Spare parts and accessories



Shop the Twiflex E-Store today by  
visiting [Twiflex.com/Estore-Products](http://Twiflex.com/Estore-Products)

## Twiflex Flexi Clutch Rebuild for an Offshore Oil Rig Fire Pump

A major manufacturer of highly engineered pump and valve solutions needed a customer's clutch refurbished. The Twiflex Flexi Clutch is utilised in a fire-fighting system on an offshore oil and gas drilling platform. These vital fire water pumps must be available 24/7/365 because if the pumps go out of service, the platform can't continue operations without serious risk to personnel and equipment, combined with the costs associated with lost production. Positioned between the engine and water pump, the clutch provides critical torsional flexibility and damping, as well as no-load starting of the diesel engine.



The customer sent the Twiflex Flexi Clutch to the Twiflex Rebuild Center in Bedford, UK for repair to original condition. The facility offers comprehensive repair and rebuild services for several Regal Rexnord brands, including Twiflex, Bibby Turboflex and Wichita Clutch.

Upon arrival at the center, the clutch was stripped down and individual parts were inspected for suitability of re-use by Twiflex technicians and engineers. The main components such as the drum, drum adapter plate, flywheel adapter plate, bearing housing, bearing stub shaft and hub were all in good condition and able to be re-used. The fasteners, springs and bearings were all replaced as standard practice. Damaged friction shoes were also replaced.

The main clutch components were shot blasted, thoroughly cleaned, and re-painted. The clutch was re-assembled using new and existing parts. A new serial plate label was added for future ease in identification. The re-assembled clutch was set and tested to meet the customers specifications. The refurbished clutch was shipped back to the customer in "like new" condition with a full 1-year warranty.

*At the **Twiflex Repair & Rebuild Service Centre**, we pride ourselves on delivering exceptional service, support, and repair to help you achieve peak performance and maximum efficiency from your assets. With our range of services tailored to meet your unique needs, you can rely on us to minimise unplanned downtime through preventative and predictive maintenance.*



**For more information,  
download P-9020-TF from  
[www.AltraLiterature.com](http://www.AltraLiterature.com)**

## Follow Twiflex on Social Media

You may have noticed more content on social media – we encourage you to view our posts and videos on LinkedIn, Twitter, and Facebook. Check out, like and comment on the videos. Let us know what you think and share similar success stories.

**Follow Twiflex on:**

