

## Complete Wastewater Solutions

ACHIEVE ANNUAL COST SAVING THROUGH  
ENERGY, CAPITAL AND MAINTENANCE  
REDUCTIONS



# COMPLETE WASTEWATER INDUSTRY SOLUTIONS

**Regal Rexnord delivers comprehensive powertrain solutions specifically designed to address the unique challenges faced by the wastewater industry. Our automation-focused approach empowers customers with customized and reliable solutions, all from a single trusted provider.**

With over 150 years of expertise, our team leverages an industry-leading portfolio of conveying chains and components, gearboxes, motors, couplings, bearings, and remote condition monitoring. These advanced solutions enable wastewater facilities to optimize efficiency, minimize operational costs, and ensure compliance with stringent environmental and governmental regulations. At Regal Rexnord, we understand the critical importance of dependable systems in protecting public health and sustaining the environment.





## REGAL REXNORD MISSION

Regal Rexnord is committed to creating a better tomorrow with sustainable solutions that power, transit and control motion. For us, this means creating innovative solutions that focus on both customer needs and our commitment to sustainability.

We understand the unique goals and challenges that wastewater facilities face. The breadth of our portfolio, combined with extensive industry expertise aim to extend equipment performance while reducing operation cost and energy consumption.





# Complete Wastewater Solutions

ACHIEVE ANNUAL COST SAVING THROUGH ENERGY, CAPITAL AND MAINTENANCE REDUCTIONS

## TRENDS

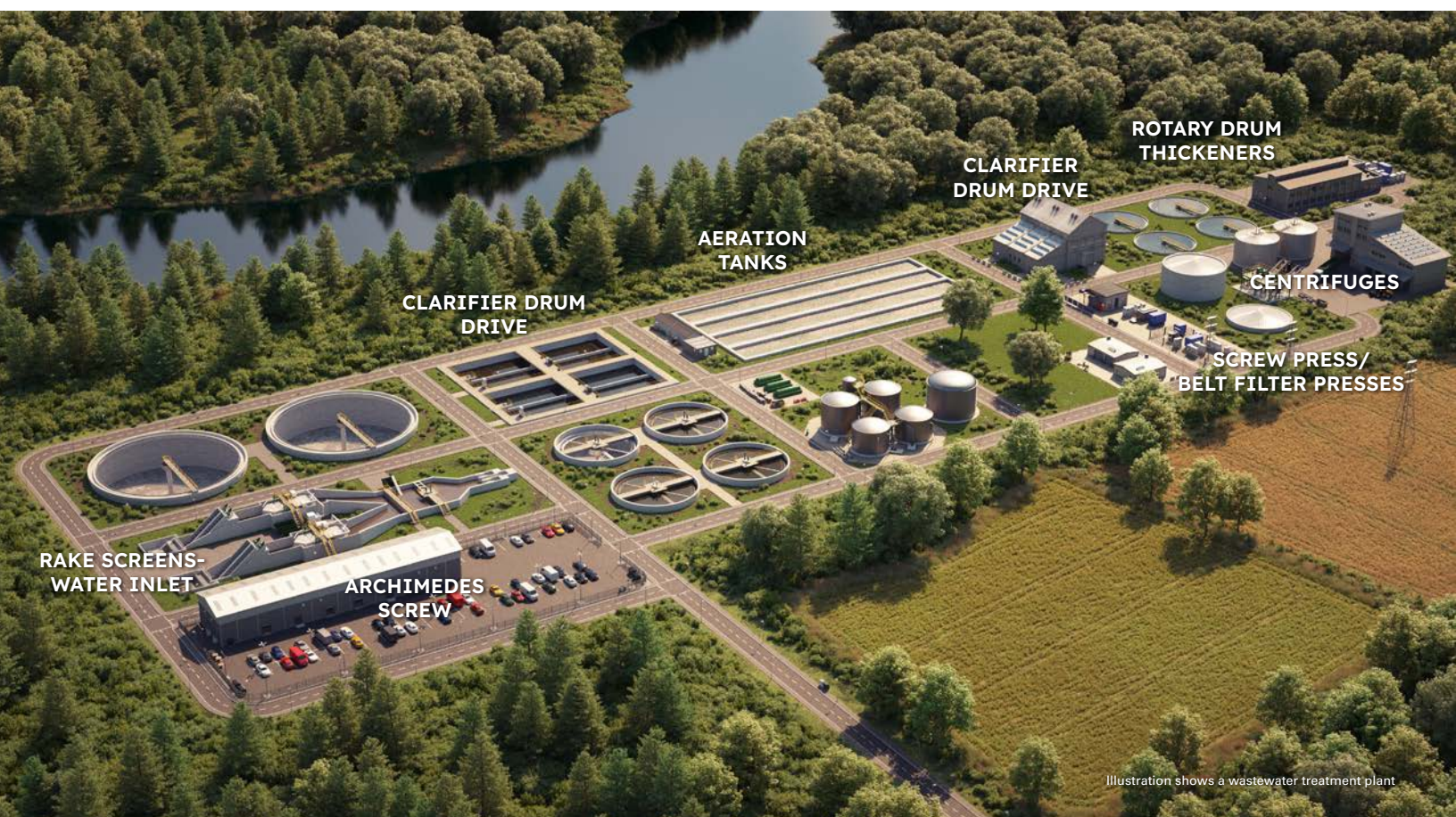
The water and wastewater industry is highly regulated and must continue to meet tighter water quality standards. Plant demands depend on commercial, industrial, and residential water use that are tied to economic and population growth.

- **HIGHLY RELIABLE EQUIPMENT**

Equipment operates in a 24/7 mode with dependability critical to a facilities performance, where uptime is measured in minutes not hours. Regal Rexnord components are a drop-in replacement of existing components and through innovative components can reduce maintenance requirements. Simply stated, we build mission-critical motors, VFDs, couplings, reducers, gear drives and bearings.

- **ENERGY EFFICIENCY**

With the cost of energy on the rise, we are an industry leader in variable speed energy efficient motors that minimize lifecycle costs. Our helical-bevel gear drives have some of the highest efficiencies in the industry at over 90%.



| Regal Rexnord Products  |                          |                  |                       |                |                        |             |                                 |  |
|---|--------------------------|------------------|-----------------------|----------------|------------------------|-------------|---------------------------------|--|
|   | Rake Screens-Water Inlet | Archimedes Screw | Clarifier Drum Drives | Aeration Tanks | Rotary Drum Thickeners | Centrifuges | Screw Press/Belt Filter Presses |  |
| GEARING & GEARMOTORS  |                          |                  |                       |                |                        |             |                                 |  |
| IE4-PM Synchronous Geared Motors for Explosion Hazardous Areas                  |                          |                  |                       |                |                        |             |                                 |  |
| Bauer™ Gearmotor BF Series Shaft Mounted Gearmotor                              |                          |                  | ●                     |                |                        |             |                                 |  |
| Bauer Gearmotor BK Series Bevel Gearmotor                                       |                          |                  |                       |                | ●                      |             |                                 |  |
| Bauer Gearmotor BG Series Helical Geared Motor                                  |                          |                  | ●                     | ●              | ●                      |             | ●                               |  |
| Hub City™ Bevel Gearbox   |                          |                  | ●                     |                |                        |             | ●                               |  |
| Bauer Gearmotor BG Series Submersible Helical Geared Motor                      | ●                        |                  | ●                     | ●              |                        |             |                                 |  |
| Bauer Gearmotor BK Series Submersible Bevel Geared Motor                        |                          | ●                |                       |                | ●                      |             |                                 |  |
| Bauer Gearmotor BF Series Submersible Shaft Mounted Geared Motor                |                          |                  |                       |                | ●                      | ●           |                                 |  |
| Bauer Gearmotor BS Series Submersible Worm Geared Motor                         | ●                        |                  | ●                     |                |                        |             |                                 |  |
| BEARINGS  |                          |                  |                       |                |                        |             |                                 |  |
| Rex™ & Link-Belt™ Mounted Spherical Roller Bearings                             |                          | ●                | ●                     | ●              | ●                      | ●           | ●                               |  |
| Sealmaster™ Mounted Tapered Bearings  |                          | ●                | ●                     | ●              | ●                      | ●           | ●                               |  |
| Link-Belt™ & Sealmaster™ Mounted Ball Bearing                                   |                          | ●                |                       |                |                        |             | ●                               |  |
| Rollway™ Unmounted Bearing  |                          |                  | ●                     |                |                        | ●           |                                 |  |
| Browning™ Mounted Bearings  |                          | ●                | ●                     |                |                        | ●           | ●                               |  |
| COUPLINGS   |                          |                  |                       |                |                        |             |                                 |  |
| Falk™ Steelflex™ Grid Couplings   |                          |                  | ●                     | ●              |                        |             |                                 |  |
| Amerdrives™ Shaft Gear Couplings  | ●                        |                  |                       |                |                        | ●           |                                 |  |
| Falk™ Lifelign™ Gear Couplings  |                          |                  |                       |                | ●                      |             |                                 |  |
| Jaure™ MT (Europe Only)   |                          |                  |                       |                | ●                      |             |                                 |  |
| Rexnord™ Omega™ & Viva™   |                          | ●                | ●                     | ●              | ●                      |             |                                 |  |
| TB Wood's™ Sure-Flex Plus™  |                          | ●                | ●                     |                |                        |             |                                 |  |
| Ameridrives Americardan™ U-Joints   |                          |                  |                       |                | ●                      |             |                                 |  |
| Falk Wrapflex™ Elastomeric Couplings  |                          |                  | ●                     |                |                        |             |                                 |  |
| Falk Orange Peel™ Rotating Shaft Guards   |                          |                  | ●                     |                |                        |             |                                 |  |
| CONVEYING   |                          |                  |                       |                |                        |             |                                 |  |
| Polymeric Chains (NH78, NH82)   |                          |                  | ●                     |                | ●                      |             |                                 |  |
| Static Screens  |                          |                  | ●                     |                |                        |             |                                 |  |
| Traveling Water Screens   |                          |                  | ●                     |                |                        |             |                                 |  |
| Trash Racks   |                          |                  | ●                     |                |                        |             |                                 |  |
| CLUTCHES & BRAKES   |                          |                  |                       |                |                        |             |                                 |  |
| Bibby™ Turboflex™ Torque Limiters   |                          |                  | ●                     |                |                        |             |                                 |  |
| Formsprag™ Backstops (FSO, FRB, HSB)  |                          |                  | ●                     |                |                        |             |                                 |  |
| Marland™ Overrunning Clutches (CECON)   |                          |                  |                       | ●              |                        |             |                                 |  |
| Autogard™ WT Series Torque Limiters   |                          |                  | ●                     |                |                        |             |                                 |  |
| Stearns™ SAB 56,800; 65,300; 87,300; 87,800 Series Electromagnetic Motor Brakes |                          | ●                | ●                     | ●              |                        | ●           | ●                               |  |
| SERVICES  |                          |                  |                       |                |                        |             |                                 |  |
| Perceptiv™ Condition Based Monitoring Systems                                   |                          |                  | ●                     |                |                        |             |                                 |  |
| Custom Shafting   |                          |                  | ●                     |                |                        |             |                                 |  |
| Custom Guarding   |                          |                  | ●                     |                |                        |             |                                 |  |
| Custom Baseplates   |                          |                  | ●                     |                |                        |             |                                 |  |



# Complete Wastewater Solutions

IMPROVE EFFICIENCY THROUGHOUT WASTEWATER OPERATIONS WITH TAILORED POWERTRAIN SOLUTIONS

## GEAR DRIVES



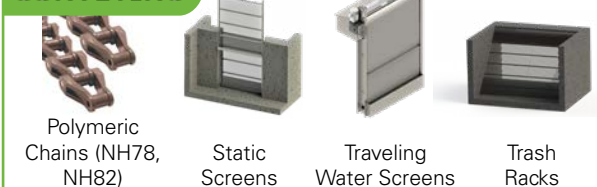
## BEARINGS



## COUPLINGS



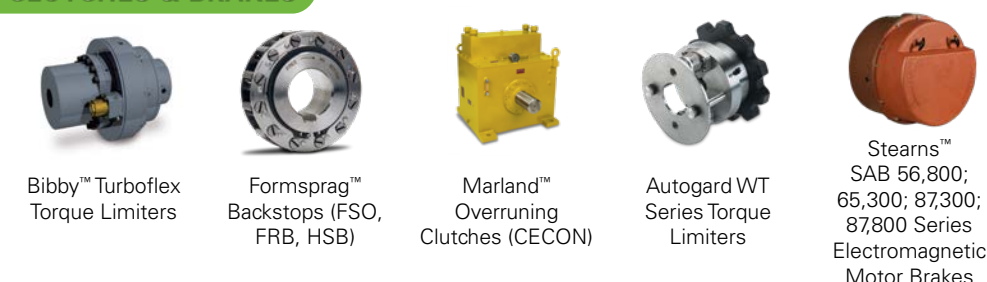
## CONVEYING



## SERVICES



## CLUTCHES & BRAKES





# At Regal Rexnord, we are committed to creating a better tomorrow through continuous innovation, sustainability, and customer success

As a global leader in highly engineered motion control systems, air moving solutions, and power transmission components we offer sustainable, innovative solutions that ensure efficiency, reliability, and performance.

**Integrity, responsibility, and a passion to win is the foundation of who we are.** We value our associates, creating a diverse, engaged, and inclusive work environment that drives innovation and excellence. As your trusted advisor we offer unparalleled expertise and support, helping to unlock peak performance and build stronger businesses. Whether through cutting-edge technology or comprehensive service offerings, Regal Rexnord is proud to be a reliable partner in your progress.

We have deliberately curated our portfolio to better serve the evolving needs of our customers and stakeholders through the merger of Regal Beloit and Rexnord PMC, as well as the acquisition of Altra Industrial Motion. Our broad

portfolio of components and condition monitoring solutions empower customers to build smarter factories, improve operational efficiency, and lead the future of manufacturing.

With a global presence and decades of deep industry expertise, Regal Rexnord is uniquely positioned to provide comprehensive, integrated solutions that enhance performance at every level. From design and sourcing to installation and condition monitoring, our expert teams are dedicated to optimizing your operations and supporting your long-term success.

Together through innovation, collaboration, and a shared vision for a brighter future, **we create a better tomorrow.**



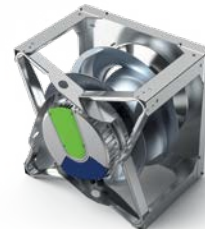
## OPERATING SEGMENTS



**AUTOMATION & MOTION  
CONTROL**



**INDUSTRIAL POWERTRAIN  
SOLUTIONS**



**POWER EFFICIENCY  
SOLUTIONS**

Regal Rexnord provides you with unparalleled support and expertise through our team of:



**1200+**  
SALES  
PROFESSIONALS



**800+**  
CUSTOMER CARE  
ASSOCIATES



**1800+**  
EXPERT  
ENGINEERS



Creating a comprehensive team of trusted advisors across:

**30** FOCUSED INDUSTRIES  
**100+** UNIQUE APPLICATIONS  
**60** TRUSTED BRANDS  
**19** PRODUCT CATEGORIES  
**100+** PRODUCTS

# REGAL REXNORD POWERTRAIN SOLUTIONS

You have challenges. **We have solutions.**

To solve your critical challenges, it is essential to partner with a **global company** with **local resources**, **reputable brands**, and a **proven history** of delivering cost-efficient solutions.



**SIMPLIFIED  
SUPPLY CHAIN**

**TRUSTED  
ADVISOR**

**APPLICATION  
ENGINEERING**

**GLOBAL  
PRESENCE**

**CONTINUOUS  
INNOVATION**

*Any Industry, Any Application.*

Get started at [RegalRexnord.com/Water](https://www.RegalRexnord.com/Water)

## Regal Rexnord

Customer Service: 800-626-2120

Technical Service: 800-626-2093

[CustomerService.PTSolutions@regalrexnord.com](mailto:CustomerService.PTSolutions@regalrexnord.com)

[regalrexnord.com](https://www.regalrexnord.com)

The proper selection and application of products and components, including assuring that the product is safe for its intended use, are the responsibility of the customer. To view our Application Considerations, please visit <https://www.regalrexnord.com/Application-Considerations>.

To view our Standard Terms and Conditions of Sale, please visit <https://www.regalrexnord.com/Terms-and-Conditions-of-Sale> (which may redirect to other website locations based on product family).

"Regal Rexnord" is not indicative of legal entity. Refer to product purchase documentation for the applicable legal entity.

Regal Rexnord, Ameridrives, Americardan, Autogard, Bauer Gearmotor, Bibby Turboflex, Browning, Falk, Formsprag, Hub City, Jaure, Lifelign, Link-Belt, Marland, Omega, Orange Peel, Perceptiv, Rex, Rollway, Sealmaster, Stearns, Steelflex, Sure-Flex Plus, TB Wood's, Viva, and Wrapflex are trademarks of Regal Rexnord Corporation or one of its affiliated companies.

© 2025 Regal Rexnord Corporation, All Rights Reserved. MCB-12029-C-EN-US 11/25

Scan to visit the  
Water and Wastewater  
Site



 **RegalRexnord™**