



# Core Industrial Solutions

TRUSTED STANDARD PRODUCT SOLUTIONS  
FROM REGAL REXNORD



# When reliability can't wait.

Regal Rexnord offers a carefully selected lineup of curated product solutions designed to meet the needs of our customers in industries where performance, durability, longevity, and availability are essential. These products have cemented their place in our portfolio throughout the past 125+ years through proven field performance, strong market demand, and consistent availability.

We ensure our customers can get the products they need, whether expanding your operations, maintaining existing equipment, or responding quickly to minimize downtime.



## Proven Industry Leading Brands

***Browning***™    ***FALK***™    ***MCGILL***™

***Rex***™    ***REXNORD***™    ***SEALMASTER***™

***BAUER GEAR MOTOR***™    ***BOSTON GEAR***™

***GROVE GEAR***™    ***HUB CITY***™    ***KOP-FLEX***™

***LINK-BELT***™    ***MORSE***™    ***TB WOOD'S***™    ***VALU GUIDE***™





## PRODUCT READINESS

The majority of the products featured in this brochure are in stock and ready to ship. Some solutions may require light configuration to meet your specific operational needs. These products are identified as **Configurable Products** and typically ship within **3–5 business days**.

In addition to the standard product offerings shown here, a wider range of configurable solutions are also available with the same **3–5 day lead time**, including:

- Open gearing
- Ultramite™ gear drives
- Cambridge™ metal conveyor belts and engineered woven mesh
- RexPro™ engineered chain
- Unmounted bearings (ball, cylindrical roller, needle roller, and spherical roller by Sealmaster™, Link-Belt™, Rollway™, Rex™, McGill™)
- Finished bore hubs for couplings

## INDUSTRIES SERVED

- Aggregate
- Beverage
- Cement
- Food
- Oil & Gas
- Package & Material Handling
- Pulp & Paper / Wood Products

# Gearboxes, Gear Drives & Gear Motors

Gear solutions that scale with your operation—delivering improved uptime, reduced maintenance, and lower total cost of ownership.

## WORM GEAR

Regal Rexnord offers the most complete & configurable worm gear portfolio in the market.



**BOSTON GEAR™  
GEN2 SS700 SERIES**



**BOSTON GEAR  
7700 SERIES**



**GROVE GEAR™  
IRONMAN 800 SERIES**



**BOSTON GEAR  
BK & SBK SERIES**



**GROVE GEAR  
ELECTRA / EL SERIES**



**GROVE GEAR  
GR SERIES**



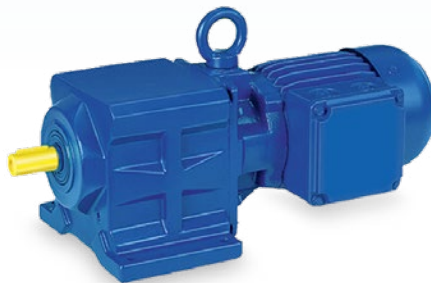
**GROVE GEAR  
SS SERIES**

*Standard Products: Off the Shelf | Drop-In Replacements*

## GEAR MOTORS



**BAUER GEAR BK SERIES  
HELICAL RIGHT ANGLE**



**BAUER GEAR BG SERIES  
INLINE**



**BAUER GEAR BF SERIES  
PARALLEL SHAFT**

*Configurable Products: Fast Flexible Build Options | Tailored to Your Application*

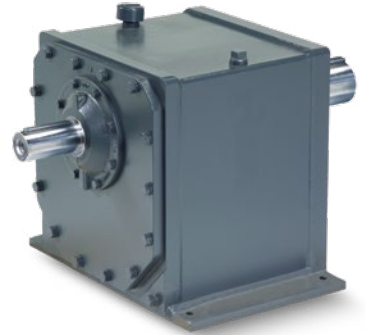
## SHAFT MOUNT GEAR DRIVES

Falk Quadrive sets the standard for reliability and durability, delivering the customer satisfaction and peace of mind that define true performance.



FALK™ QUADRIVE™

## INLINE GEAR DRIVES

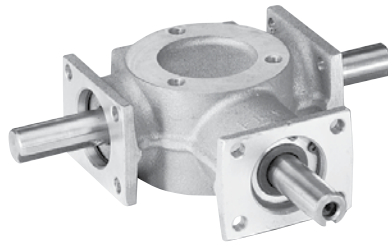


FALK ULTRAMAX™

## BEVEL GEAR



HUB CITY™  
CAST IRON BEVEL



HUB CITY  
ALUMINUM BEVEL



REXNORD  
PLANETGEAR™



BAUER GEAR BS SERIES  
WORM GEAR



BAUER GEAR  
HIFLEX SERIES



FALK BK & BF GEAR DRIVES  
WITH TA BUSHING

# Bearings

With of broad line of bearing solutions we offer industry-leading reliability, contamination protection, misalignment tolerance, and maintenance-saving design - providing longer equipment life, fewer unplanned failures, and lower total cost of ownership.

## MOUNTED BALL BEARINGS



### SEALMASTER™

Maximize uptime with reliable performance, excellent contamination protection, and fast, trouble-free replacements that reduce maintenance interruptions



### LINK-BELT™

Providing high capacity, high speed, and improved lubrication for reliable performance and less downtime.

### BROWNING™

Providing high capacity, high speed, and improved lubrication for reliable performance and less downtime.

## MOUNTED ROLLER BEARINGS



### REX™

Exceptional durability, higher load capacity, and superior misalignment handling, extending bearing and equipment life while reducing downtime



### LINK-BELT™

Delivering industry-leading misalignment capability, higher load ratings, and quick, field-changeable seals for long-lasting performance



### SEALMASTER™

Delivering dependable performance under heavy loads and misalignment, offering longer bearing life and quicker changeouts for reduced maintenance downtime



### BROWNING™

Delivering a stable, vibration-resistant solution that maintains smooth operation, reduces wear, and lowers long-term maintenance costs

## CAM FOLLOWERS



### MCGILL™

Delivering efficient, reliable performance with simplified installation, reduced maintenance time, and long-lasting durability for track roller applications.

# Belt Drives & Industrial Chain

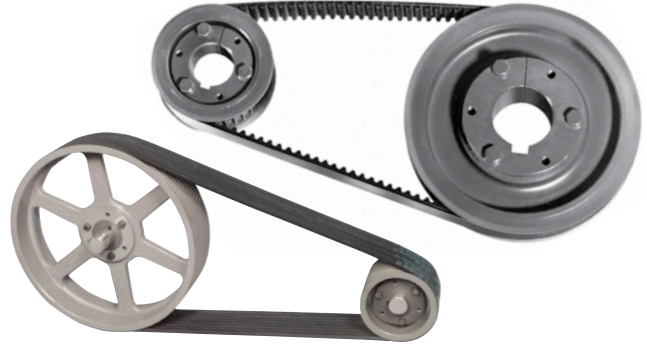
Built to perform across the entire drivetrain, our mechanical components and industrial chain solutions combine durability, efficiency, and low-maintenance design to deliver smoother operation, longer service life, and reduced downtime.

## BELT DRIVES



### BROWNING™

Smoother, more efficient power transmission with reduced vibration and longer service life, resulting in more uptime and lower operating costs



### TB WOOD'S™

Higher horsepower capacity and longer belt life, enabling users to run smaller, lighter, more efficient drive systems with less maintenance

## ROLLER CHAIN



### BROWNING

Smooth, efficient power transfer with reduced stretch and wear, helping users minimize downtime and extend service intervals



### LINK-BELT™

Longer life, lower maintenance, and reliable performance resulting in reduced downtime and lower operating costs



### MORSE™

Maximum durability, higher horsepower capability, and significantly longer chain life, reducing maintenance costs and improving reliability

## ENGINEERED STEEL CHAIN



### REXPRO™

Patented field connection allows for a safer, faster and easier chain assembly by eliminating the need for heavy tools and reducing time in potentially hazardous elevator conditions

# Couplings

Standard coupling options ensure applications have a longer life, fewer failures, less maintenance, easier servicing, and lower ownership cost - all while improving the reliability and productivity of the entire system.

## ELASTOMERIC COUPLINGS



### REXNORD™ OMEGA™

Unmatched durability and uptime provides up to 2–4× longer life and far higher torque capacity than rubber based competitor tire couplings



### REXNORD VIVA™

Significantly higher torque density and superior chemical resistance, providing a smaller, longer lasting alternative to traditional compact tire couplings



### FALK™ WRAPFLEX™

Heavy-duty performance with a replace in place element that requires no lubrication or realignment



### TB WOOD'S™ L-JAW

Fail safe, no lube performance while offering full interchangeability



### TB WOOD'S™ SURE-FLEX PLUS™

Last up to three times longer and deliver 30% more torque than competing sleeve couplings, providing dramatically lower maintenance costs and longer equipment life

## GEAR COUPLINGS



### KOP-FLEX™ SERIES H

Provides greater misalignment capability and larger bore capacities than typical gear couplings, making it a more robust and cost efficient choice for high torque drivetrains



### FALK LIFELIGN™

Reduces lubrication and maintenance needs with Long Term Grease and triple crowned teeth, outperforming competitor gear couplings in torque capacity and equipment protection

## GRID COUPLINGS



### FALK STEELFLEX™

Delivers far longer fatigue life and up to five year lubrication intervals, substantially reducing downtime compared to competitors' frequently serviced grid couplings

## DISC COUPLINGS



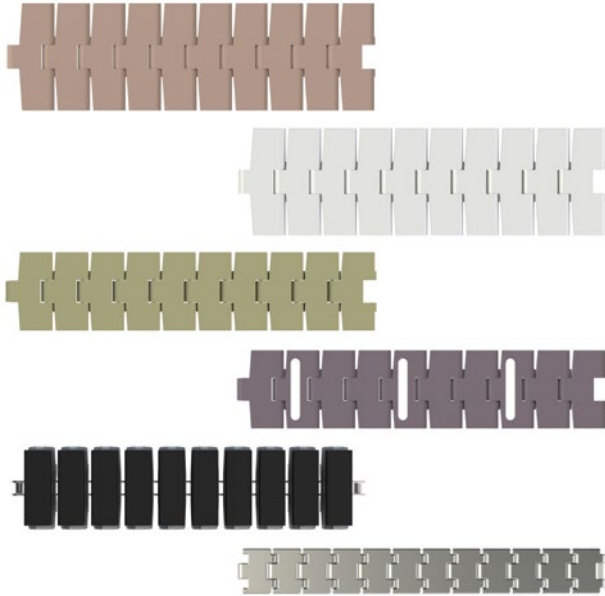
### THOMAS™ DISC

Provides a lower cost, zero lubrication, all metal solution for high speed machinery, while still delivering reliable misalignment handling

# Conveying

Conveying solutions engineered for reliability and performance - maximizing uptime, boosting throughput, and minimizing maintenance. With smooth, consistent product handling built in, you can expect safer operations and measurable efficiency gains across your facilities.

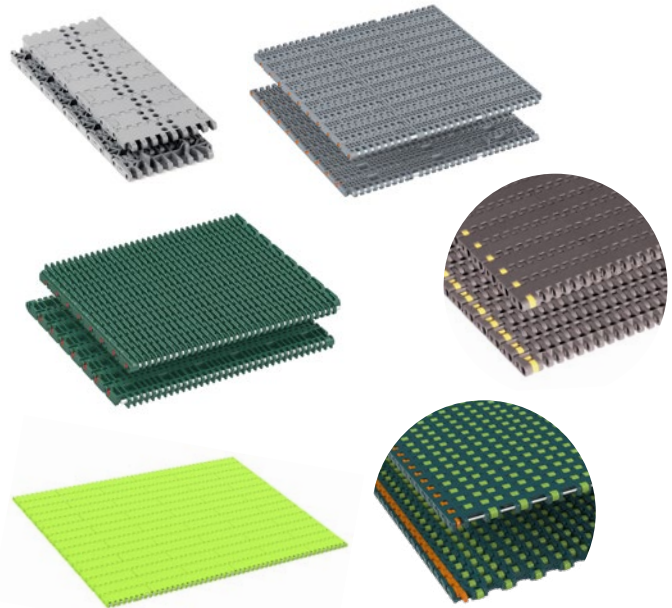
## CONVEYING CHAINS & BELTS



### REXNORD™ TABLETOP™ CHAIN

(815, 820, 821, 879, 880, 882, and 1873 Series)

Provides smooth, precise conveyance of containers and packages at higher speeds offering excellent durability and performance to help reduce product tipping, minimize downtime, maintain high line efficiency and support sustainability goals in the food, beverage and light duty material handling industries



### REXNORD MATTOP™ CHAIN

(1000, 1005, 1104, 1500, 5930, 6400, 6990, 7700, and 8500 Series)

Delivers versatile conveying solutions with multiple modular surface styles and materials to improve container stability, increase throughput and support sustainability goals in case and container handling applications in the food and beverage industries

## CONVEYOR COMPONENTS



### VALU GUIDE™ WEAR STRIPS AND GUIDE RAILS

Offers guide rail, wear strips and bead wall guides for stable, smooth, low-friction container handling while reducing downed containers, container damage, and downtime. Works in combination with Rexnord TableTop and MatTop products to support sustainability goals

### VALU GUIDE ACCESSORIES

Provides full complement of brackets, clips, levelers, transfer plates and bearings that work seamlessly with Rexnord conveyor chains and belts and other Valu Guide rail and wear components for optimized conveyor performance



# At Regal Rexnord, we are committed to creating a better tomorrow through continuous innovation, sustainability, and customer success

As a global leader in highly engineered motion control systems, air moving solutions, and power transmission components we offer sustainable, innovative solutions that ensure efficiency, reliability, and performance.

**Integrity, responsibility, and a passion to win is the foundation of who we are.** We value our associates, creating a diverse, engaged, and inclusive work environment that drives innovation and excellence. As your trusted advisor we offer unparalleled expertise and support, helping to unlock peak performance and build stronger businesses. Whether through cutting-edge technology or comprehensive service offerings, Regal Rexnord is proud to be a reliable partner in your progress.

We have deliberately curated our portfolio to better serve the evolving needs of our customers and stakeholders through the merger of Regal Beloit and Rexnord PMC, as well as the acquisition of Altra Industrial Motion. Our broad

portfolio of components and condition monitoring solutions empower customers to build smarter factories, improve operational efficiency, and lead the future of manufacturing.

With a global presence and decades of deep industry expertise, Regal Rexnord is uniquely positioned to provide comprehensive, integrated solutions that enhance performance at every level. From design and sourcing to installation and condition monitoring, our expert teams are dedicated to optimizing your operations and supporting your long-term success.

Together through innovation, collaboration, and a shared vision for a brighter future, **we create a better tomorrow.**



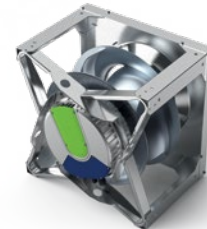
## OPERATING SEGMENTS



**AUTOMATION & MOTION CONTROL**



**INDUSTRIAL POWERTRAIN SOLUTIONS**



**POWER EFFICIENCY SOLUTIONS**

Regal Rexnord provides you with unparalleled support and expertise through our team of:



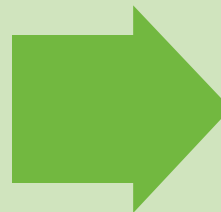
**1200+**  
SALES PROFESSIONALS



**800+**  
CUSTOMER CARE ASSOCIATES

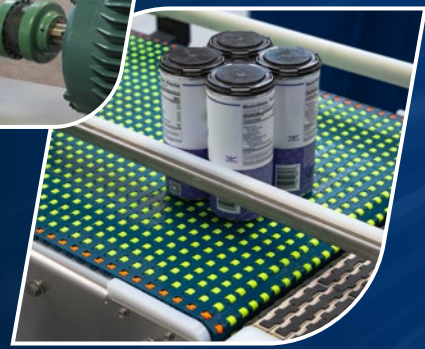
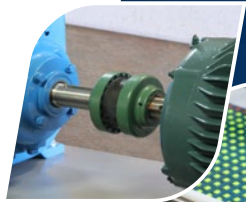
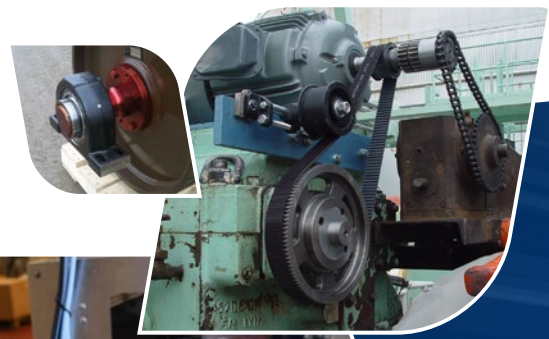


**1800+**  
EXPERT ENGINEERS



Creating a comprehensive team of trusted advisors across:

- 30** FOCUSED INDUSTRIES
- 100+** UNIQUE APPLICATIONS
- 60** TRUSTED BRANDS
- 19** PRODUCT CATEGORIES
- 100+** PRODUCTS



## Regal Rexnord

Customer Service: 800-626-2120

Technical Service: 800-626-2093

[CustomerService.PTSolutions@regalrexnord.com](mailto:CustomerService.PTSolutions@regalrexnord.com)

[regalrexnord.com](http://regalrexnord.com)

The proper selection and application of products and components, including assuring that the product is safe for its intended use, are the responsibility of the customer. To view our Application Considerations, please visit <https://www.regalrexnord.com/Application-Considerations>.

To view our Standard Terms and Conditions of Sale, please visit <https://www.regalrexnord.com/Terms-and-Conditions-of-Sale> (which may redirect to other website locations based on product family).

"Regal Rexnord" is not indicative of legal entity. Refer to product purchase documentation for the applicable legal entity.

Regal Rexnord, Bauer, Boston Gear, Browning, Cambridge, Electra Gear, Falk, Grove Gear, Hub City, Ironman, Kop-Flex, Lifelign, Link-Belt, McGill, Morse, Omega, Planetgear, Quadrive, Rex, Rexnord, Rexnord Viva, RexPro, Rollway, Sealmaster, Steelflex, Sure-Flex, Tabletop, TB Wood's, Thomas, Ultramax, Ultramite, Valu Guide and Wrapflex are trademarks of Regal Rexnord Corporation or one of its affiliated companies.

© 2026 Regal Rexnord Corporation, All Rights Reserved. MCB-12591-C-EN-US 03/26

