



# Metals Industry Solutions

COMPREHENSIVE SOLUTIONS ENGINEERED TO  
ADDRESS TOP CHALLENGES IN METALS PRODUCTION





INNOVATION



ESG

**INDUSTRY  
OBJECTIVES**



SAFETY



RESILIENCE

## REGAL REXNORD **MISSION**

Regal Rexnord is committed to creating a better tomorrow with sustainable solutions that power, transmit and control motion. For us, this means creating innovative solutions that focus on both customer needs and our commitment to sustainability.

We understand the goals and challenges that metals manufacturers face. Our wide range of powertrain product solutions aim to maximize equipment performance and enhance operating profits by reducing energy cost.





# METALS INDUSTRY SOLUTIONS

As industry leaders in power transmission products, Regal Rexnord has been helping metal mill equipment manufacturers and metal producers worldwide achieve great success by increasing efficiency while reducing costs and downtime.

Our brands provide a comprehensive offering of mill spindles, couplings, universal joints, gear motors, speed reducers, torque-limiting devices, clutches and brakes, and equipment health monitoring to meet the specific needs of the metals industry. Regal Rexnord products are designed to withstand harsh mill environments including dirt, dust, and high temperatures, while providing exceptional personnel safety and equipment protection.

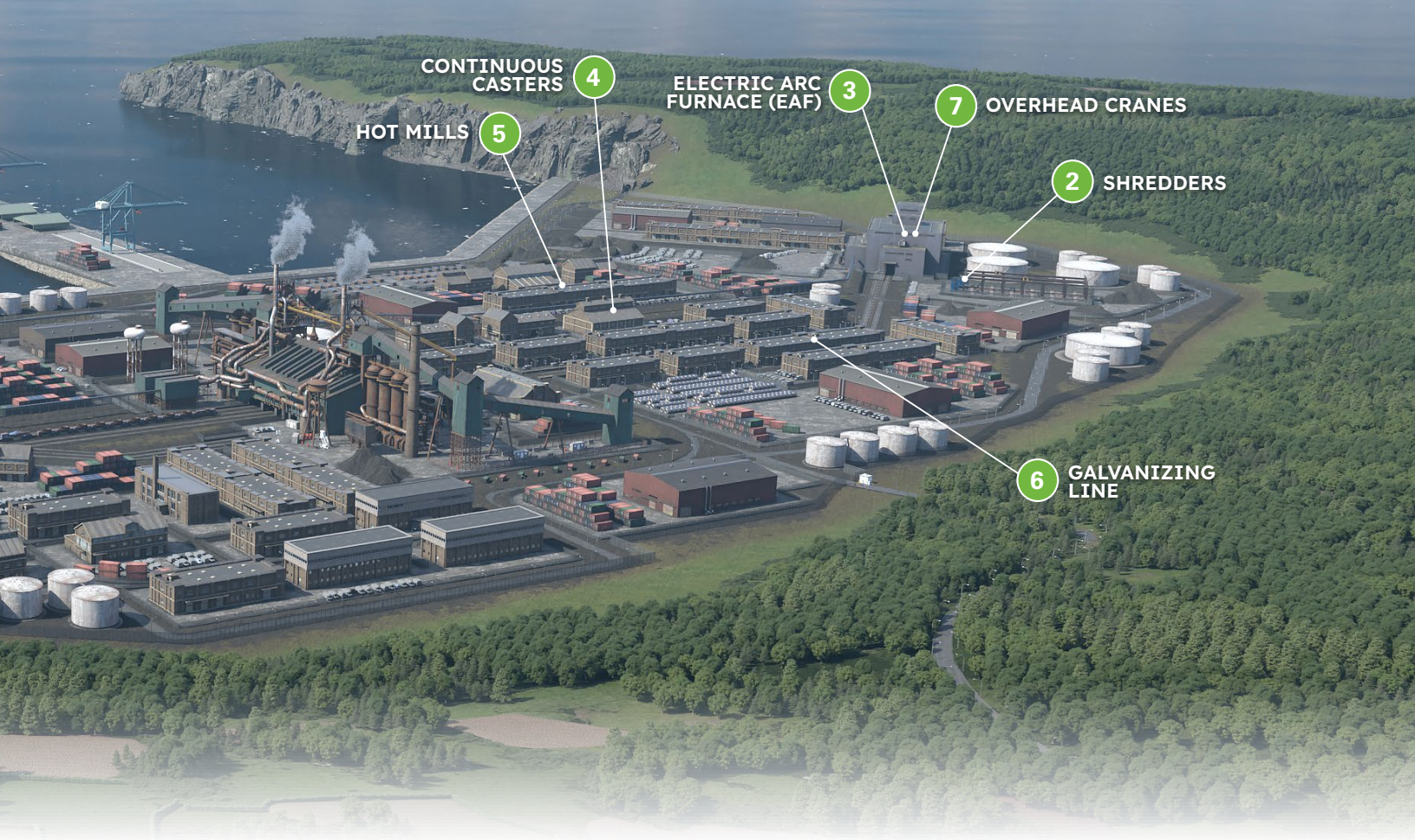
Your challenges are our top priority. Whether you are in the business of recycling or processing, shredding, or producing metal, we understand that every moment counts. Downtime for key equipment can significantly impact your productivity and profitability. Regal Rexnord's extensive list of rugged and reliable products combined Powertrain Solutions are backed by global design engineering, field service, and rebuild/repair teams – ensuring prompt assistance precisely when and where you need it.





Regal Rexnord™ Products	Coke Ovens	Shredders	Electric Arc Furnace (EAF)	Continuous Casters	Hot Mills	Galvanizing Line	Overhead Cranes
	1	2	3	4	5	6	7
<b>BEARINGS</b>							
Duralon™ Filament Bearings					●	●	●
Rex™ & Link-Belt™ Mounted Spherical Roller Bearings	●	●	●	●	●	●	●
Rollway™ Unmounted Bearings	●	●	●	●	●	●	●
Sealmaster™ Mounted Ball Bearings	●	●	●	●	●	●	●
Sealmaster Mounted Tapered Roller Bearings	●	●	●	●	●	●	●
<b>CLUTCHES &amp; BRAKES</b>							
Bibby™ Turboflex™ Torque Limiters		●			●		
Rexnord™ Autogard™ Torque Limiters		●		●	●		
Stromag™ Electromagnetic Brakes					●	●	●
Stromag FAV, SAB, SDB Thruster Brakes						●	●
Stromag PHS Hydraulic Buffers							●
Stromag SH/SHC Emergency Brakes + SHPU Hydraulic power units							●
Stromag Rotary Limit Switches				●			●
Twiflex™ Caliper Brakes					●	●	
Twiflex TLB Turning Locking Braking Systems		●					
Wichita™ Pneumatic Clutches					●	●	
Wichita Pneumatic Spring Set Brakes					●	●	





	Coke Ovens	Shredders	Electric Arc Furnace (EAF)	Continuous Casters	Hot Mills	Galvanizing Line	Overhead Cranes
Regal Rexnord™ Products	1	2	3	4	5	6	7
<b>COUPLINGS</b>							
Ameridrives™ Americardan™ Universal Joints/U-Joints		●		●	●	●	
Ameridrives Amerigear™ Gear Couplings	●	●	●	●	●	●	●
Ameridrives Amerigear Mill Spindles				●	●	●	
Falk™ Steelflex™ Grid Couplings	●		●	●	●	●	●
Falk TrueTorque™ Fluid Couplings	●						
Jaure™ Barflex™ TCBR Barrel Couplings							●
Jaure Spindles (Europe & Asia)				●	●	●	
Kop-Flex™ Max-C™ Resilient Couplings	●	●		●	●	●	●
Kop-Flex Series H and Jaure MT Gear Couplings (Europe Only)	●	●	●	●	●	●	●
Rexnord™ Omega™, Viva™, & Falk Wrapflex™ Elastomeric Couplings	●	●		●	●	●	
<b>GEARING</b>							
Bauer™ BK Series Bevel Geared Motor		●			●		●
Bauer BF Series Shaft Mounted Geared Motor					●	●	●
Falk V-Class™ Gear Drives		●			●	●	●
Falk UltraMax™ Concentric Gear Drives		●			●	●	
Rexnord Planetgear™					●		
<b>INTELLIGENT SOLUTIONS</b>							
Perceptiv™ Condition Based Monitoring Systems		●		●	●	●	●



# Metals Industry Solutions

Proven reliability, dependable expertise, and broad range of options including:

## BEARINGS



Duralon™ Filament Bearings



Link-Belt™ & Sealmaster™ Mounted Ball Bearings



Rex™ & Link-Belt Mounted Spherical Roller Bearings



Rollway™ Unmounted Bearings



Sealmaster Mounted Tapered Roller Bearings

## GEARING & GEARMOTORS



Bauer™ BK Series Bevel Geared Motor



Bauer BF Series Shaft Mounted Geared Motor



Falk™ V-Class™ Gear Drives



Falk UltraMax™ Concentric Gear Drives



Rexnord™ Planetgear™

## COUPLINGS



Ameridrives™ Americardan™ U-Joints



Ameridrives Amerigear™ Gear Couplings



Ameridrives Amerigear Mill Spindles



Falk Steelflex™ Grid Couplings



Falk True Torque™ Fluid Couplings



Falk Wrapflex™ Elastomeric Couplings



Jaure™ Barflex™ TCBR Barrel Couplings



Jaure MT Series Gear Couplings (Europe Only)



Jaure Gear Spindles



Kop-Flex™ MAX-C™ Resilient Couplings



Kop-Flex Series H Gear Couplings



Rexnord Omega™ Elastomeric Couplings



Rexnord Viva™ Elastomeric Couplings

## CLUTCHES & BRAKES



Bibby™ Turboflex™ Torque Limiters



Rexnord Autogard™ Torque Limiters



Stromag™ Electromagnetic Brakes



Stromag FAV, SAB & SDB Thruster Brakes



Stromag PHS Hydraulic Buffers



Stromag SH/SHC Emergency Brakes



Stromag Rotary Limit Switches



Twiflex™ Caliper Brakes



Twiflex Turning Locking Braking (TLB) System



Wichita™ LI Spring Set Brakes



Wichita Standard Vent Clutch

## SERVICES



Perceptiv™ Condition Based Monitoring Systems



Industrial Services, Repair, and Refurbishment



# At Regal Rexnord, we are committed to creating a better tomorrow through continuous innovation, sustainability, and customer success

As a global leader in highly engineered motion control systems, air moving solutions, and power transmission components we offer sustainable, innovative solutions that ensure efficiency, reliability, and performance.

**Integrity, responsibility, and a passion to win is the foundation of who we are.** We value our associates, creating a diverse, engaged, and inclusive work environment that drives innovation and excellence. As your trusted advisor we offer unparalleled expertise and support, helping to unlock peak performance and build stronger businesses. Whether through cutting-edge technology or comprehensive service offerings, Regal Rexnord is proud to be a reliable partner in your progress.

We have deliberately curated our portfolio to better serve the evolving needs of our customers and stakeholders through the merger of Regal Beloit and Rexnord PMC, as well as the acquisition of Altra Industrial Motion. Our broad

portfolio of components and condition monitoring solutions empower customers to build smarter factories, improve operational efficiency, and lead the future of manufacturing.

With a global presence and decades of deep industry expertise, Regal Rexnord is uniquely positioned to provide comprehensive, integrated solutions that enhance performance at every level. From design and sourcing to installation and condition monitoring, our expert teams are dedicated to optimizing your operations and supporting your long-term success.

Together through innovation, collaboration, and a shared vision for a brighter future, **we create a better tomorrow.**



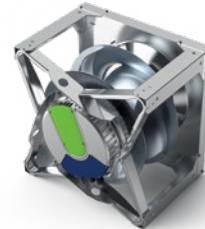
## OPERATING SEGMENTS



**AUTOMATION & MOTION  
CONTROL**



**INDUSTRIAL POWERTRAIN  
SOLUTIONS**



**POWER EFFICIENCY  
SOLUTIONS**

Regal Rexnord provides you with unparalleled support and expertise through our team of:



**1200+**  
SALES  
PROFESSIONALS



**800+**  
CUSTOMER CARE  
ASSOCIATES



**1800+**  
EXPERT  
ENGINEERS



Creating a comprehensive team of trusted advisors across:

**30** FOCUSED INDUSTRIES  
**100+** UNIQUE APPLICATIONS  
**60** TRUSTED BRANDS  
**19** PRODUCT CATEGORIES  
**100+** PRODUCTS

REGAL REXNORD

# POWERTRAIN SOLUTIONS

You have challenges. **We have solutions.**

To solve your critical challenges, it is essential to partner with a **global company** with **local resources**, **reputable brands**, and a **proven history** of delivering cost-efficient solutions.



**SIMPLIFIED  
SUPPLY CHAIN**



**TRUSTED  
ADVISOR**



**APPLICATION  
ENGINEERING**



**GLOBAL  
PRESENCE**



**CONTINUOUS  
INNOVATION**

*Any Application, Any Challenge.*

Get started at [Metals.RegalRexnord.com](https://Metals.RegalRexnord.com)

## Regal Rexnord

Customer Service: 800-626-2120

Technical Service: 800-626-2093

[CustomerService.PTSolutions@regalrexnord.com](mailto:CustomerService.PTSolutions@regalrexnord.com)

[regalrexnord.com](https://regalrexnord.com)

The proper selection and application of products and components, including assuring that the product is safe for its intended use, are the responsibility of the customer. To view our Application Considerations, please visit <https://www.regalrexnord.com/Application-Considerations>.

To view our Standard Terms and Conditions of Sale, please visit <https://www.regalrexnord.com/Terms-and-Conditions-of-Sale> (which may redirect to other website locations based on product family).

"Regal Rexnord" is not indicative of legal entity.

Regal Rexnord, Americardan, Ameridrives, Amerigear, Autogard, Barflex, Bauer, Bibby, Duralon, Falk, Jaure, Kop-Flex, Link-Belt, Max-C, Omega, Perceptiv, Planetgear, Rex, Rexnord, Rollway, Sealmaster, Steelflex, Stromag, TrueTorque, Turboflex, Twiflex, UltraMax, V-Class, Viva, Wichita, and Wrapflex are trademarks of Regal Rexnord Corporation or one of its affiliated companies.

© 2024, 2025 Regal Rexnord Corporation, All Rights Reserved. MCB-MB0178-C-EN-US 11/25

Scan to visit  
[rrx.link/metals-solutions](https://rrx.link/metals-solutions)



 **RegalRexnord™**