



V-Belt Drive Solutions for Forestry & Wood Products Applications



Browning™

TB WOOD'S™



TB WOOD'S™ BELTED DRIVES PROVIDE SUPERIOR PERFORMANCE IN THE FORESTRY AND WOOD PRODUCTS MARKETS

Industry-leading TB Wood's sheaves and belts have become a preferred choice for many forestry and wood products OEMs and end users. Rugged, made-to-order sheaves and premium belts from TB Wood's are designed to provide long service life in a variety of tough applications including chippers, band saws and pellet mills.

TB Wood's has been pouring quality iron since 1857 with a maximum sheave capacity of 107-inch diameter. Experienced application engineers provide optimum designs to meet specific application requirements. Our integrated foundry and machining center allows us to provide fast response time for made-to-order products. Superior quality iron provides longer sheave life, resulting in less frequent replacement. Less maintenance & downtime equals lower total cost of ownership.



Experience the TB Wood's Difference...

Service

- Full line of QD sheaves, bushings, and belts
- Made-to-order solutions designed daily
- Integrated foundry and machine shop for quick turnaround
- Industry-leading delivery... because you can't afford to wait!

Engineering Support

- Best-in-class online selection tool
- Application support from experienced professionals (over 125 years combined)
- The right drive for the application..."The first time, everytime!"

Responsiveness

- Unmatched customer service experience & product knowledge
- Timely responses to phone and email inquiries

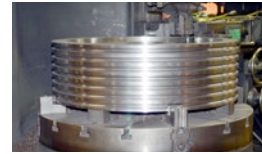
Large selection of standard size sheaves available for all sizes and types of chippers

All standard TB Wood's narrow and classical V-belt sheaves are designed to ensure that they are capable of delivering the dependable performance in smaller HP chipper and larger mill applications.

All models are available with convenient Sure-Grip™ QD type bushings.

Thousands of SKUs on the shelf and ready to ship when disasters strike

We're set up to meet the often rapidly changing demands of our chipper OEM customers. We understand that orders can quickly change when disasters hit such as hurricanes.

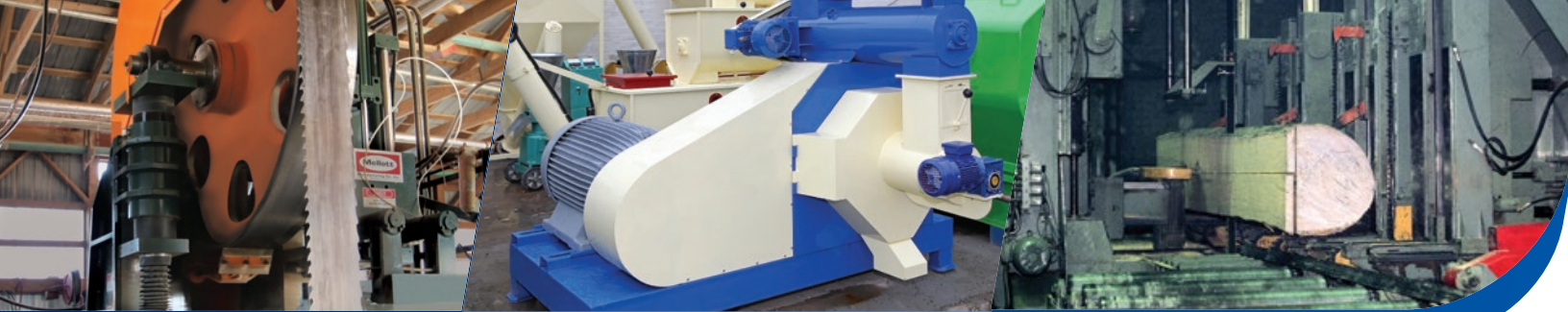


Made-to-Order (MTO) capabilities

- Special diameters to achieve optimum speeds
- High-grade cast iron or ductile iron for high speeds
- Private-branded sheaves with OEM brands/part numbers
- Special hubs, grooves and diameters
- Flywheels
- "Fastrac" delivery available for breakdown situations

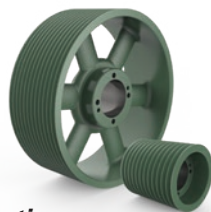
ASK ABOUT BROWNING™ TORQTITAN V-BELTS

- No re-tensioning after installation
- 30% more horsepower
- Smaller drive requirements



APPLICATION CASE STUDIES

Chippers/Grinders

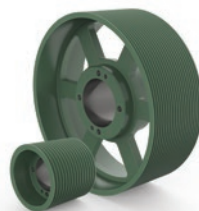


Situation

A major manufacturer of commercial wood chippers had experienced the complete failure of an imported belted drive installed as a replacement on a chipper from a product line that it recently acquired.

Solution

- Engineering analysis of failed competitor belted drive
- Recommendation for more robust TB Wood's solution: Paired 12-groove ductile iron sheaves with expanded capacity 8VP belts



Situation

A large chipper and grinder OEM was having service issues with their current belted drive supplier.

Solution

- Customer visit to foundry and machine shop
- Superior levels of customer service and engineering (design) support
- RFQ package consisted of special MTO 5V groove sheaves, ranging in size from 11.8" dia. to 40" dia. Sheaves varied in width from 10 to 20 grooves.



Situation

A leading brush chipper manufacturer required reliable sheaves for use on several of their smaller HP models.

Solution

- Pairs of mated, 3V groove Ultra-V sheaves in various diameters were supplied to meet the requirements of the different HP chipper models
- Fine grain, high tensile cast iron construction for long service life under harsh conditions
- Sure-Grip™ bushings were supplied for the proper shaft diameters

Pellet Mills

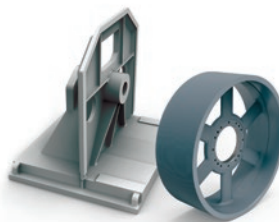


Situation

A leading manufacturer of pelletizing equipment, located in the Western U.S., was looking for particular custom-sized sheaves for use on its larger belt-driven pellet mills.

Solution

- OEM contacted TB Wood's based on their reputation as the "Large Sheave Experts"
- Made-To-Order (MTO) 42 in. dia. and mated 9.4 in. dia., 14-groove gray iron sheaves



Situation

A major global manufacturer of biomass machinery and process plants, needed a more reliable foundry for base castings used on its wood pellet mills.

Solution

- Made-To-Order (MTO) 60 in. dia., 30-groove, Class 35 gray iron sheaves
- 5 ft. wide x 6 ft. high, 6,000 lb., Class 30 gray iron base castings
- Re-engineered, economical casting design saved manufacturing and machining costs



Situation

Mellott Manufacturing®, a major log and lumber handling OEM needed durable wheels for use on a new industrial bandsaw development featuring a 12 in. wide by 40 ft. long bandsaw blade.

Solution

- Made-to-Order (MTO) 11-1/2 in. wide, 72 in. dia. ductile iron wheels
- Paired, flat-face, dynamically balanced wheels

* Mellott Manufacturing is believed to be the trademark and/or trade name of Mellott Company, LLC, and is not owned or controlled by Regal Rexnord Corporation or its affiliates.



Browning[™]

TB WOOD'S[™]

Regal Rexnord

tbwoods.com

440 North Fifth Avenue
Chambersburg, PA 17201 - USA
888-829-6637

regalrexnord.com

The proper selection and application of products and components, including assuring that the product is safe for its intended use, are the responsibility of the customer. To view our Application Considerations, please visit <https://www.regalrexnord.com/Application-Considerations>.

To view our Standard Terms and Conditions of Sale, please visit <https://www.regalrexnord.com/Terms-and-Conditions-of-Sale> (which may redirect to other website locations based on product family).

"Regal Rexnord" is not indicative of legal entity. Refer to product purchase documentation for the applicable legal entity.

Regal Rexnord, Browning, Sure-Grip and TB Wood's are trademarks of Regal Rexnord Corporation or one of its affiliated companies.

© 2021, 2025 Regal Rexnord Corporation, All Rights Reserved. MCB-P-8882-C-EN-US 07/25

 **RegalRexnord**[™]