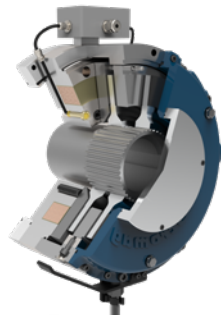


Power Transmission Solutions for Above-Deck Marine Applications



FORMSPRAG CLUTCH™

INDUSTRIAL CLUTCH™

TWIFLEX™

JAURE™

Stromag™

SVENDBORG BRAKES™

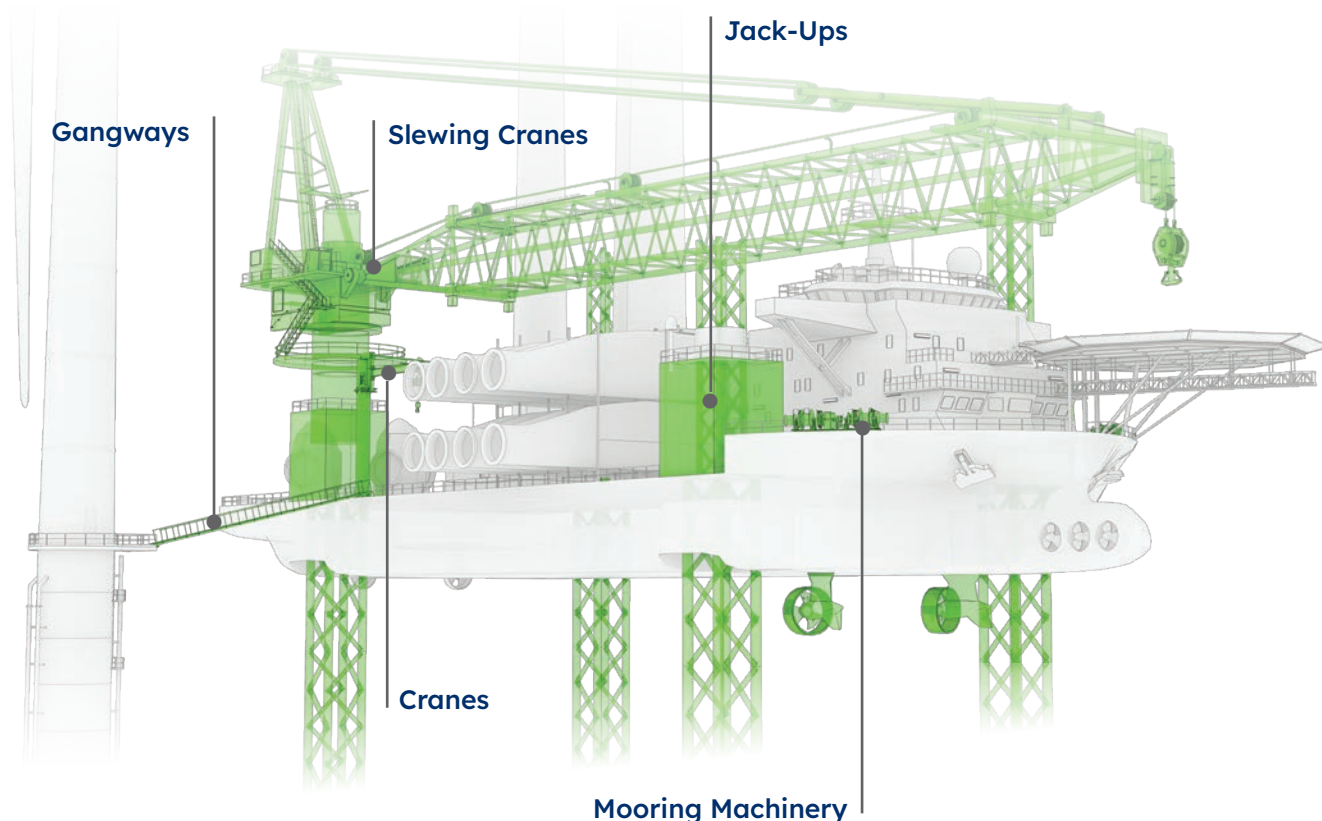
WICHITA CLUTCH™



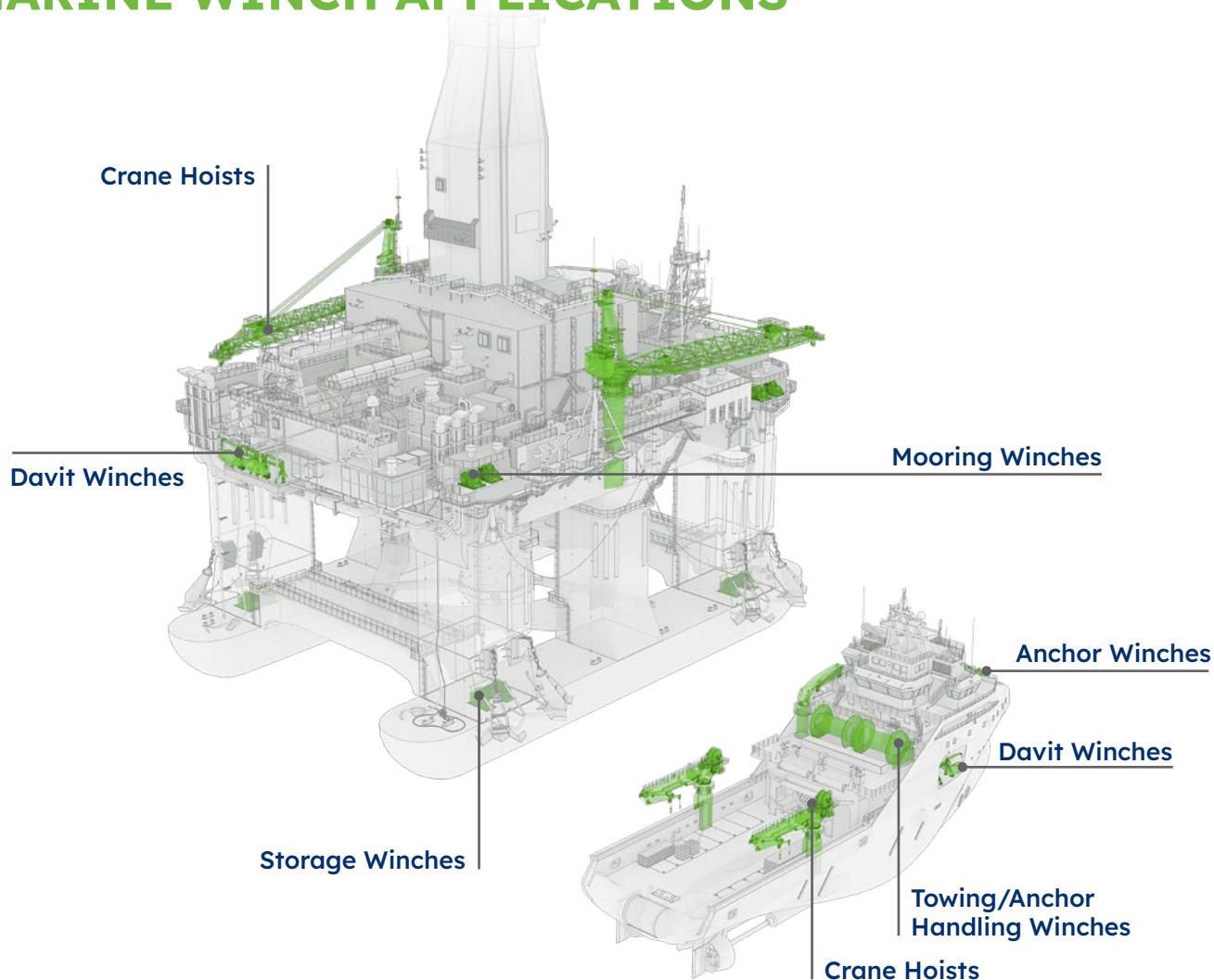
Solutions for ABOVE DECK APPLICATIONS

Rugged Regal Rexnord™ clutches, brakes, and couplings are designed to meet the tough application requirements for vessel winches, jack-up systems, and crane/hoist systems.

An extensive offering of hydraulic, pneumatic, and electric caliper brakes, high energy multi-plate clutches and brakes, backstopping clutches, and shaft couplings can be utilized for any type of winch drive configuration. Regal Rexnord braking solutions are used on the low-speed shaft such as the hoist drum flange, the high-speed shaft on the back of the drive motor, or as a wet brake inside the gearbox. While a wide range of standard catalog products is available, many products are routinely engineered to meet specific customer performance requirements.



Regal Rexnord™ brands provide extremely reliable power transmission solutions for **MARINE WINCH APPLICATIONS**



As a leading multinational designer and producer of electromechanical power transmission equipment, Regal Rexnord offers a wide range of products ideally suited for marine winch applications where reliability and accuracy are necessary to avoid costly downtime, assure safe operation, and provide consistent performance.

Global Footprint

Brakes, clutches, and couplings from well-recognized Regal Rexnord brands are hard at work on marine winches around the world. With engineering and manufacturing capabilities strategically located globally, Regal Rexnord brands provide comprehensive and timely support to many prominent marine winch OEMs and end users.

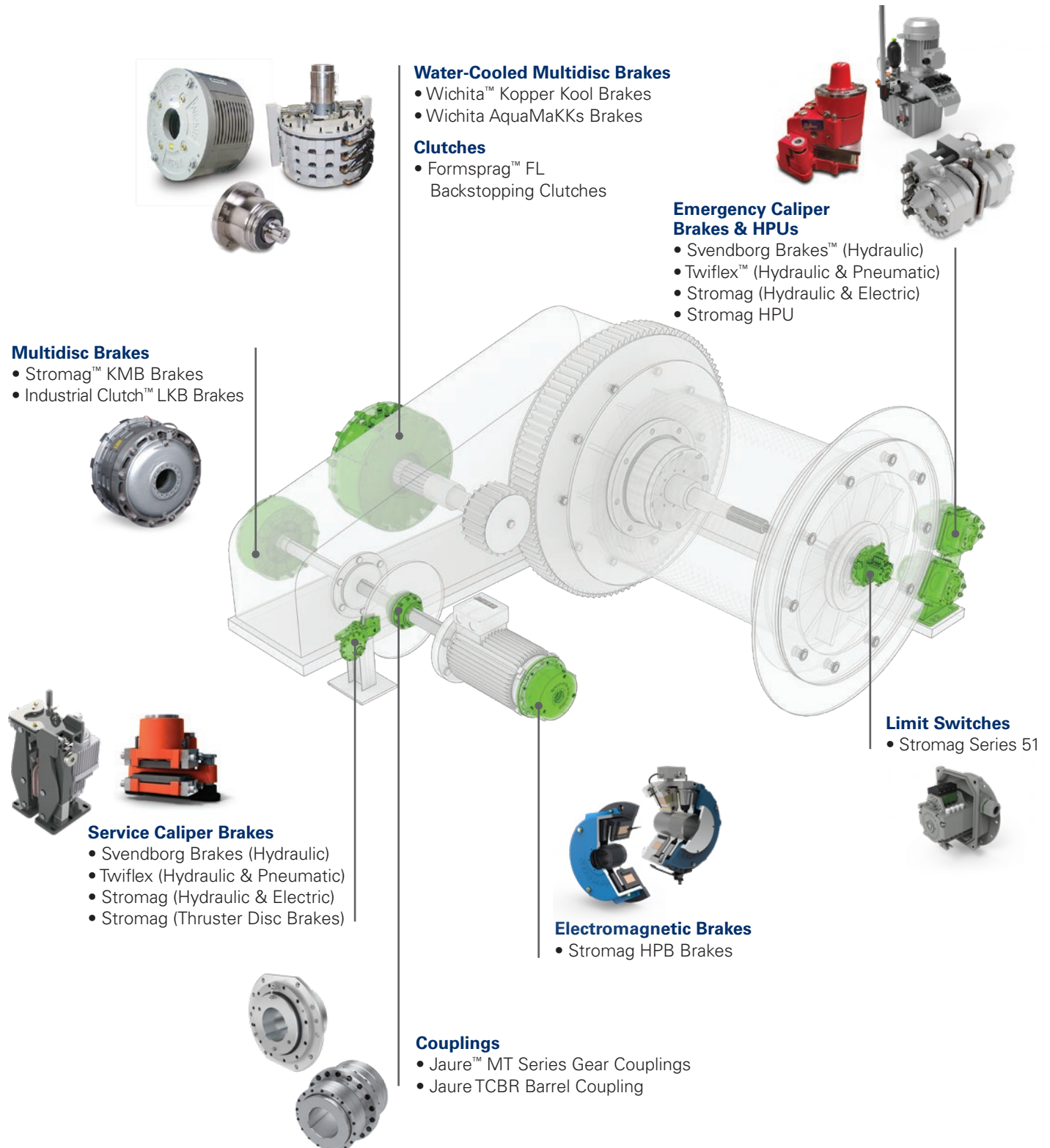
Marine Winch Market Expertise

Over many decades, our customers have come to rely on our extensive marine winch market experience, solution-based engineering, quality manufacturing, and exceptionally reliable product performance.

Regal Rexnord brands are able to supply products to meet requirements of marine societies including:



Standard or custom product solutions are available to meet the performance requirements of all types of **MARINE WINCH DESIGNS**



ABOVE DECK APPLICATIONS

JACK-UPS

WINCHES

Jack-Ups

Positioning, Abandonment,
& Recovery

Anchor

Towing

Mooring

Davits

Gangways

Regal Rexnord Products

COUPLINGS

Lubricated Couplings

Jaure™ MT Gear Coupling



Jaure Barflex™ TCBR Barrel Coupling



Jaure Heavy Duty MT-HD Marine Gear Coupling



BRAKES

Caliper Disc Brakes

Svendborg Brakes™ BSF Passive Hydraulic Caliper Brakes (BSFH500 & BSFI3000)



Plate Brakes

Stromag™ HPB Electromagnetic Passive Plate Brakes



Stearns™ SAB 82,000 & 86,000 Active Electromagnetic Brakes



Stearns AAB 361 Passive Electromagnetic Brakes



Wichita Clutch™ AquaMaKKs Passive Water-Cooled Multiplate Brakes



Wichita Clutch SSB AirMaKKs Passive Pneumatic Multiplate Brakes



Industrial Clutch™ LKB Passive Pneumatic Multiplate Brakes



CLUTCHES

Multiplate Clutches

Wichita Clutch LI Low Inertia Pneumatic Multiplate Clutches



Wichita Clutch HC Dry Multiplate Clutches



Wichita Clutch SV Standard Vent Pneumatic Multiplate Clutches



Wichita Clutch Kopper Kool Water-Cooled Passive Multiplate Clutches



Bi-Directional & Overrunning Clutches

Stieber™ GFR Overrunning Clutches



Formsprag™ Clutch FSO Overrunning Clutches



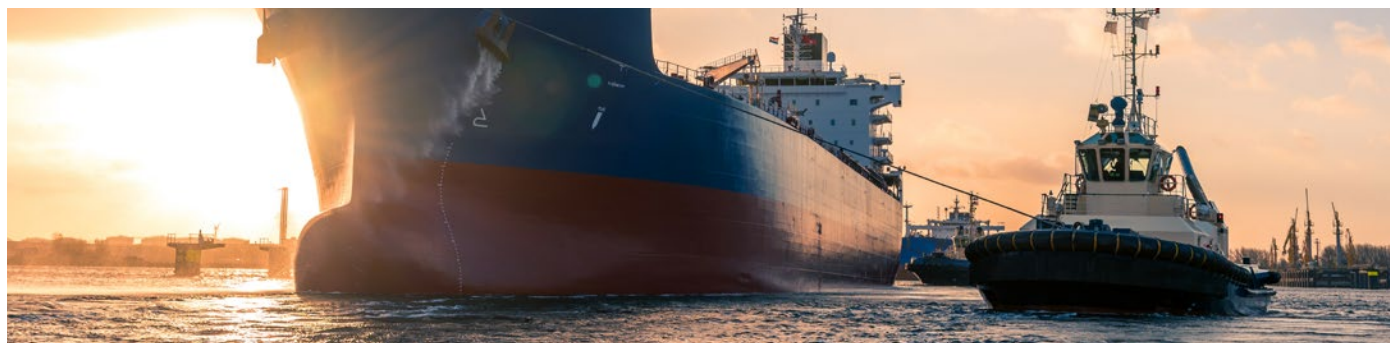
Formsprag Clutch FL Bi-Directional Clutches



CONTROLS, POWER SUPPLIES, & LIMIT SWITCHES

Limit Switches

Stromag Series 51 Limit Switches



ABOVE DECK APPLICATIONS

CRANES

Hoist (Low-Speed)
Motor (High-Speed)
Traveling
Slewing

Regal Rexnord Products

Lubricated Couplings

Jaure™ Barflex™ TCBR Barrel Coupling



Non-Lubricated Couplings

Jaure MTFS Gear Coupling with Brake Disc



Jaure Lamidisc™ Disc Coupling



Jaure Jauflex™ Elastomeric Coupling



BRAKES

Caliper Disc Brakes

Svendborg Brakes™ BSF Passive Hydraulic Caliper Brakes (BSFK500, BSFI300, BSFB600, & BSFI3000)



Stromag™ SH-Series Passive Hydraulic Caliper Brakes (SH9A, SH15, SH18B, SH25, & SH32)



Stromag SHD-Series Passive Hydraulic Caliper Brakes (SHD5 & SHD1)



Stromag TDXB-Series Passive Electrohydraulic Thruster Disc Brakes (TDXB 05, TDXB 1, & TDXB 2)



Plate Brakes

Stromag HPB Electromagnetic Active Plate Brakes



Wichita Clutch™ AquaMaKKs Passive Water-Cooled Multiplate Brakes



Stearns™ SAB 82,000 & 86,000 Active Electromagnetic Brakes



Stearns AAB 361 Passive Electromagnetic Brakes



Stromag NFF4F Electromagnetic Passive Multiplate Brakes



Wichita Clutch SSB AirMaKKs Passive Pneumatic Multiplate Brakes



CLUTCHES

Multiplate Clutches

Wichita Clutch LI Low Inertia Pneumatic Multiplate Clutches



Wichita Clutch Kopper Kool Water-Cooled Multiplate Clutches



CONTROLS, POWER SUPPLIES, & LIMIT SWITCHES

Limit Switches

Stromag Series 51 Limit Switches



Controls and Power Supplies

Svendborg Brakes Hydraulic Power Units



Svendborg Brakes Sobo™ IQ Soft Braking Controls





At Regal Rexnord, we are committed to creating a better tomorrow through continuous innovation, sustainability, and customer success

As a global leader in highly engineered motion control systems, air moving solutions, and power transmission components we offer sustainable, innovative solutions that ensure efficiency, reliability, and performance.

Integrity, responsibility, and a passion to win is the foundation of who we are. We value our associates, creating a diverse, engaged, and inclusive work environment that drives innovation and excellence. As your trusted advisor we offer unparalleled expertise and support, helping to unlock peak performance and build stronger businesses. Whether through cutting-edge technology or comprehensive service offerings, Regal Rexnord is proud to be a reliable partner in your progress.

We have deliberately curated our portfolio to better serve the evolving needs of our customers and stakeholders through the merger of Regal Beloit and Rexnord PMC, as well as the acquisition of Altra Industrial Motion.

Our broad portfolio of components and condition monitoring solutions empower customers to build smarter factories, improve operational efficiency, and lead the future of manufacturing.

With a global presence and decades of deep industry expertise, Regal Rexnord is uniquely positioned to provide comprehensive, integrated solutions that enhance performance at every level. From design and sourcing to installation and condition monitoring, our expert teams are dedicated to optimizing your operations and supporting your long-term success.

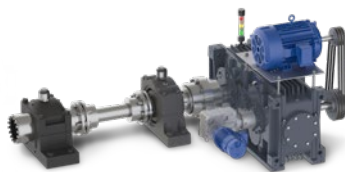
Together through innovation, collaboration, and a shared vision for a brighter future, **we create a better tomorrow.**



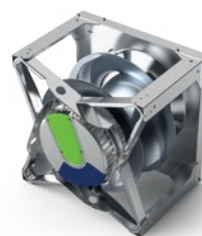
OPERATING SEGMENTS



**AUTOMATION & MOTION
CONTROL**



**INDUSTRIAL POWERTRAIN
SOLUTIONS**



**POWER EFFICIENCY
SOLUTIONS**

Regal Rexnord provides you with unparalleled support and expertise through our team of:



1200+
SALES
PROFESSIONALS



800+
CUSTOMER CARE
ASSOCIATES



1800+
EXPERT
ENGINEERS



Creating a comprehensive team of trusted advisors across:

30 FOCUSED INDUSTRIES
100+ UNIQUE APPLICATIONS
60 TRUSTED BRANDS
19 PRODUCT CATEGORIES
100+ PRODUCTS



FORMSPRAG CLUTCH™

INDUSTRIAL CLUTCH™

JAURE™

Stromag™

SVENDBORG BRAKES™

TWIFLEX™

WICHITA CLUTCH™

Regal Rexnord

[regalrexnord.com](https://www.regalrexnord.com) [marinemarketsolutions.com](https://www.marinemarketsolutions.com)

The proper selection and application of products and components, including assuring that the product is safe for its intended use, are the responsibility of the customer. To view our Application Considerations, please visit <https://www.regalrexnord.com/Application-Considerations>.

To view our Standard Terms and Conditions of Sale, please visit <https://www.regalrexnord.com/Terms-and-Conditions-of-Sale> (which may redirect to other website locations based on product family).

"Regal Rexnord" is not indicative of legal entity. Refer to product purchase documentation for the applicable legal entity.

Regal Rexnord, Barflex, Formsprag Clutch, Industrial Clutch, Jauflex, Jaure, Lamidisc, Sobo, Stearns, Stromag, Svendborg Brakes, Twiflex and Wichita Clutch are trademarks of Regal Rexnord Corporation or one of its affiliated companies.

© 2023, 2025 Regal Rexnord Corporation, All Rights Reserved. MCB-P-9010-C-EN-US 08/25

 **RegalRexnord™**