

RDBK

HIGH SPEED BACKSTOP

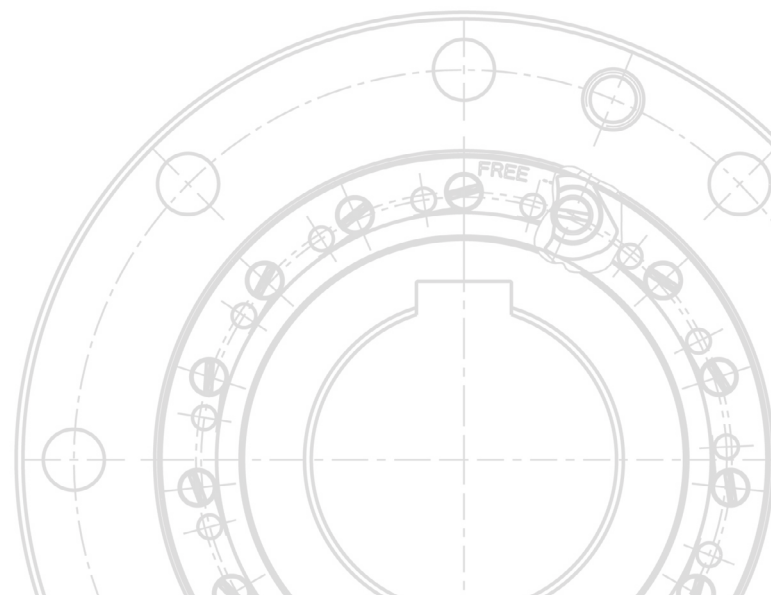


Torque Limiting/
Load Sharing
High Speed Backstop
Releasable Under Load

**High Torque Density
Reliable Functionality
...through innovative design**

PERFORMANCE FEATURES

- Up to 3.5 times more torque capacity within the same volume than other conventional designs
- Load sharing over several backstops
- The Stieber™ RDBK limiting/load sharing high speed backstop can really limit the stresses and protect your conveyor belt system



RDBK

HIGH SPEED BACKSTOP

The RDBK is a centrifugal lift-off sprag type backstop which is designed for use on the high speed or intermediate shaft. With an internal torque limiter, the RDBK is designed for the use on large inclined conveyors, where the release function or load sharing is required. The RDBK also protects the conveyor belt system by cutting the peak loads.

The release function allows the tension of a jammed belt to be carefully released using a simple hydraulic pump to actuate the internal hydraulic cylinder.

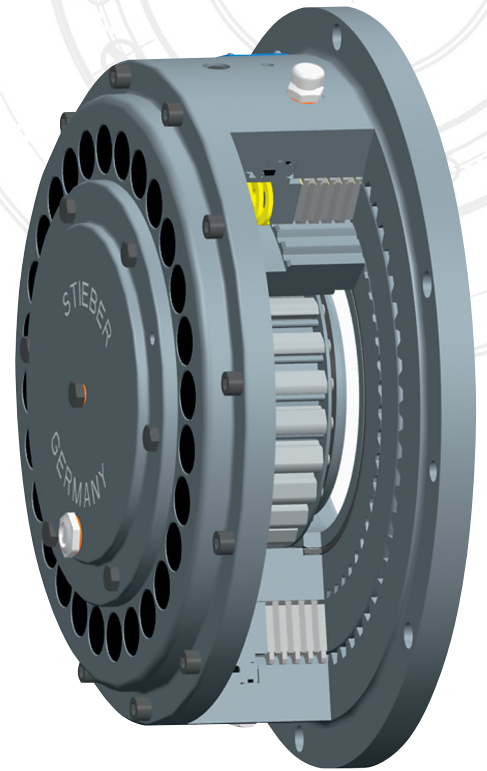
All internal components which rotate backwards under overload, are fully bearing supported. The unit is capable of performing as many reverse rotations as may be required (within the limits of energy dissipation) to completely unload the conveyor prior to maintenance work being carried out.

When the oil pressure is released, the backstop is automatically reset to the original slipping torque.

Where multiple backstops are employed, these can be linked and operated simultaneously from a centralised control location. This feature can significantly reduce downtime and ensure that loss of productivity is kept to a minimum.

At present, the torque capacity for the gearbox mounted backstops reaches a maximum of 180,000 Nm.

For applications where a higher torque capacity is required, a member of the Stieber™ sales team will be able to provide guidance on the special solutions which are available.



STIEBER™

Regal Rexnord

www.stieber.de www.stieber

Hatschekstraße 36

69126 Heidelberg - Germany

+49 (0) 6221-30470

regalrexnord.com

The proper selection and application of products and components, including assuring that the product is safe for its intended use, are the responsibility of the customer. To view our Application Considerations, please visit <https://www.regalrexnord.com/Application-Considerations>. To view our Standard Terms and Conditions of Sale, please visit <https://www.regalrexnord.com/Terms-and-Conditions-of-Sale>

“Regal Rexnord” is not indicative of legal entity. Refer to product purchase documentation for the applicable legal entity.

Regal Rexnord and Stieber are trademarks of Regal Rexnord Corporation or one of its affiliated companies.

© 2019, 2024, 2025 Regal Rexnord Corporation, All Rights Reserved. MCF-P-7513-SC-EN-US 11/25

RegalRexnord™