

MB

**THE NEW STIEBER MULTI-DISC
BRAKE - DEVELOPED FOR
PERFORMANCE**



ENGINEERED AND BUILT FOR TOUGH APPLICATIONS

The Stieber hydraulically released spring-applied multi-disc MB brake was designed for rugged mining applications where the surface temperature must be controlled. This optimal design ensures minimal oil consumption during normal operation, low splash losses as well as reduced heat generation. It is also suitable for external mounting with a torque arm.

OPTIMIZED FOR:

Highest energy efficiency

- Minimum cooling oil requirement in normal operation
- Low cooling capacity required

Reduced maintenance

- Sintered friction linings
- Automated adjustment device (option)

Robustness

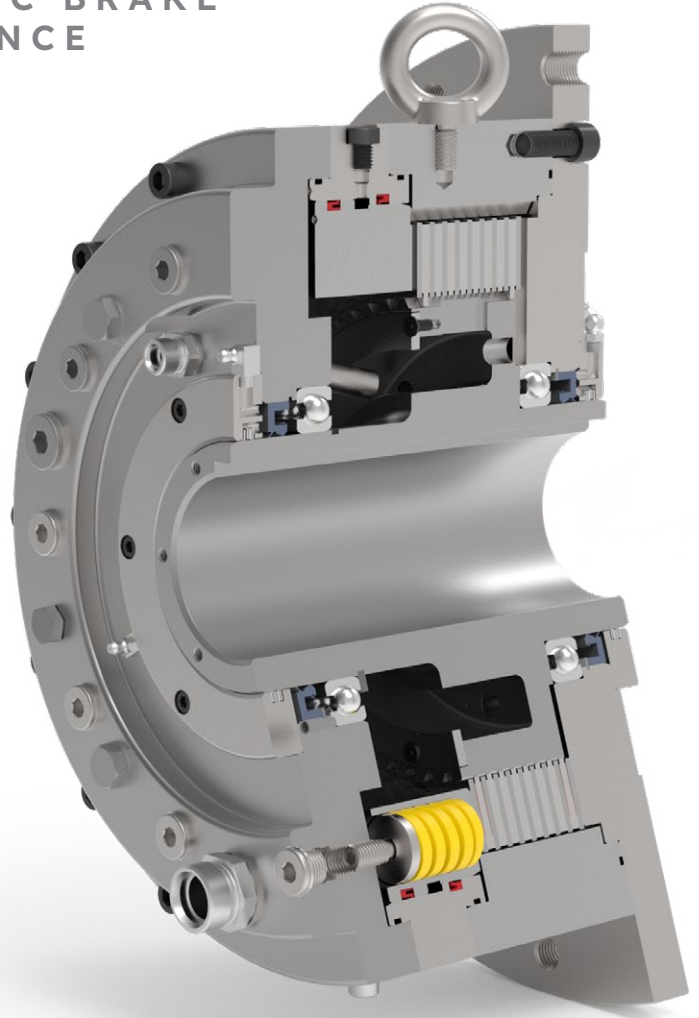
- High heat capacity and fast heat dissipation even in case of loss of hydraulic pressure
- Sealing system with labyrinth and grease chamber

MB

THE NEW STIEBER MULTI-DISC BRAKE - DEVELOPED FOR PERFORMANCE

Stieber is a world leader in the research, development and production of high-precision freewheels and backstops. Based on the patented torque-limiting backstops RDBR-E / RDBK, Stieber once again proves its broad solution competence in mining with the newly developed MB brake.

- Fail-safe protection through spring pre-tensioning with hydraulic release function.
- Low-wear friction linings in sinter quality ensure excellent heat dissipation and high heat capacity.
- A hydraulically operated adjustment device with "booster operation" is available as an option.
- IOT Ready:
 - Prepared for sensors
 - Operating condition/wear
 - Temperature
- Currently, the maximum torque capacity of the externally mounted multi-disc brake is 100,000 Nm.



STIEBER™

Regal Rexnord

stieberclutch.com

Hatschekstraße 36
69126 Heidelberg - Germany
+49 (0) 6221-304707

regalrexnord.com

The proper selection and application of products and components, including assuring that the product is safe for its intended use, are the responsibility of the customer. To view our Application Considerations, please visit <https://www.regalrexnord.com/Application-Considerations>.
To view our Standard Terms and Conditions of Sale, please visit <https://www.regalrexnord.com/Terms-and-Conditions-of-Sale>

"Regal Rexnord" is not indicative of legal entity. Refer to product purchase documentation for the applicable legal entity.
Regal Rexnord and Stieber Clutch are trademarks of Regal Rexnord Corporation or one of its affiliated companies.
© 2023, 2025 Regal Rexnord Corporation, All Rights Reserved. MCF-P-9022-SC-EN-US 01/25

The logo for Regal Rexnord, featuring a stylized green 'R' icon followed by the text 'RegalRexnord™' in a blue sans-serif font.