



SERIES 62

GEARED CAM LIMIT SWITCHES





DECADES OF EXPERIENCE

Across Industries and Applications



Founded in 1932, Stromag™ has grown to become a globally recognized leader in the development and manufacture of innovative power transmission components for industrial drivetrain applications.

Stromag engineers utilize the latest design technologies and materials to provide creative, energy-efficient solutions that meet their customer's most challenging requirements.

Stromag's extensive product range includes flexible couplings, disc brakes, limit switches, an array of hydraulically, pneumatically, and electrically actuated brakes, and a complete line of electric, hydraulic and pneumatic clutches.

Stromag engineered solutions improve drivetrain performance in a variety of key markets including energy, off-highway, metals, marine, transportation, printing, textiles, and material handling on applications such as wind turbines, conveyor systems, rolling mills, agriculture and construction machinery, municipal vehicles, forklifts, cranes, presses, deck winches, diesel engines, gensets and stage machinery.

VISIT US ON THE WEB AT **STROMAG.COM**



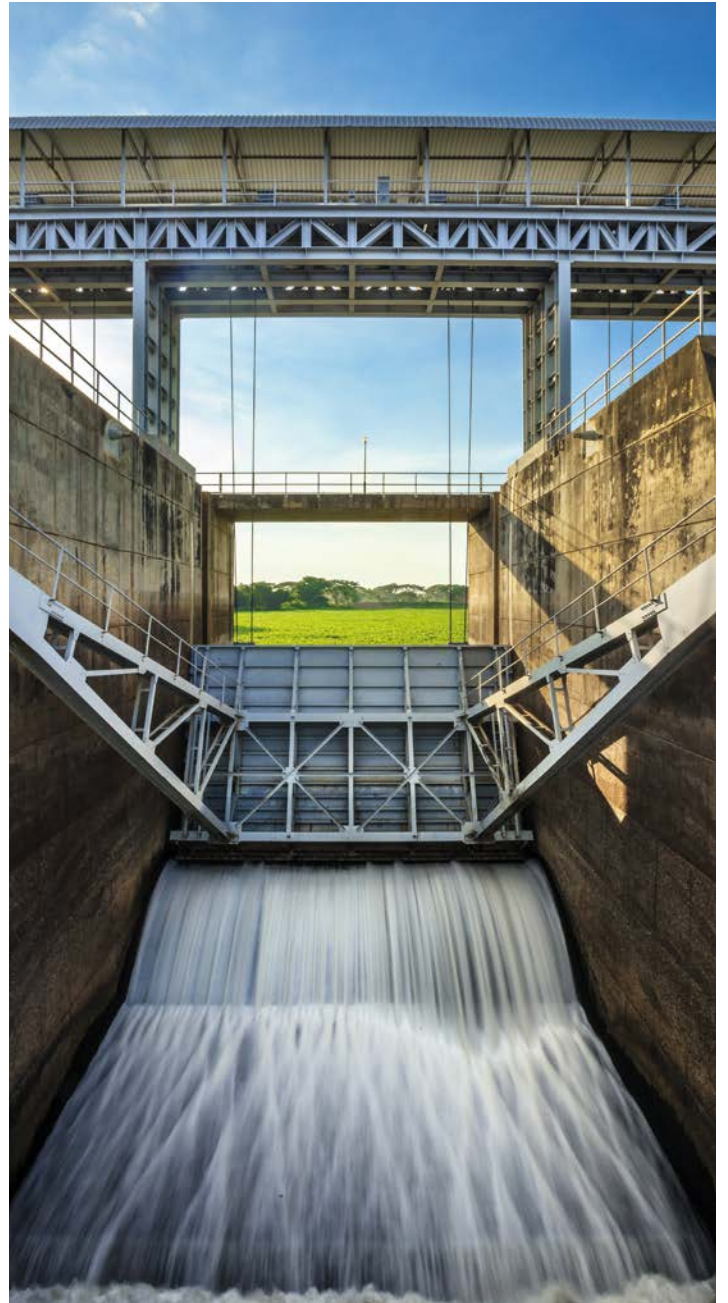
CONTENT

Catalog Serie 62: VI

At a Glance	04
Series 62 SNE – Basic Design Spindle Gear Switch	05
Series 62 SNE– Housing Sizes 2 / 3	06
Series 62 SNE– Housing Size 4	07
Series 62 SNE – Drive Flanges	08
Series 62 HNE – Basic Design Lever Switch	09
Series 62 HNE – Housing Size 1	10
Series 62 HNE – Housing Size 2	11
Series 62 HNE – Available Levers	12
Series 62 GNE – Basic Design Counterweight Switch	13
Series 62 GNE – Housing size 1	14
Series 62 – Main Current Switches	15
Series 62 – Option: Fixed Control Switches	16
Series 62 – Option: Adjustable Control Switches (SNE only)	17
Series 62 - Control Current Switches	18
Series 62 – Contact Arrangement	19
Series 62 – Anti-Condensation-Heating	20
Series 62 – Key Of Types	21

GEARED CAM LIMIT SWITCHES

Limit Switches Main Current



STROMAG SERIES 62

BENEFITS INCLUDE

- Direct switch of three phase motors
- Contacts for 40 Amps

Series 62 SNE – Basic Design Spindle Gear Switch

Revision number: 3.2.1.1-02

Revision date: 03.07.2023

Features

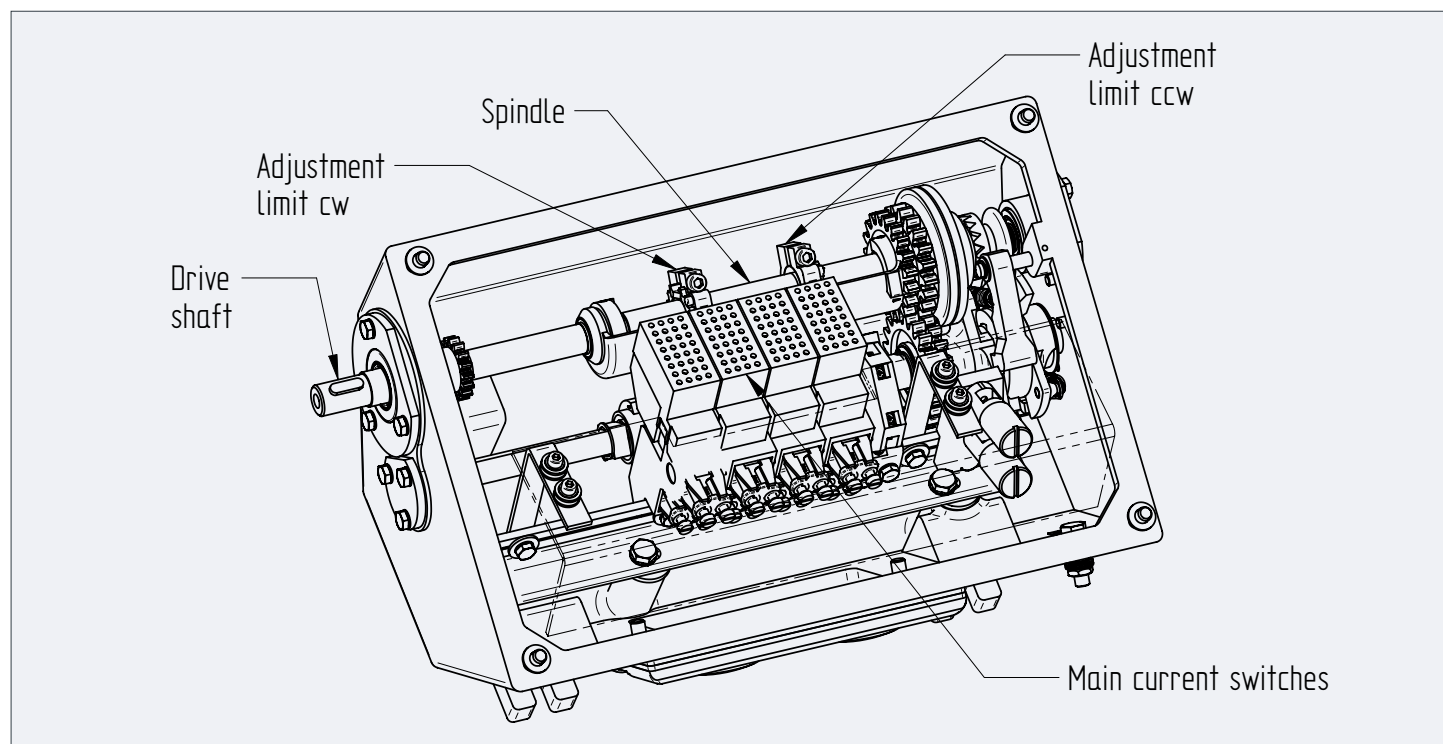
- Main current limit switch for direct switching of three phase-motors
- For 42 and 62 usable revolutions
- Main current contacts for 40 A permanent available

Application

- Steel plants and barrages

Additional information

- Also available in combination with installed auxiliary current contacts



Housing size without control switches			
Housing size	Max. rev range	Main current switches	
		Max. No.	Type
2	42	2 ... 8	11
3	62	2 ... 10	11

Housing size with fixed controls switches				
Housing size	Max. rev range	Main current switches		Max. no. aux. switches
		Max. No.	Type	
2	42	2 ... 4	11	4
2	42	5 ... 6	11	2
3	62	2 ... 6	11	4
3	62	6 ... 8	11	2
4	62	7 ... 8	11	4

Housing size with fixed control switches				
Housing size	Max. rev range	Main current switches		Max. no. aux. switches
		Max. No.	Type	
2	42	2 ... 3	11	2
3	62	2 ... 3	11	4
3	62	4	11	2
4	62	4 ... 6	11	4
4	62	7 ... 8	11	2

GEARED CAM LIMIT SWITCHES

Limit Switches Main Current

Series 62 SNE – Housing Sizes 2 / 3

Revision number: 3.2.1.2-01

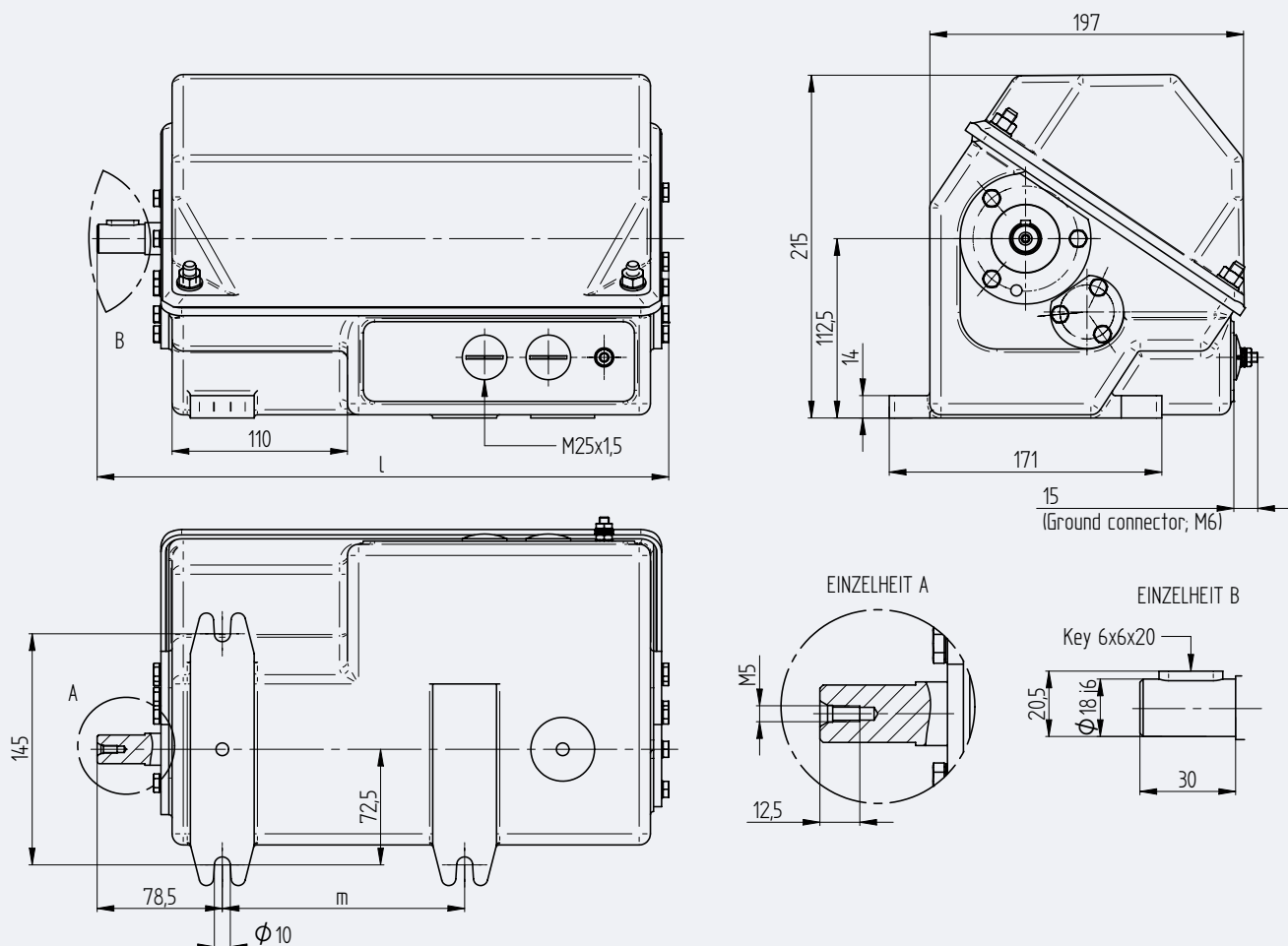
Revision date: 19.11.2019

Features

- Housings in the size 2 and 3 made of aluminum protection rate IP65

Additional information

- Made of sea water resistant aluminum



Housing size	Dimensions [mm]	
	l	m
2	358,5	152
3	398,5	213,5

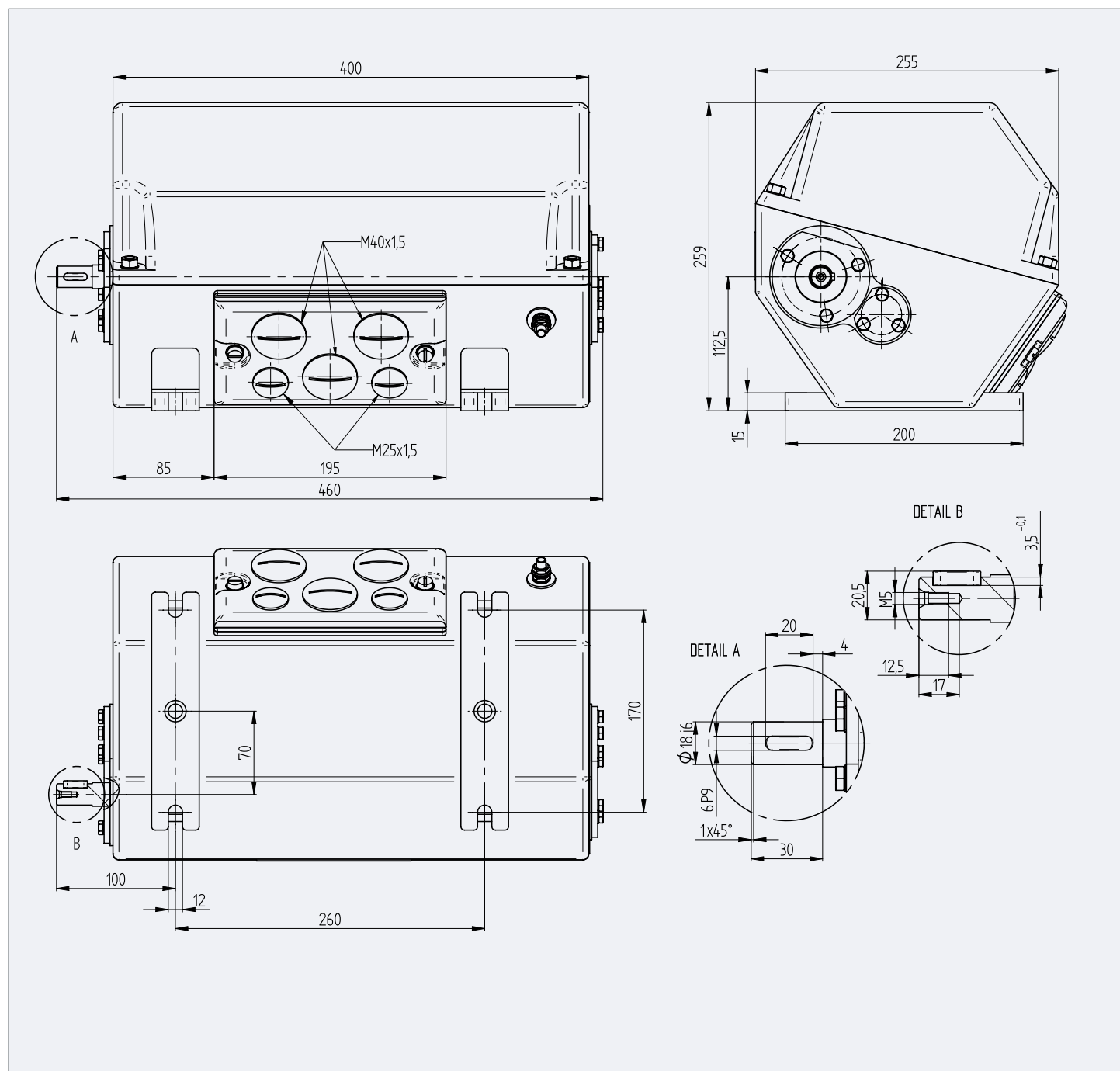
Series 62 SNE – Housing Size 4

Revision number: 3.2.1.3-01

Revision date: 19.11.2019

Features

- Housing size 4 made of cast iron
protection rate IP54



GEARED CAM LIMIT SWITCHES

Limit Switches Main Current

Series 62 SNE – Drive Flanges

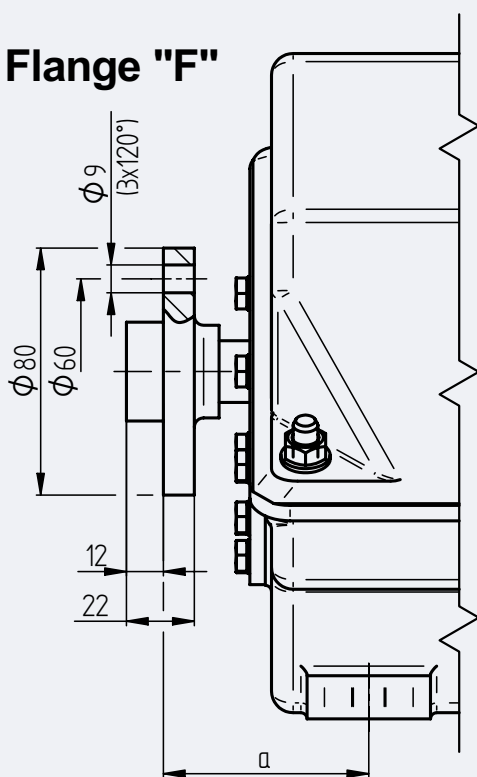
Revision number: 3.2.1.4-01

Revision date: 19.11.2019

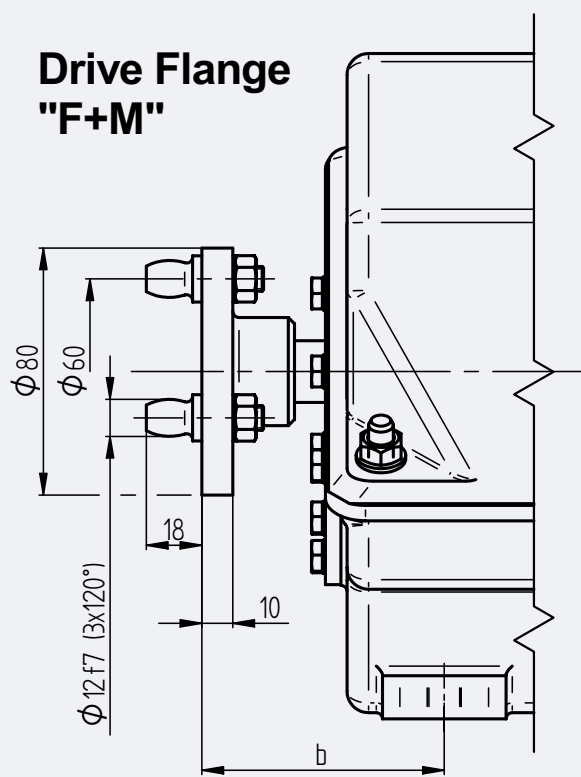
Features

- Drive flanges F and F+M on request

Drive Flange "F"



Drive Flange "F+M"



Housing size	Dimensions [mm]		
	a	b	c
2	66,5	78,5	118,5
3	66,5	78,5	118,5
4	88	100	140

Series 62 HNE – Basic Design Lever Switch

Revision number: 3.2.1.5-01

Revision date: 19.11.2019

Features

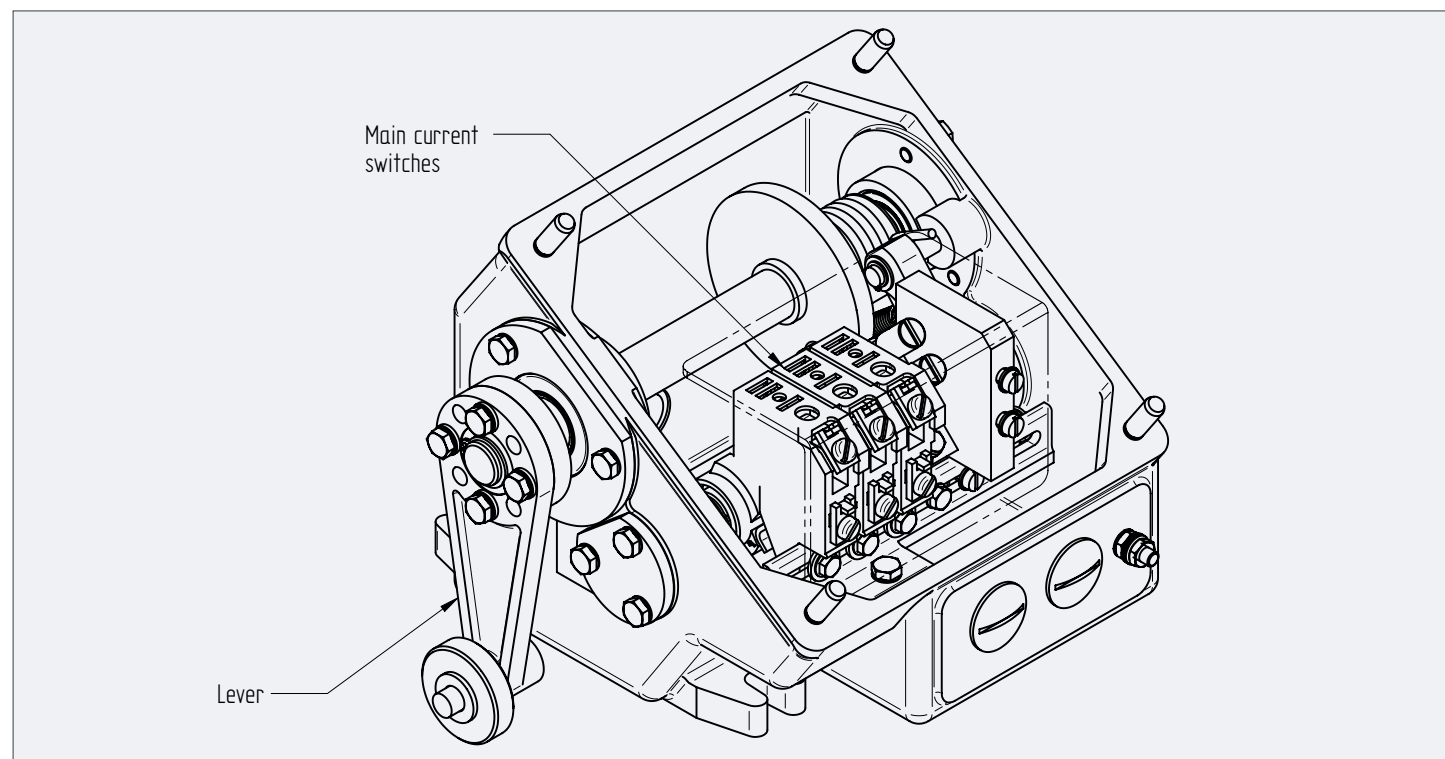
- Main current limit switch for direct switching of three phase-motors
- Main current contacts for 40 A permanent available

Application

- Steel plants and barrages

Additional information

- Also available in combination with installed auxiliary current contacts



Housing size without control switches		
Housing size	Main current switches	
	Max. No.	Type
1	2 ... 4	11
2	2 ... 6	11

Housing size with fixed control switches			
Housing size	Main current switches		Max. no. aux. switches
	Max. No.	Type	
1	2	11	2
2	2 ... 6	11	2

GEARED CAM LIMIT SWITCHES

Limit Switches Main Current

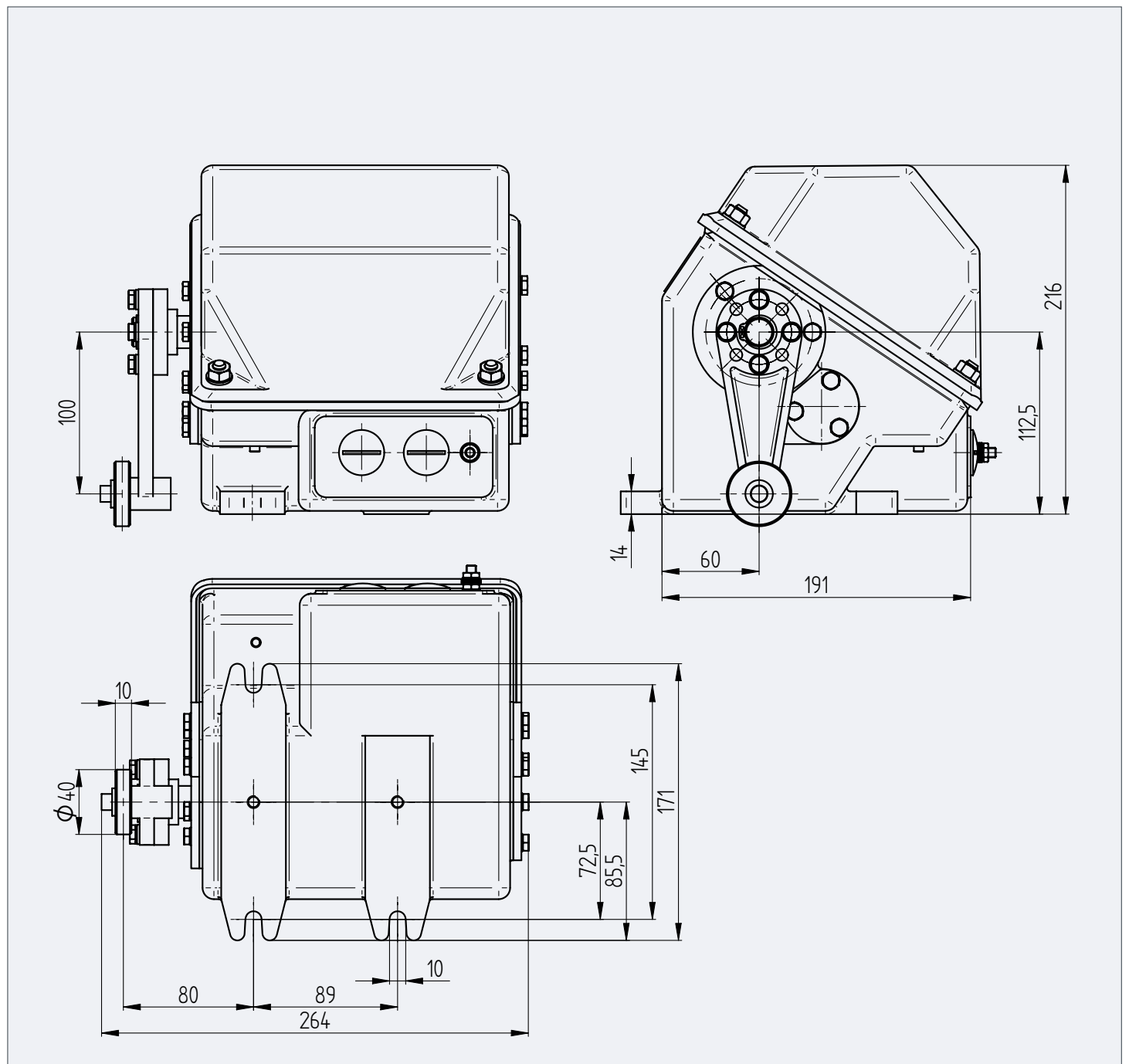
Series 62 HNE – Housing Size 1

Revision number: 3.2.1.6-01

Revision date: 19.11.2019

Features

- Housings in the size 1 and 2 made of aluminum, protection rate IP65



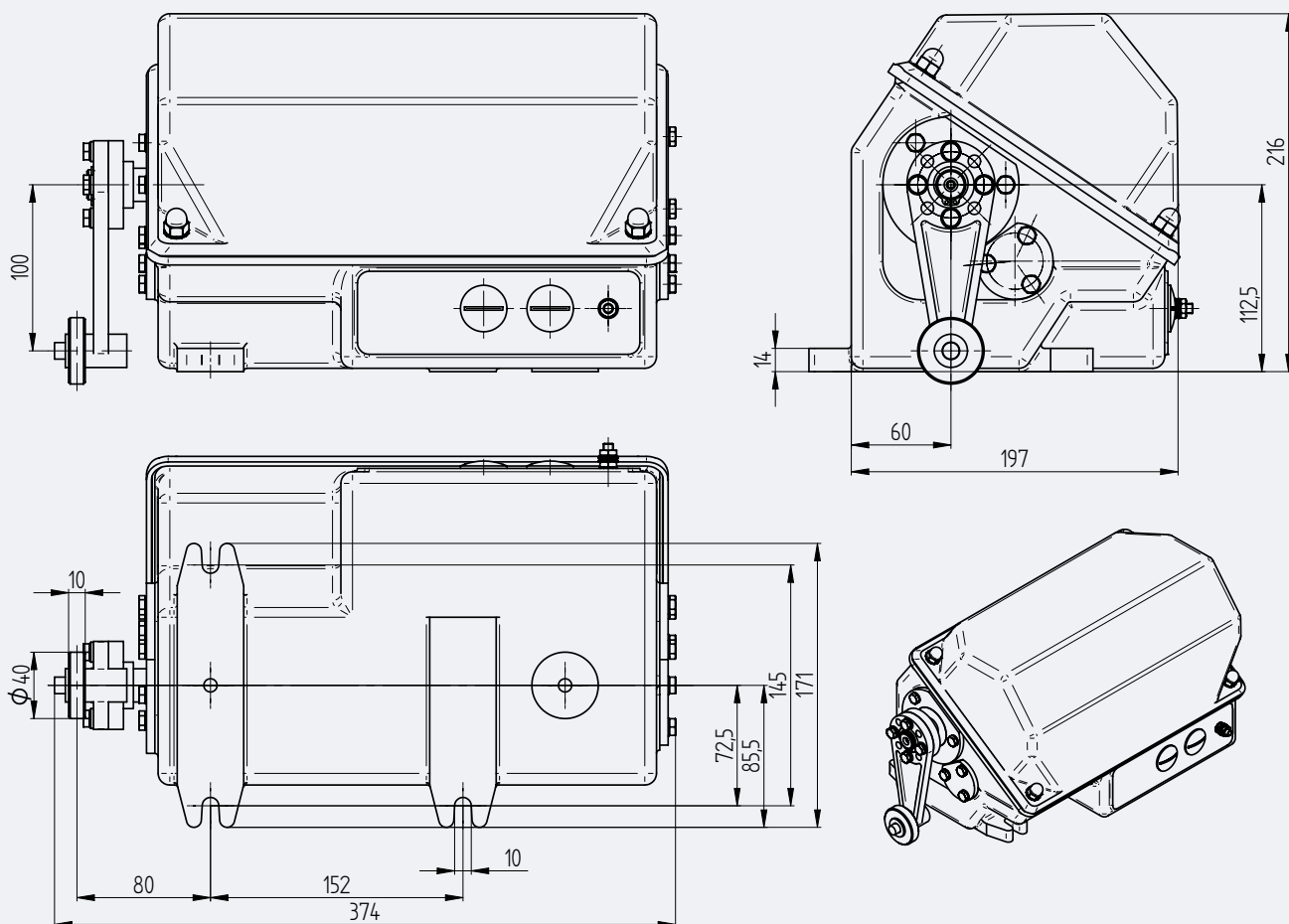
Series 62 HNE – Housing Size 2

Revision number: 3.2.1.7-01

Revision date: 19.11.2019

Features

- Housings in the size 1 and 2 made of aluminum, protection rate IP65



GEARED CAM LIMIT SWITCHES

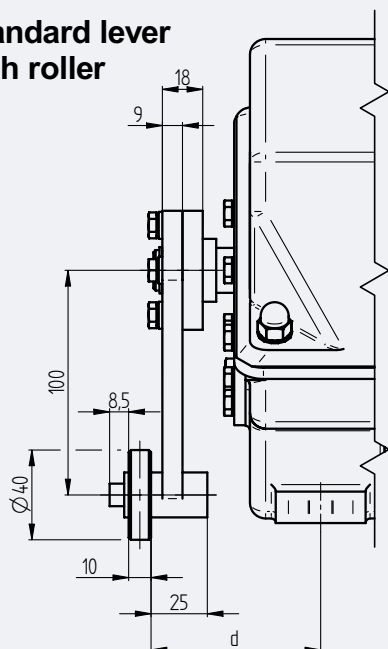
Limit Switches Main Current

Series 62 HNE – Available Levers

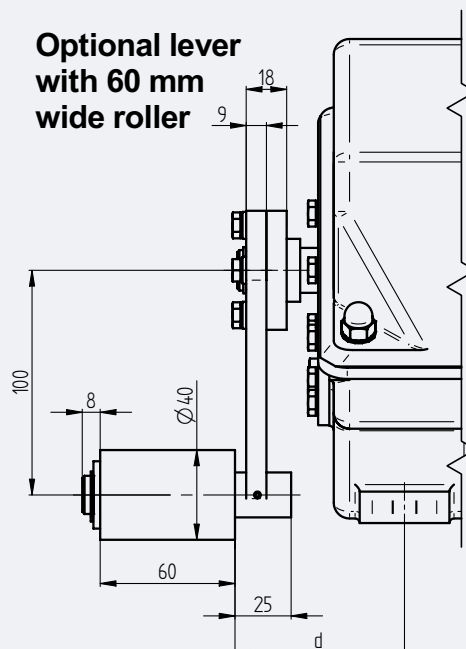
Revision number: 3.2.1.8-01

Revision date: 19.11.2019

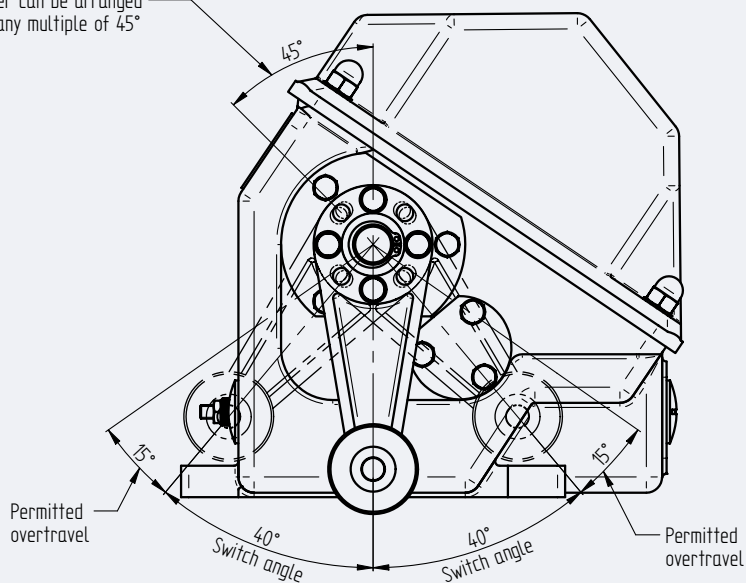
**Standard lever
with roller**



**Optional lever
with 60 mm
wide roller**



Lever can be arranged
at any multiple of 45°



Housing size	Dimension [mm] d
1	75
2	75

Series 62 GNE – Basic Design Counterweight Switch

Revision number: 3.2.1.9-01

Revision date: 19.11.2019

Features

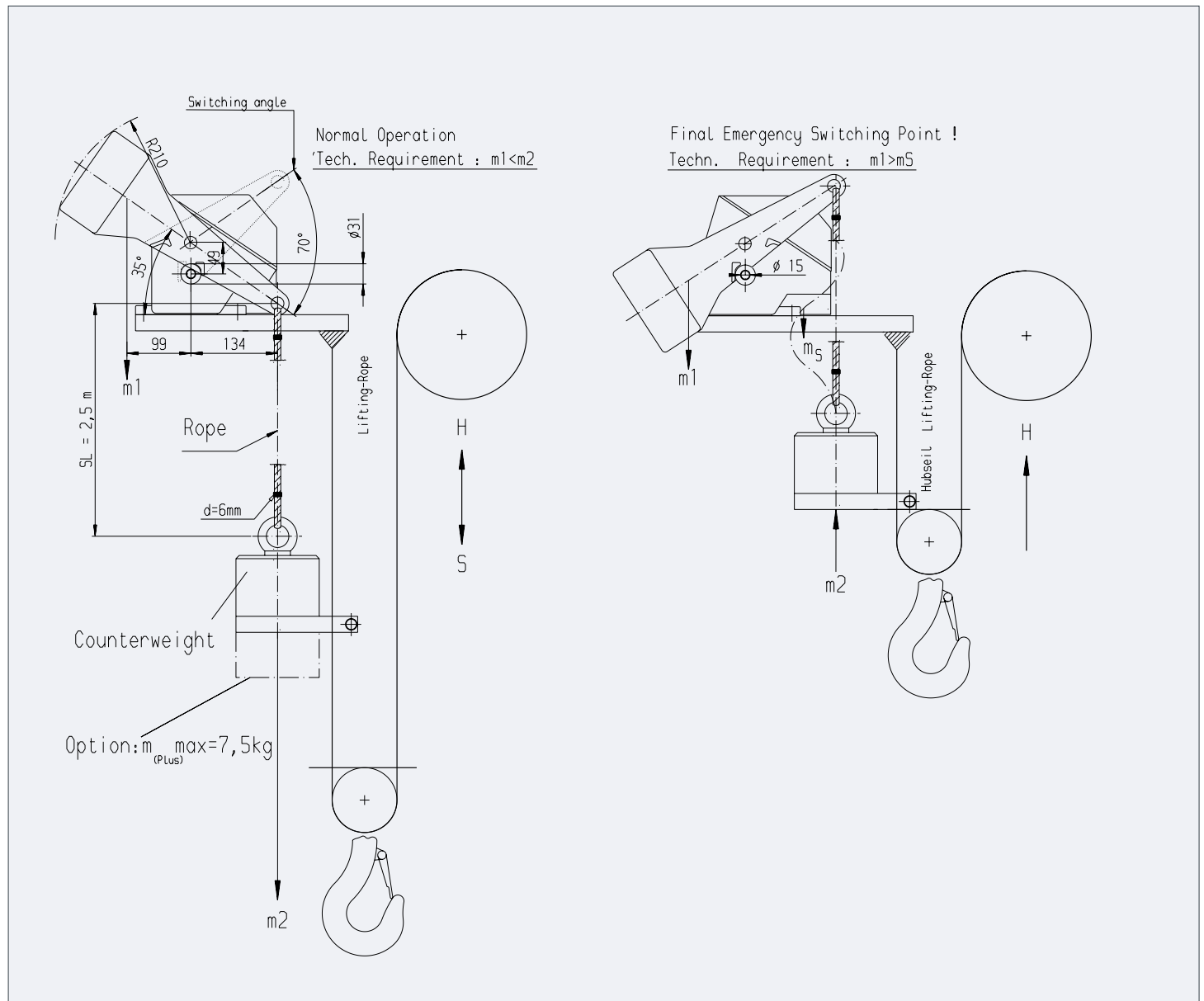
- Main current limit switch for direct switching of three phase-motors
- Main current contacts for 40 A permanent available

Application

- Steel plants

Additional information

- For the upper position of the hook, additionally to the geared cam limit switch at the drum, for diversity and redundancy



Housing size without control switches		
Housing size	Main current switches	
	Max. No.	Type
1	2 ... 4	11

Housing size with fixed control switches			
Housing size	Main current switches		Max. no. aux. switches
	Max. No.	Type	
1	2	11	2

GEARED CAM LIMIT SWITCHES

Limit Switches Main Current

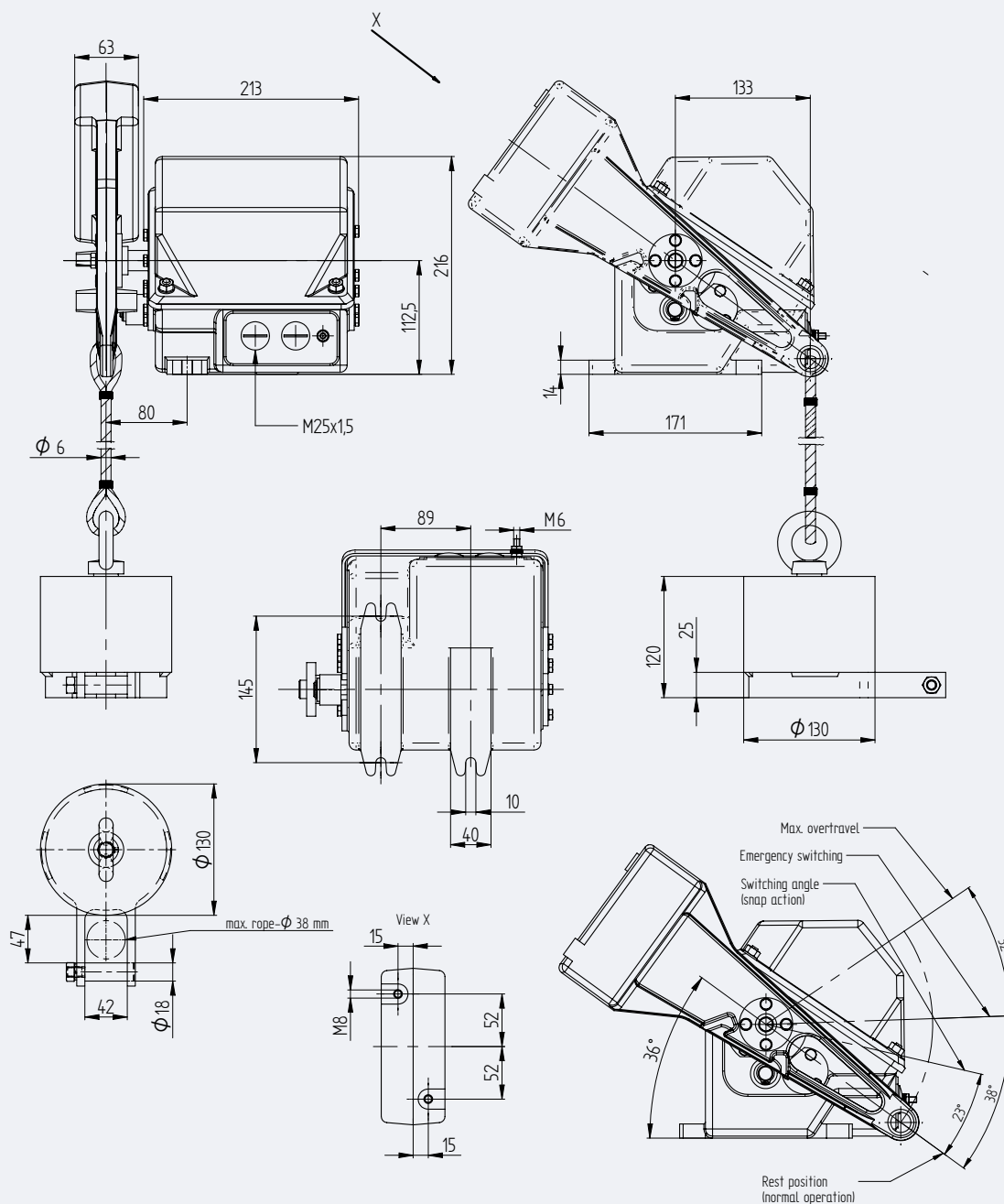
Series 62 GNE – Housing size 1

Revision number: 3.2.1.10-01

Revision date: 19.11.2019

Features

- Housings in the size 1 and 2 made of aluminum, protection rate IP65



Series 62 – Main Current Switches

Revision number: 3.2.1.11-02

Revision date: 03.07.2023

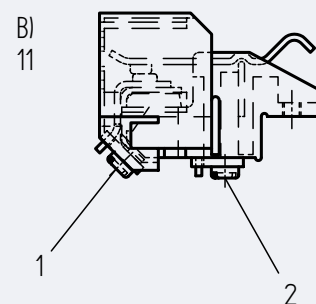
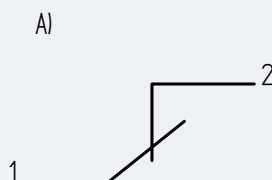
Features

- Main current switches for alternating current (50 Hz / 60Hz)

Additional information

- The performance data of the switches is related to temperatures from -30°C up to + 45°C

A) Circuit diagram (NC)
B) Contact 11



Switching Contact			Switching System		Electrical Data							Connection
Designation	Three phase current	Direct cureent	Snap action	Push action	Permanent current	Slip ring rotor 1), 2) $I_a = 2 \times I_N$ $\cos\varphi = 0,7$			Squirrel-cage rotor 1), 2) $I_a = 2 \times I_N$ $\cos\varphi = 0,6$			Screw terminals for cable cross section [mm²]
					A	230V	400V	500V	230V	400V	500V	
11 ³⁾	•			•	40	15	28	28	12	20	20	1x10 or 2x6

- 1) Breaking capacity in [kW] at 60% duty factor (ED) when switching off ... [V]
- 2) If the same contacts for both directions of rotation of the motors are current transversed, the stated output is adm. Only up to 40% ED
- 3) When used as control current contact, load capacity up to 10A, 500 VAC

GEARED CAM LIMIT SWITCHES

Limit Switches Main Current

Series 62 – Option: Fixed Control Switches

Revision number: 3.2.1.12-01

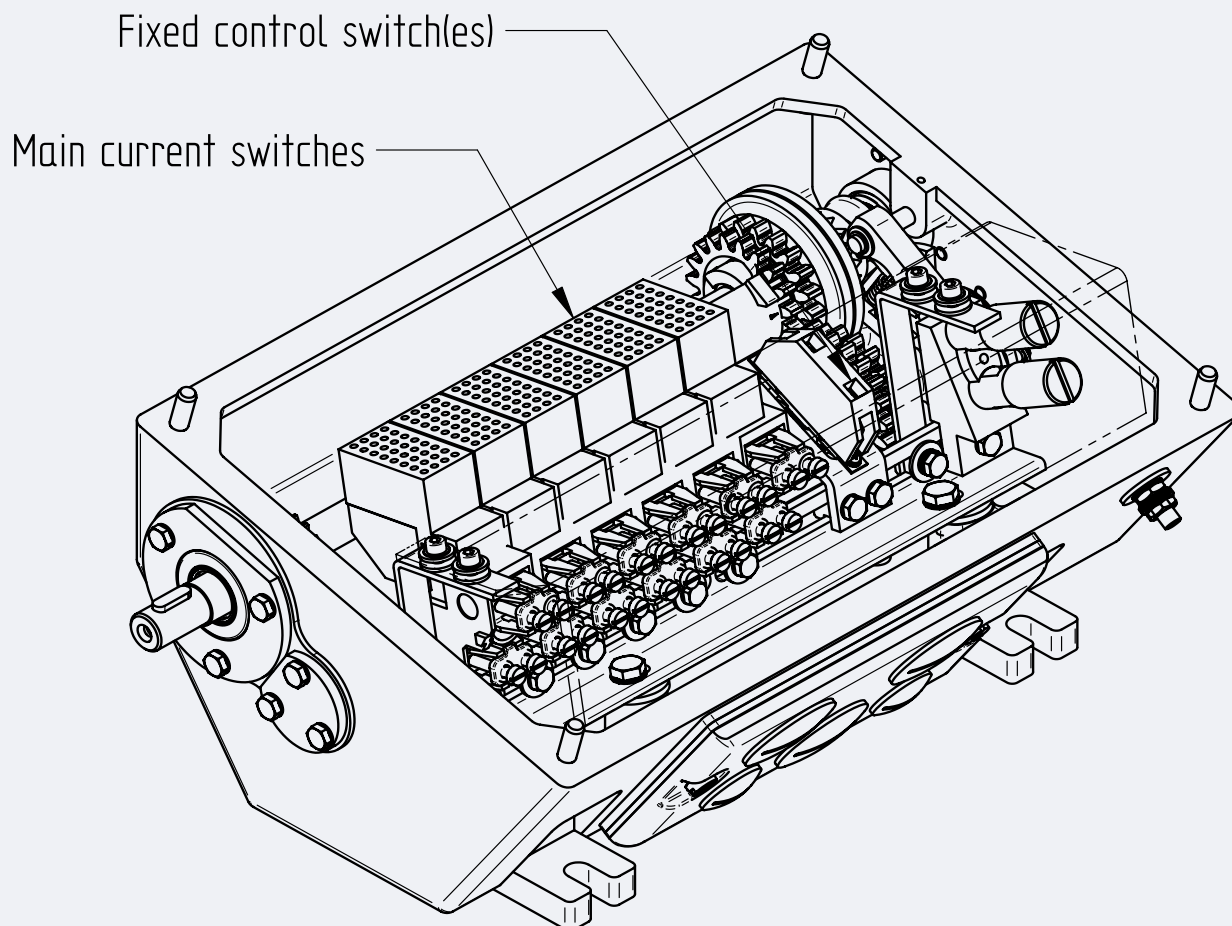
Revision date: 19.11.2019

Features

- Additionally to the main current switches
- Only for auxiliary current

Additional information

- Adjustment of the fixed control switches is not possible, switching is done 20° before the main current switches



Series 62 – Option: Adjustable Control Switches (SNE only)

Revision number: 3.2.1.13-01

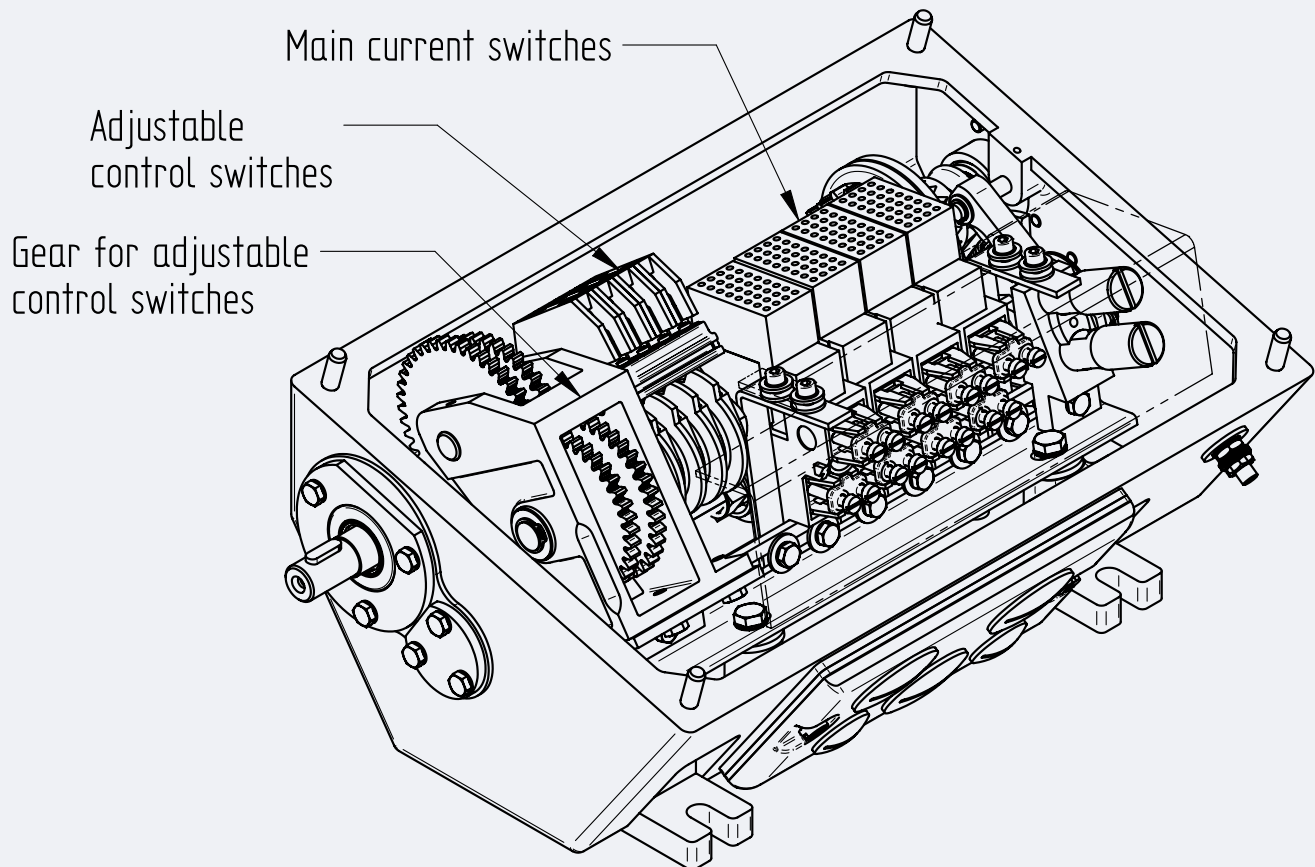
Revision date: 19.11.2019

Features

- Additionally to the main current switches
- Only for auxiliary current

Additional information

- Cam discs for this switches can be infinitely adjusted



Series 62 – Contact Arrangement

Revision number: 3.2.1.15-01

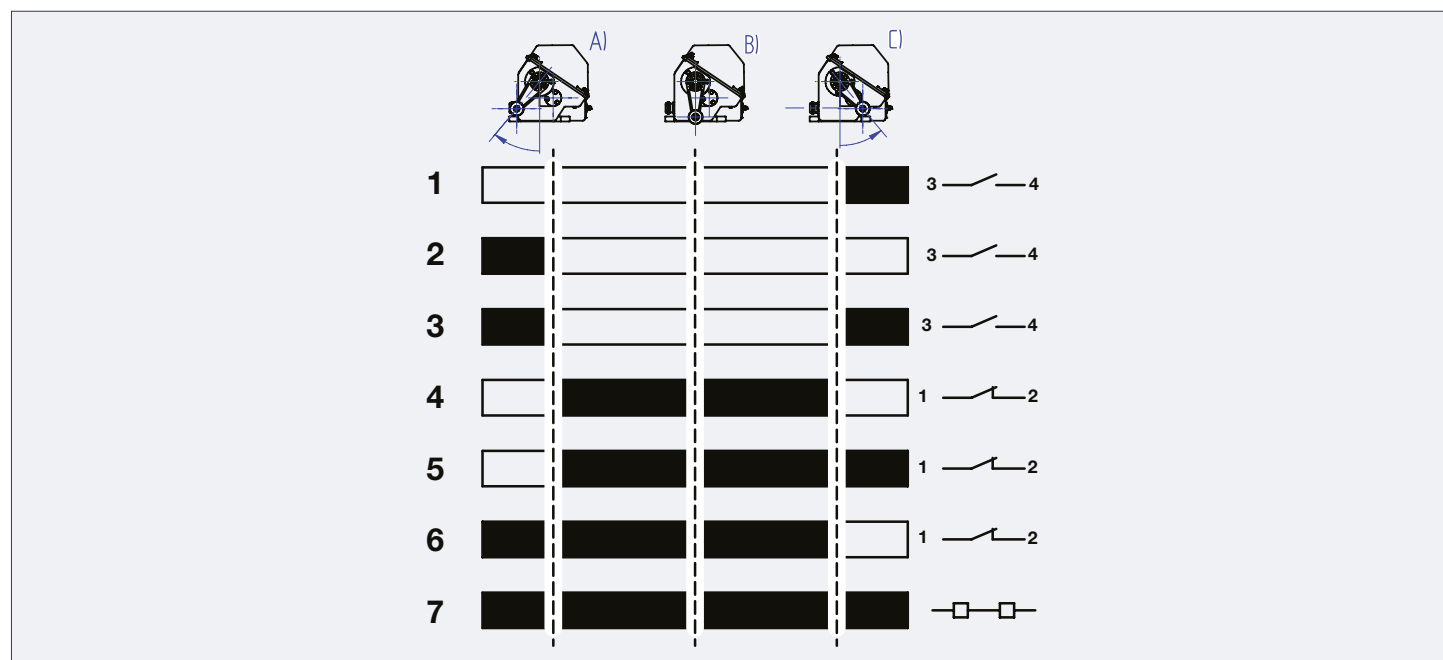
Revision date: 19.11.2019

Features

- Contact arrangement only for main current switches

Additional information

- Contact arrangement of the main current switches must be specified by the customer



Contact Arrangement		Contact state		
Arrangement	Description	Position A clockwise (cw)	Position B neutral	Position C counter-clockwise (ccw)
1	NO - closes in ccw direction	opened	opened	closed
2	NO - closes in cw direction	closed	opened	opened
3	NO - closes in cw & ccw direction	closed	opened	closed
4	NC - opens in cw & ccw direction	opened	closed	opened
5	NC - opens in cw direction	opened	closed	closed
6	NC - opens in ccw direction	closed	closed	opened
7	bridge - always remains closed	closed	closed	closed

GEARED CAM LIMIT SWITCHES

Limit Switches Main Current

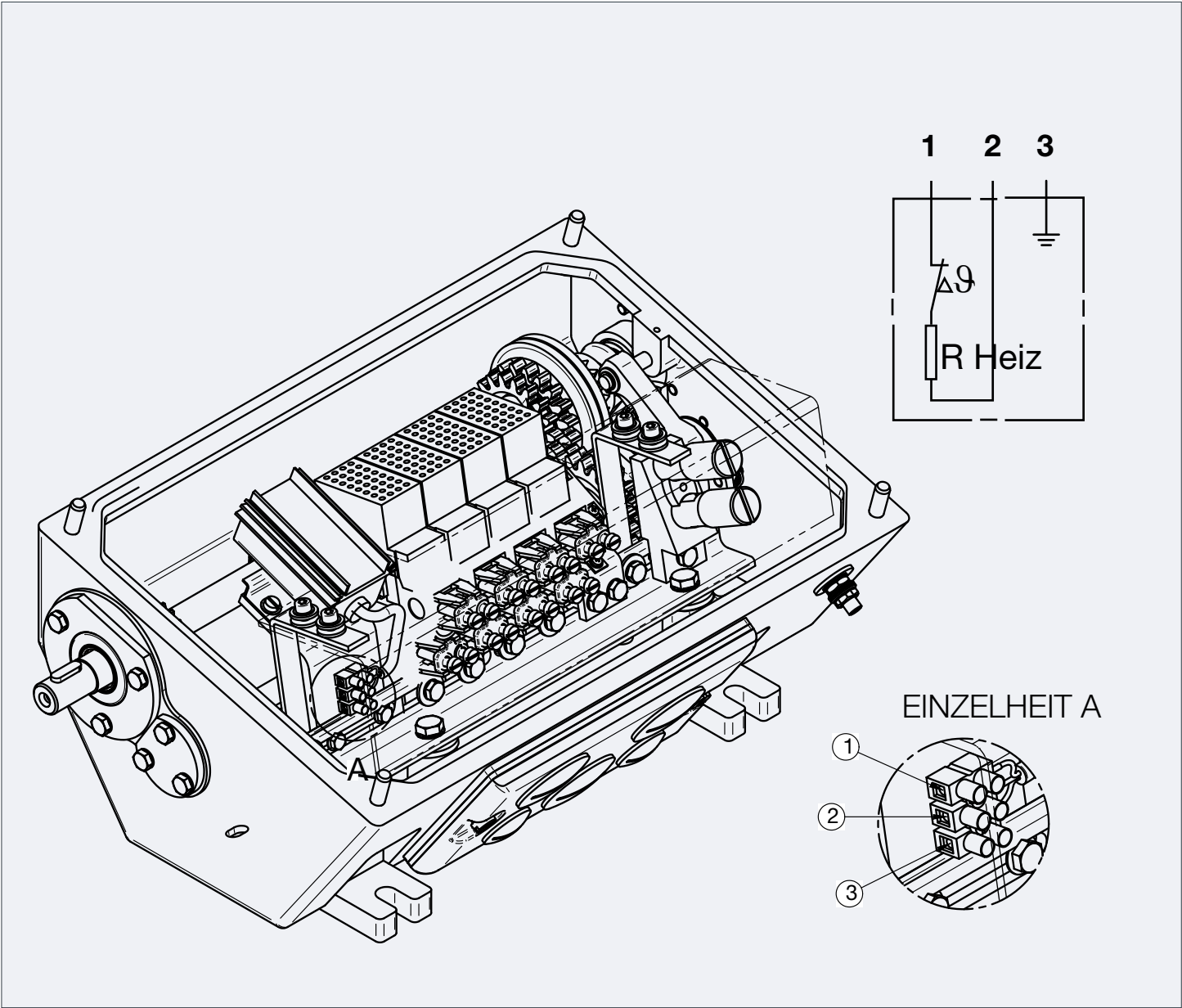
Series 62 – Anti-Condensation-Heating

Revision number: 3.2.1.16-01

Revision date: 19.11.2019

Features

- To prevent the generation of condensation water due to quick temperature drops




Heating Technical Data				
Supply Voltage	Power	Power on	Power off	Connection
24 V AC	10 W	< 25 ° C	> 55 ° C	3 x 0,75 mm²
110 - 265 V AC	10 W	< 25 ° C	> 55 ° C	3 x 0,75 mm²

Series 62 – Key Of Types

Revision number: 3.2.1.17-01

Revision date: 19.11.2019

Stromag GmbH Hansastr.120 Tel.: 02303 / 102-0 59425 Unna		Reihe <input type="text" value="62"/>	Auftr.-Nr. <input type="text" value="123456 / 10"/>	Bauj. <input type="text" value="12/18"/>
Typ <input type="text" value="62-2_42_SNE_311_281FV"/>	Kontakt-anordnung <input type="text" value="444B"/>		Gr. <input type="text" value="2"/>	
Schaltumdreh. (Schaltwinkel) <input type="text" value="42"/>	Nachlaufumdreh. (Nachlaufwinkel) <input type="text" value="20"/>	Vor-kontakt <input type="text" value="10"/>	A bei <input type="text" value="400"/> V	
Abschaltbare Motornennleistung bei 60% ED in kW für				
Schleifringläufer		Käfigläufer		Gleichstrommotoren
230V <input type="text" value="15"/>	400V <input type="text" value="28"/>	500V <input type="text" value="28"/>	230V <input type="text" value="12"/>	400V <input type="text" value="20"/>
			500V <input type="text" value="20"/>	
			220V <input type="text"/>	400-600V <input type="text"/>
			Blasspule <input type="text"/> A	

62	Switch type: Series 62		
62-2	Housing Size	62-1	Housing size 1, aluminum (HNE, GNE)
		62-2	Housing size 2, aluminum (HNE, SNE)
		62-3	Housing size 3, aluminum (SNE)
		62-4	Housing size 4, cast iron (SNE)
42	Usable Revolutions	0	For HNE, GNE
		42, 62	For SNE
SNE	Switch type	SNE	Spindle Switch
		HNE	Lever Switch
		GNE	Counterweight Switch
3	Number of main switches fitted	1 - 10	
11	Type of main switches fitted	11	Main current switches, 40 A AC
2	Number of control switches fitted	1 - 4	
81	Type of control switches fitted	11	Contact (push action) with screw connections, contact material: Silver
		80	Contact (changeover) with screw connections, contact material: Silver Ü
		81	Contact (push action) with screw connections, contact material: Silver Ü
		88	Contact (double action) with screw connections, contact material: Gold Ü
		90	Contact (changeover) with screw connections, contact material: Silver Ü
		90G	Contact (changeover) with screw connections, contact material: Gold Ü
		51	Snap-action with screw-terminals, contact material: gold
		52	Contact (changeover) with screw connections, contact material: Gold Ü
		53	Contact (push action) with screw connections, contact material: Gold Ü
		54	Contact (push action) with screw connections, contact material: Silver Ü
FV	Adjustability of control switches		Fixed control switches
		FV	Adjustable control switches

GEARED CAM LIMIT SWITCHES

Notes

[illegible]



Stop seeing individual parts. Start seeing unlimited possibilities.

Regardless of your objectives or the challenges with your application, Powertrain Solutions can help you achieve your unique goals. No matter what your application looks like, it relies on many components, all working together. But not all components are made to work together reliably and efficiently. Powertrain Solutions has the insight, experience and expertise to engineer your collection of components into a fully optimized system — giving you solutions that boost efficiency, improve reliability and performance, lower costs and simplify ordering and logistics.

WHERE OTHERS SEE PARTS, WE SEE A SYSTEM



Bearings



Belt & Chain
Drives



Clutches &
Brakes



Conveying



Disc & Gear
Couplings



Motors



Speed Reducers
& Gearboxes



Monitoring &
Diagnostics

It's time to see the bigger picture.

Get started at RegalRexnord.com/Powertrain



Stromag[™]

stromag.com

Germany

Hansstraße 120

59425 Unna - Germany

+49 2303 102 - 0

regalrexnord.com

The proper selection and application of products and components, including assuring that the product is safe for its intended use, are the responsibility of the customer. To view our Application Considerations, please visit <https://www.regalrexnord.com/Application-Considerations>.

To view our Standard Terms and Conditions of Sale, please visit <https://www.regalrexnord.com/Terms-and-Conditions-of-Sale> (which may redirect to other website locations based on product family).

"Regal Rexnord" is not indicative of legal entity. Refer to product purchase documentation for the applicable legal entity.

Regal Rexnord and Stromag are trademarks of Regal Rexnord Corporation or one of its affiliated companies.

© 2025 Regal Rexnord Corporation, All Rights Reserved. MCC-8674-SG-EN-US 05/25

 **RegalRexnord**[™]