

KMS AV

MULTI-DISC CLUTCH

Hydraulically operated, spring-applied multi-disc clutch for wet operation, especially designed for the marine market. The difference to “standard” KMS is, that this design has been developed for higher thermal loads.

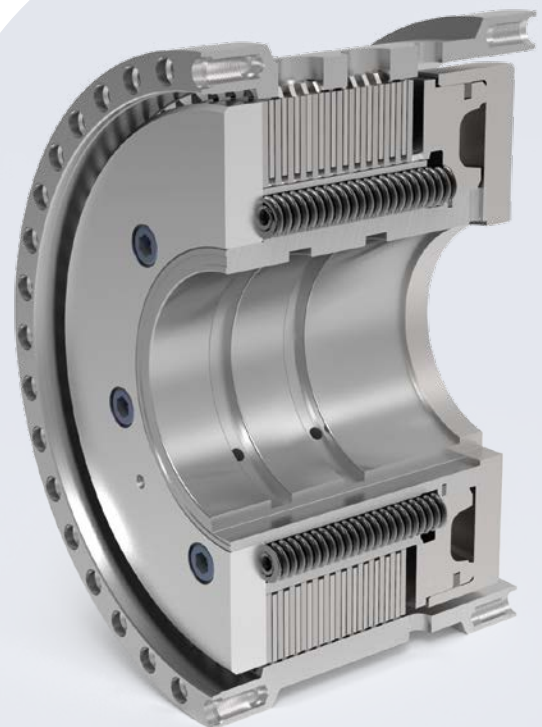
Max. Speed	1900 – 700 rpm
Diameter	365 – 890 mm
Dynamic torque	22000 – 315000 Nm

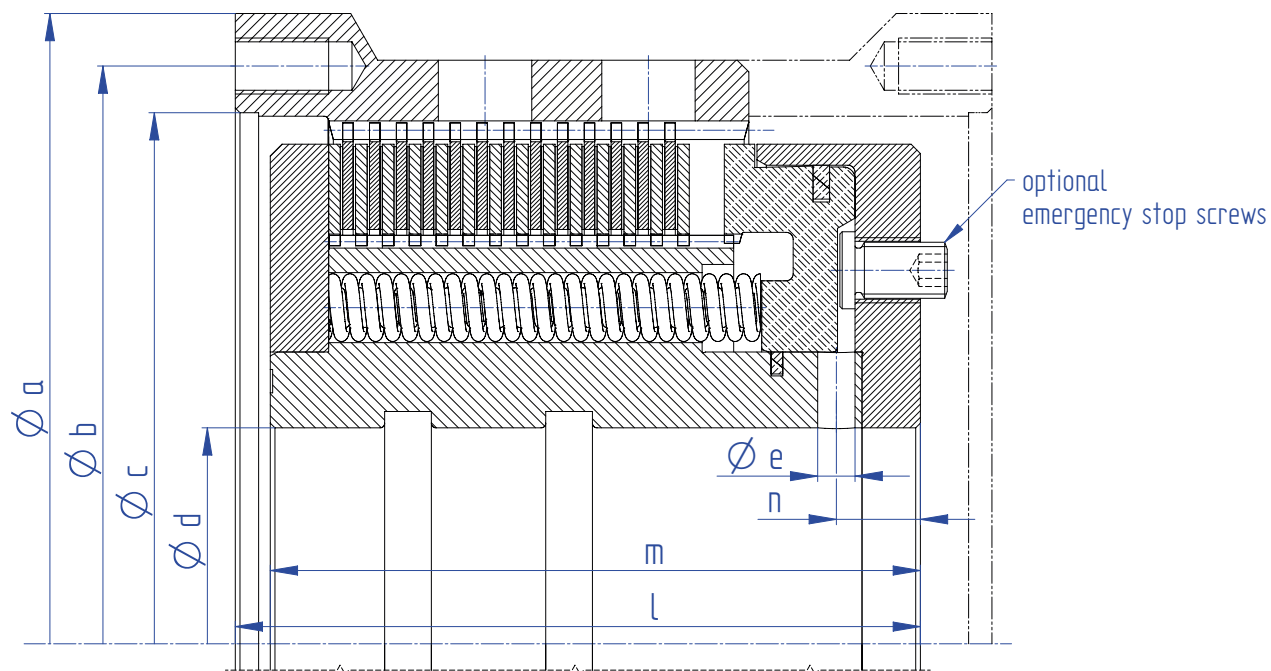
FEATURES

- For high thermal loads
- Excellent torque to weight ratio
- Low mass moment of inertia
- Design can be fitted to customer requirements
- Switching heat dissipated by internal oil cooling
- Long service life of the discs
- Remote control capability
- Low maintenance, any disc wear automatically compensated by piston travel
- Continuous increase of oil pressure, enabling shockless switching
- Mechanical emergency operation device in case of hydraulic oil supply failure
- Drag torque reduced by usage of wave springs

MARKETS

- Marine





Size			2250	3200	4500	6300	9000	12500	18000	25000
Dynamic Torque	Nm		22000	32000	45000	66000	90000	125000	180000	315000
Excess working pressure	bar		25							
Rotational speed	rpm	max	1900	1800	1500	1400	1000	900	950	700
Cooling oil quantity	l/min	min	14	20	21	28	32	41	42	82
		max	44	65	70	93	107	136	139	270
Weight	kg		70	148	185	290	365	500	620	1200
Diameter	mm	a	365	415	455	515	570	620	700	890
		b	340	390	430	485	535	585	660	835
		c	320	370	405	455	500	550	620	780
		d	120	125	165	165	200	220	245	300
		e	11	12	14	16	16	18	20	22
Lengths	mm	l	195	220	245	275	305	355	330	410
		m	185	210	235	265	295	345	320	400
		n	24,5	27	32	36	42	46	51	55

1) Permissible operating pressure range 25 - 29 bar

Regal Rexnord
Hansastraße 120
59423 Unna - Germany
+49 2303 102-0
stromag.com | regalrexnord.com

The proper selection and application of products and components, including assuring that the product is safe for its intended use, are the responsibility of the customer. To view our Application Considerations, please visit <https://www.regalrexnord.com/Application-Considerations>.

To view our Standard Terms and Conditions of Sale, please visit <https://www.regalrexnord.com/Terms-and-Conditions-of-Sale>.

Stromag[™]

"Regal Rexnord" is not indicative of legal entity. Refer to product purchase documentation for the applicable legal entity.
Regal Rexnord and Stromag are trademarks of Regal Rexnord Corporation or one of its affiliated companies.
© 2025 Regal Rexnord Corporation, All Rights Reserved. MCF-10891-SG-EN-US 04/25