

MWU

SINGLE-DISC CLUTCH

The growing integration of different drive train configurations in hybrid technologies, and the development of low-consumption drives require the activation and deactivation of diverse subassemblies. They also require clutches with low consumption and an excellent torque to space ratio that can disengage relatively free from residual torque. Additional sizes available upon request.

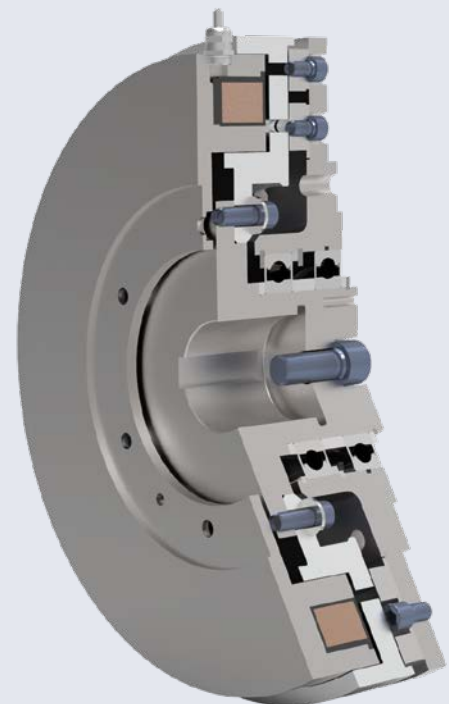
Max. speed	6500 – 1000 rpm
Diameter	192 – 690 mm
Dynamic torque	243 – 12800 Nm

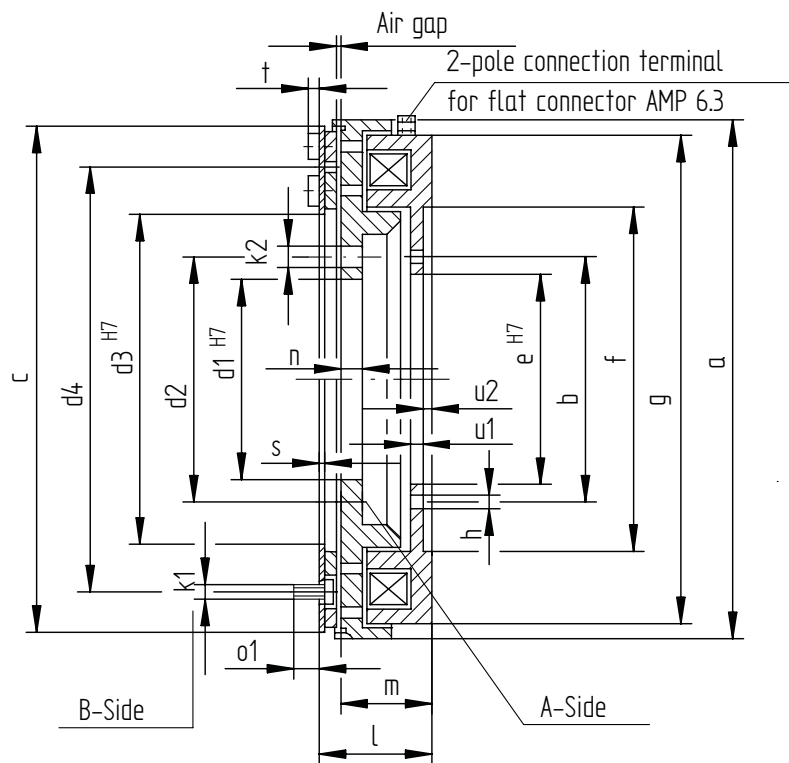
FEATURES

- Active clutch; actuated by electrical current, opened by spring force
- Nearly free from backlash
- Residual torque free in open condition
- Four-pole technology for high power density
- High switching frequency
- Short switching times
- Compact design
- Design without friction linings
- Several versions in modular system available
- Customization possible on request
- Electric Motors
- General Machinery
- Mining and Conveyors

MARKETS

- Amusement Ride and Ski Lift
- Marine
- Crane and Hoist
- Elevator and Escalator
- Farm and Agriculture
- Forklift truck and Electric Vehicle
- Metals
- Diesel Engines and Gensets





size		20-30	20-50	40-100	60-150	80-200	160-400	240-600	400-1000	640-1600
Torque at 1 m/s	Nm	243	405	810	1215	1620	3240	4860	8100	10183
Torque	Nm	420	700	1400	2100	2800	5600	8400	14000	17600
Speed	m/s	6500	6000	5000	4500	4500	4000	3000	2500	2450
Weight	kg	6,4	7,06	13,9	22,7	28,1	56,1	92,2	250	482
Nom. voltage	V	24	24	24	24	24	24	24	24	24
Nom. power consumption	W	57	68	90,5	196	240	216	554	278	606
Nom. current	A	2,37	2,84	3,77	8,17	10	9,01	23,1	11,6	25,25
Airgap	mm	0,5	0,5	0,5	0,5	0,5	0,5	0,8	0,8	1,2
diameter	mm	192	210	266	305	335	423	500	600	690
length	mm	47	47	60,1	70	73,5	93	115	226,8	341

Regal Rexnord

Hansastraße 120

59423 Unna - Germany

+49 2303 102-0

stromag.com | regalrexnord.com

The proper selection and application of products and components, including assuring that the product is safe for its intended use, are the responsibility of the customer. To view our Application Considerations, please visit <https://www.regalrexnord.com/Application-Considerations>.

To view our Standard Terms and Conditions of Sale, please visit <https://www.regalrexnord.com/Terms-and-Conditions-of-Sale>.

Stromag[™]

"Regal Rexnord" is not indicative of legal entity. Refer to product purchase documentation for the applicable legal entity.
Regal Rexnord and Stromag are trademarks of Regal Rexnord Corporation or one of its affiliated companies.
© 2025 Regal Rexnord Corporation, All Rights Reserved. MCF-10895-SG-EN-US 04/25