

# KHE

## SINGLE-DISC CLUTCH

Hydraulically operated, spring-applied 2 or 4 friction surfaces clutch for dry operation. This clutch is an advanced option for hydraulic power take off applications, reducing both maintenance and overall noise.

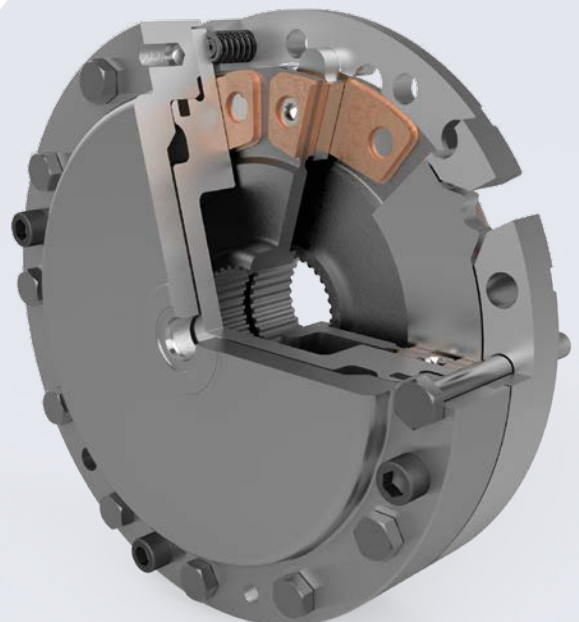
Max. speed	1900 rpm
Diameter	280 mm
Dynamic torque	2900 – 5700 Nm

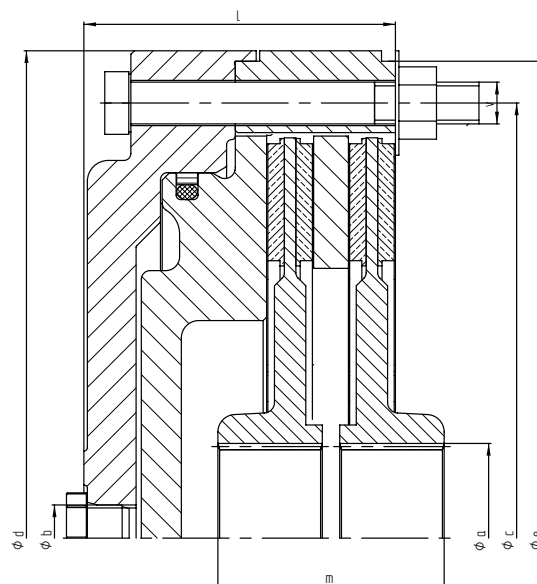
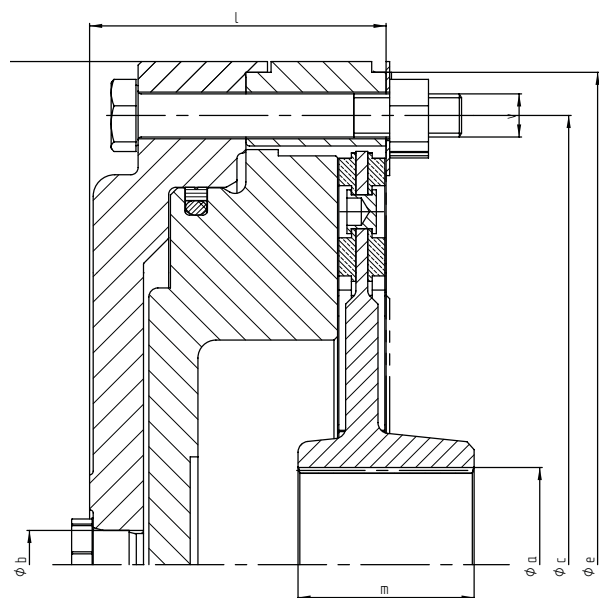
### FEATURES

- Compact design
- Excellent engagement controllability
- Powerful and robust
- Low wear and low noise
- Easy to assemble
- Easy maintenance

### MARKETS

- Off-Highway





Siize			800/2	800/4
Static torque	Nm		3500	7200
Dynamic torque	Nm		2900	5700
Excess working pressure <sup>1)</sup>	bar		25	
Rotational speed	rpm	max	1900	
Weight	kg		30	32
stroke volume	cm³	min.	25	49
	cm³	max.	140	140
max. Toothing root circle-Ø	mm	a	max. 55	
hydraulic connection	mm	b	M20x1,5	
Diameter	mm	c	250	
		d	280	
		e	274 h8	
Length	mm	l	82,5	89,5
		m	customized	
Connection holes		v	12x30° M12	

1) Permissible operating pressure for torque increase 35 bar

## Regal Rexnord

Hansastraße 120  
59423 Unna - Germany  
+49 2303 102-0  
[stromag.com](https://stromag.com) | [regalrexnord.com](https://regalrexnord.com)

The proper selection and application of products and components, including assuring that the product is safe for its intended use, are the responsibility of the customer. To view our Application Considerations, please visit <https://www.regalrexnord.com/Application-Considerations>.

To view our Standard Terms and Conditions of Sale, please visit <https://www.regalrexnord.com/Terms-and-Conditions-of-Sale>.

**Stromag**™

"Regal Rexnord" is not indicative of legal entity. Refer to product purchase documentation for the applicable legal entity.  
Regal Rexnord and Stromag are trademarks of Regal Rexnord Corporation or one of its affiliated companies.  
© 2025 Regal Rexnord Corporation, All Rights Reserved. MCF-10896-SG-EN-US 04/25