

## SSC STEEL SPRING COUPLING

Stromag developed a steel spring coupling with the highest allowable temperature range (-40°C to 150°C) and smallest mounting space.

### APPLICATIONS

- Agricultural machinery
- Construction
- Industrial applications

Our Steel Spring Coupling offers a compact solution custom-tailored to any application in agricultural, construction and industrial applications.

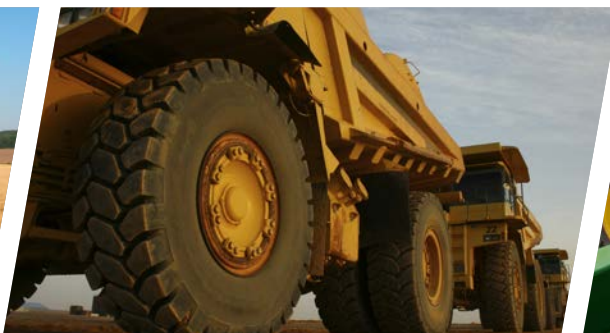
It damps torsional vibrations, reduces the shock load in the drive-train, and therefore improves the expected life-time of the driveline components and the reliability of the engine.

Another advantage is the smooth starting due to the 2-stage characteristic of the torque curve. The design ensures a "fail-safe" protection. In the cardan-shaft execution the combination of the damping-system friction-lining / connecting disc and bearing preload allows a simple construction and reliable operation of the bearing.

The couplings are delivered pre-assembled, so that a simple and quick installation can be done.



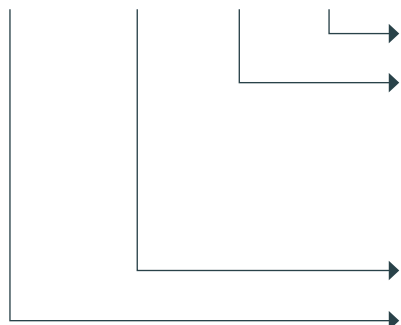
SAE flywheel connection	11.5", 14" and 18"
Torque range	Up to 12.000 Nm
Executions	With and without internal bearing, combination of clutch and coupling
Special surface protection	Nitrocarburized
TVA-experts calculated	



# SSC

## STEEL SPRING COUPLING

### SSC - 14 - C - 4170



Nominal torque

- C for cardan-shaft execution i.e. with integrated bearings
- S for simple execution, i.e. without integrated bearings

Flywheel Connection SAE 14"

Steel Spring Coupling

#### FUNCTION

- Oscillation-/ vibration dampening
- Torque transmission
- Absorbing high impact loads
- Low mass moment of inertia
- Suitable up to 150°C ambient temperature
- Stromag patented technologies

#### EXECUTIONS

- With and without internal bearing (designed for cardan shaft connection with integrated bearing)

#### SURFACE PROTECTION

- Gas nitrocarburized/phosphated
- Further surface protection possible on request

#### BENEFITS INCLUDE

- Customized torsional stiffness, adapted to the application supported by TVA experts
- Adaptation to individual drive-trains by means of various spring packages and friction-lining materials
- Gentle starting by 2-stage torque curve
- Highest life among the highly elastic couplings
- Smallest possible highly elastic coupling for this application
- Highest temperature resistance up to 150°C



Designation			SSC-14-C	SSC-14-S	SSC-11,5-C	SSC-11,5-S
Article number			856-00101	856-00102	856-00104	856-00105
Nominal torque	$T_{kN}$	Nm	4170	4170	2550	2550
Alternating torque	$T_{kw}$	Nm	830	830	510	510
Flywheel connection			SAE 14	SAE 14	SAE 11,5	SAE 11,5
Weight	$m_{ges}$	kg	31,7	13,5	17,3	7,4
Max. rotating speed	$n_{max}$	rpm	3000	3000	3600	3600
Coupling outer diameter	$d_1$	mm	466,725	466,725	352,42	352,42
Customer connection – driven side	Customized					

#### Regal Rexnord

Hansastraße 120

59423 Unna - Germany

+49 2303 102-0

[stromag.com](http://stromag.com) | [regalrexnord.com](http://regalrexnord.com)

The proper selection and application of products and components, including assuring that the product is safe for its intended use, are the responsibility of the customer. To view our Application Considerations, please visit <https://www.regalrexnord.com/Application-Considerations>.

To view our Standard Terms and Conditions of Sale, please visit <https://www.regalrexnord.com/Terms-and-Conditions-of-Sale>.