

LIGHTXCROSS LX®

**RELIABLE DEACTIVATION OF
TRANSLATORY MOVEMENTS**

RELIABLE DEACTIVATION WITH THE STROMAG LIGHTXCROSS LX® .

The cross lever limit switch "LightXcross LX®" is a solution for stopping the movements of cranes and trolleys with the known reliability of Stromag limit switches.

In compliance with the pertinent EU standards and the Machinery Directive, Stromag offers a product consisting of a robust housing of synthetic material (PBT) with the a high degree of protection (IP66) combined with a cross lever without mechanical end stop. This product features positive opening changeover switches for two switch-off positions per each direction and one neutral center-position (latching all 90°).

Owing to its compact design, this solution can be installed at either the base or the top. Fitted with a detachable cover, the control cable can be connected easily with standard screw fasteners. An easily legible display window shows the current switching position for ease of onsite installations. This solution also serves as a compatible replacement for products from all known conventional manufacturers.



Positions shown on display window and by lever markings.



LIGHTXCROSS LX[®]

RELIABLE DEACTIVATION OF TRANSLATORY MOVEMENTS

CUSTOMER

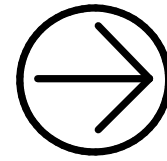
- OEM Crane manufacturers

APPLICATION

- Cross and long travel for all EOT crane

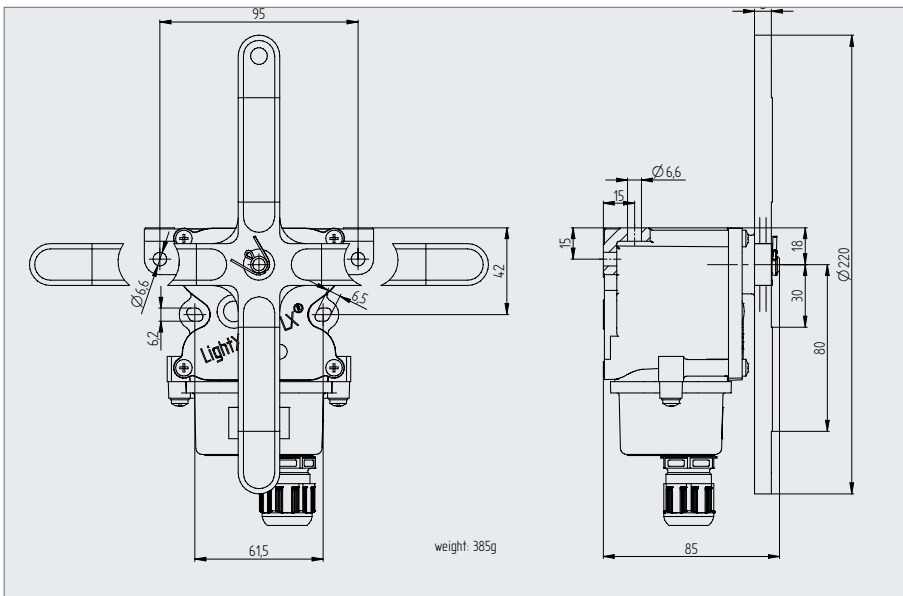
BENEFITS INCLUDE

- Two switch-off positions per each direction and one neutral center-position (latching all 90°)
- Positions shown on display window and by lever marking
- Without mechanical end stop
- Four switches with positive opening acc. to IEC EN 60947-5-1 incl. Annex K
- Snap action switches with silver or gold plated contact material
- Separate switches for pre- and end-stop

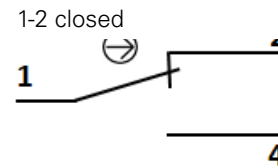


Contacts with positive opening operation in compliance with IEC 60947-5-1, Annex K:

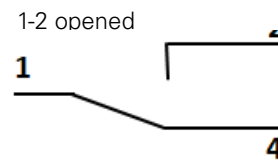
The positive opening operation guarantees that a NC contact is opened even if it's welded (e.g. due to short circuit) or if the internal spring is broken.



Contact released:



Contact actuated:



SWITCH SETTING / POSITION (ROTATION DIRECTION)

Contact	1. / +180° (ccw)	2. / +90° (ccw)	3. / 0° (Neutral)	4. / -90° (cw)	5. / -180° (cw)
S1	1-2 opened	1-2 closed			
S2	1-2 opened		1-2 closed		
S3	1-2 closed			1-2 opened	
S4	1-2 closed				1-2 opened

Regal Rexnord

Hansastraße 120

59423 Unna - Germany

+49 2303 102-0

stromag.com | regalrexnord.com

The proper selection and application of products and components, including assuring that the product is safe for its intended use, are the responsibility of the customer. To view our Application Considerations, please visit <https://www.regalrexnord.com/Application-Considerations>.

To view our Standard Terms and Conditions of Sale, please visit <https://www.regalrexnord.com/Terms-and-Conditions-of-Sale>.

Stromag[™]

"Regal Rexnord" is not indicative of legal entity. Refer to product purchase documentation for the applicable legal entity. Regal Rexnord and Stromag are trademarks of Regal Rexnord Corporation or one of its affiliated companies. © 2025 Regal Rexnord Corporation, All Rights Reserved. MCF-P-8218-SG-EN-US 04/25