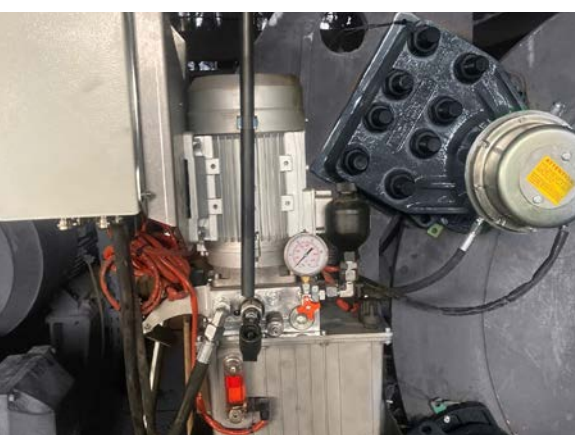


STROMAG™ SHPU RANGE

HYDRAULIC POWER PACKS



THE SHPU HYDRAULIC POWER PACKS OFFER COMPLETE AND ECONOMICAL SOLUTIONS TO MEET ALL THE REQUIREMENTS OF THE INDUSTRIAL APPLICATIONS.

All SHPU Hydraulic Power Packs are manufactured and tested in the workshops of Stromag which is ISO9001 certified.

SHPU1

Thanks to its compactness and simple design, this HPP is an economical solution for all braking systems in on/off operation. The OP6 option allows this HPP to be used in steel industry.

SHPU1	Caliper	SH1	SH5	SH9A	SH18B	SH25	SH32
0.37 kW		1 to 7	1				
0.75 kW		8 to 12	2 to 4	1 to 2			
2.2 kW			5	3	1 to 2	1	1

SHPU2

Thanks to its modularity, this HPP can equip braking systems with advanced functions such as regulated braking, stepped braking, or lowering of the load.

Electric level, temperature or clogging indicators, supplied as an option, allow optimal monitoring of the braking system.

SHPU2	Caliper	SH1	SH5	SH9A	SH18B	SH25	SH32
0.75 kW / 8L or 11L		1 to 12					
2.2 kW / 8L			1 to 5	1 to 3			
2.2 kW / 11L			6 to 9	4 to 5	1 to 3	1 to 2	1

SHPU3

Thanks to its 35L tank, this HPP can be associated with a large number of brakes. It can be adapted to all braking configurations including Soft Braking and MOPS.

Soft Braking and MOPS functions exist also with the 8L tank.

SHPU3	Caliper	SH1	SH5	SH9A	SH18B	SH25	SH32
0.75 kW / 8L or 35L		1 to 12					
2.2 kW / 35L		13 to 60	1 to 30	1 to 17	1 to 10	1 to 6	1 to 5
2.2 kW / 8L		13 to 16	1 to 5	1 to 3	1 to 2	1	1

SHPU CONFIGURATIONS AND OPTIONS

SHPU1

Tank 5L (4.5L useful)	
Motor	0.37 kW
	0.75 kW
	2.2 kW

SHPU2

Tank	8L (6L u.)
	11L (7.5L u.)
Motor	0.75 kW
	2.2 kW

SHPU3

Tank	35L (30L u.)
	8L (6L u.)
Motor	0.75 kW
	2.2 kW

Options		SHPU		
CPS	Mechanical pressure switch	1	2	
Mano	Manometer	1		
MS	Motor special voltage	1	2	
OP1-DM	Enhanced security on return circuit	1		
OP6	For iron and steel industry		2	3 / 35L
OP1-OP2	Manual lowering with dead man safety		2	3 / 35L
OP1-OP3	Manual lowering with overspeed detection		2	3 / 35L
Y5	Regulated braking		2	3 / 35L
Y1-3	Stepped braking		2	3 / 35L
OP5E	Electrical clogging indicator		2	3 / 35L
OP7-8	Oil temperature and level electrical indicator		2	3 / 35L
OP10	Drip tray		2	3 / 35L
SOFT BRAKING	Soft and progressive braking			3 / 35 or 8L
MOPS	Manual Overload Protection System			3 / 35 or 8L
ACC+	Opening time reduction			3 / 35L



Siman is a Safety Intelligent MANager system for hydraulic monitoring and control of the SHPU HPP. It is integrated in the K-SI electrical unit. It can be also integrated directly in the customer control enclosure.

ELECTRICAL UNIT OPTIONS



K-TB	Terminal Box
-1	10 inputs/outputs
-2	20 inputs/outputs

SHPU 1 - 2 - 3



K-BA	Basic Electrical Unit
------	-----------------------

SHPU 1 - 2



K-PR	Premium Electrical Unit
------	-------------------------

SHPU 2 - 3



K-SI	Electrical Unit with Siman
------	-----------------------------------

SHPU 1 - 2 - 3

Non contractual photographs



Regal Rexnord™

stromag.com

Stromag France SAS

Avenue de l'Europe

18150 La Guerche sur L'Aube - France

+33 (0)1 49 90 32 20

regalrexnord.com

The proper selection and application of products and components, including assuring that the product is safe for its intended use, are the responsibility of the customer. To view our Application Considerations, please visit <https://www.regalrexnord.com/Application-Considerations>. To view our Standard Terms and Conditions of Sale, please visit <https://www.regalrexnord.com/Terms-and-Conditions-of-Sale>.

"Regal Rexnord" is not indicative of legal entity. Refer to product purchase documentation for the applicable legal entity.

Regal Rexnord and Stromag are trademarks of Regal Rexnord Corporation or one of its affiliated companies.

© 2021, 2024 Regal Rexnord Corporation, All Rights Reserved. MCF-P-8873-SG-EN-A4 05/24

