

## DISC BRAKE FAV40

- Fail-safe
- Spring applied/thruster release
- Auto centering/positioning system
- Lining wear compensation
- Thruster stroke/not adjusted switch
- Brake release/ON-OFF switch
- Manual release lever
- Stainless steel pins

### Operating conditions:

Ambient temperature: -20C to +70C

Corrosion protection according to:

- ISO 12944-6:2018 Class C4 High / C5 Medium

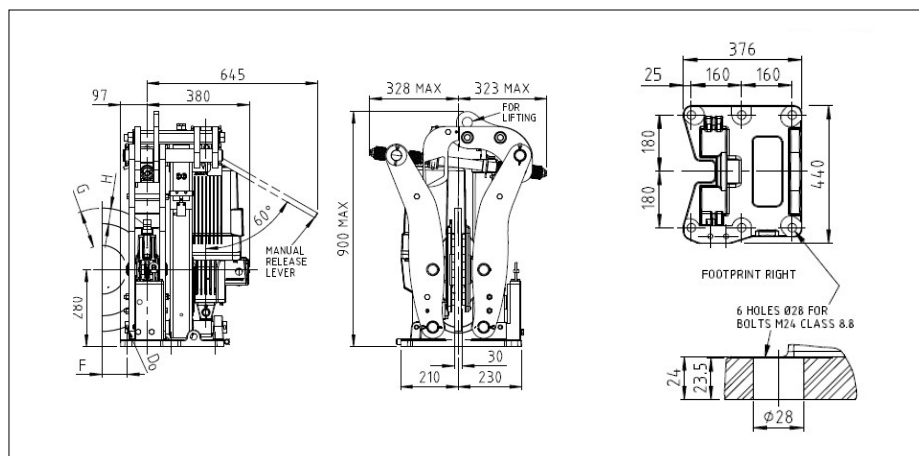
Other conditions: Consult Svendborg Brakes

### Application

- Service Brake

### Options:

- Manual Release Sensor (Inductive)
- Manual Release Lever Top Activated
- Pad Wear Limit Sensor
- Temperature Sensor
- Load Sensor / Clamping Force
- Pad Wear Linear Sensor
- Terminal Box



Weight without thruster: 196 kg / Weight with thruster: 236 kg

Caliper	Clamping Force [N] ±5% <sup>1)</sup>	Disc (ØD) [mm]	450	500	560	630	710	800	900	1000
FAV 403	47500	$M_B$ [Nm] $\mu = 0.4^2$	6100	6910	8000	9260	10700	12330	14130	15940
FAV 402	32300		4090	4700	5440	6300	7280	8380	9610	10840
FAV 401	20100		2540	2930	3380	3920	4530	5220	5980	6740
Distance F (F= D/2 - 130)	mm		95	120	150	185	225	270	320	370
Distance H / G	mm		H = 58.5 / G = 136							

1) Clamping force: Factory setting (adjustable from 100% to 70%).

2) The actual friction level/coefficient is dependent upon inertia, pad surface pressure and rubbing speed

**SVENDBORG  
BRAKES™**

### Regal Rexnord

Jernbanevej 9

DK-5882 Vejstrup, Denmark

+45 63 255 255

[sb@svendborg-brakes.com](mailto:sb@svendborg-brakes.com)

[svendborg-brakes.com](http://svendborg-brakes.com) | [regalrexnord.com](http://regalrexnord.com)

The proper selection and application of products and components, including assuring that the product is safe for its intended use, are the responsibility of the customer. To view our Application Considerations, please visit <https://www.regalrexnord.com/Application-Considerations>.

To view our Standard Terms and Conditions of Sale, please visit <https://www.regalrexnord.com/Terms-and-Conditions-of-Sale>.

"Regal Rexnord" is not indicative of legal entity. Refer to product purchase documentation for the applicable legal entity. Regal Rexnord and Svendborg Brakes are trademarks of Regal Rexnord Corporation or one of its affiliated companies. © 2025 Regal Rexnord Corporation, All Rights Reserved. MCF-P-11434-SV-EN-A4 06/25