



## Twiflex Complete Hydraulic Brake Packages



# Twiflex Complete Hydraulic Brake Packages

## COMPACT HYDRAULIC BRAKE PACKAGES FROM TWIFLEX PROVIDE SINGLE-SOURCE CONVENIENCE FOR A WIDE RANGE OF INDUSTRIAL APPLICATIONS

A variety of standard and custom hydraulic brake packages are available from Twiflex to meet the static holding and dynamic (emergency) stopping duty requirements of many types of applications including elevators, ship loading gantry cranes, escalators, metal mill ladle cover hoists, amusement rides, conveyors, cold steel mills, ski lifts, and more.

Twiflex brake packages combine world-class Twiflex spring applied, hydraulically released caliper brakes with the state-of-the-art LCS hydraulic power unit mounted on a custom fabricated base/pedestal. These compact units feature a small footprint allowing them to fit into applications with limited space available.

Complete, ready-to-install brake assemblies from Twiflex provide time-saving convenience to OEMs while ensuring component compatibility and optimized performance.

## ADVANCED LCS HYDRAULIC POWER UNIT

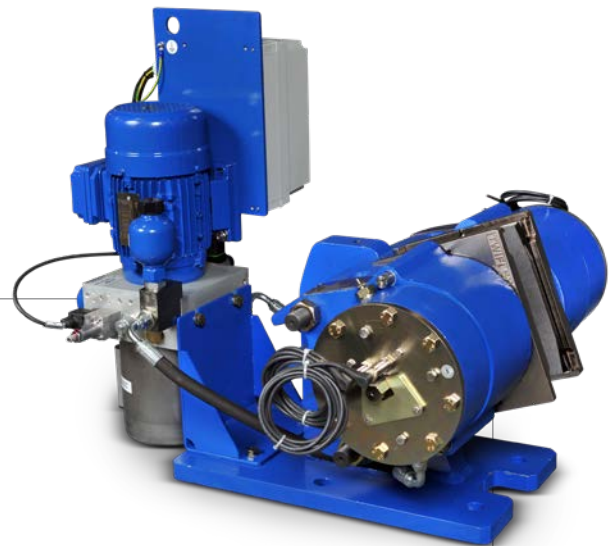
The Twiflex Type LCS is a compact hydraulic power unit designed to operate small caliper brakes in a proven, reliable package.

It provides on/off control of the spring applied ("passive") brakes, with a selectable "fast-approach/soft-braking" function integrated into the circuit as standard. This feature rapidly brings the brakes onto a factory-set touch pressure (pads in contact with the disc face) before the remaining pressure decays to zero and the brakes gradually apply.

A wide range of motor and auxiliary connection voltages can be accommodated. A terminal box permits the addition of a motor contactor if preferred. A hand-pump assembly allows manual release of the calipers in the event of complete power loss.

### Specifications:

- Motor: 0.9 kW, 480 VAC, 60 Hz
- Pump: 1.6 CC/REV
- Solenoid Coils: 24 VDC
- Pressure Switch: 24 VDC
- Wired to Terminal Box



## SUPERIOR CALIPER DISC BRAKE TECHNOLOGIES

Industry-leading Twiflex spring applied, hydraulically released caliper brake technologies are the core of these assemblies. Reliable Twiflex brakes are designed and built for long lasting, trouble-free performance.

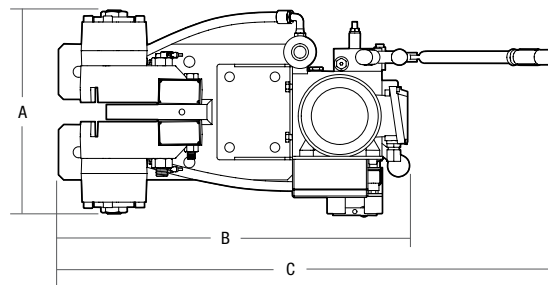
### All brakes feature:

- Modular construction for easy maintenance
  - Low pad pressures
- Easy set up and adjustment



## STANDARD TWIFLEX BRAKE PACKAGES

Twiflex standard brake packages are available with three different spring applied, hydraulically released brake models with braking force ratings ranging from 6.8 kN to 119 kN. These compact configurations are designed to meet the most common range of application requirements. All three packages are shipped complete with a hand pump, terminal box, and pressure gauge.



**Dimensions (mm)**

Model	A	B	C
MXSH	412	609.5	895
VCS	404	699.5	985
VKSD	676	749.5	1035
GMRSH	426	680.5	966

*Height: 750mm to top of handle*

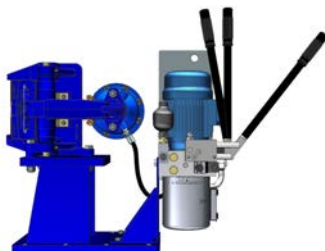
### ALL STANDARD PACKAGES INCLUDE:

- Brake Assembly (spring applied, hydraulically released)
- LCS Hydraulic Power Unit
- Mounting Base/Pedestal
- Hand Pump (including manual detents)
- Terminal Box
- Pressure Gauge (0-250 bar)



**Standard  
MXSH Disc Brake  
Caliper Package**

**Maximum Braking Force:**  
14.3 kN (3,215 lbf)



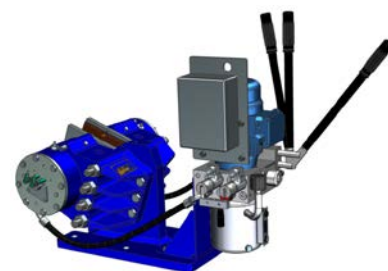
**Standard  
GMRSH Disc Brake  
Caliper Package**

**Maximum Braking Force:**  
36 kN (8,093 lbf)



**Standard  
VCS Disc Brake  
Caliper Package**

**Maximum Braking Force:**  
62 kN (13,938 lbf)



**Standard  
VKSD Disc Brake  
Caliper Package**

**Maximum Braking Force:**  
119 kN (26,752 lbf)

## CUSTOM ENGINEERED BRAKE PACKAGES

Twiflex engineers routinely configure custom brake package solutions to meet individual OEM specifications. A range of Twiflex spring applied, hydraulically released brake models can be incorporated into the design to achieve specific braking requirements. Certain size dual brake configurations can be utilized for higher braking torque applications.

Standard and custom discs/rotors (with or without hubs) as well as sensors can be included in application packages as needed.







**TWIFLEX™**

**Regal Rexnord**

[twiflex.com](http://twiflex.com)

+44 (0) 1234 350311

[regalrexnord.com](http://regalrexnord.com)

The proper selection and application of products and components, including assuring that the product is safe for its intended use, are the responsibility of the customer. To view our Application Considerations, please visit <https://www.regalrexnord.com/Application-Considerations>.

To view our Standard Terms and Conditions of Sale, please visit <https://www.regalrexnord.com/Terms-and-Conditions-of-Sale> (which may redirect to other website locations based on product family).

"Regal Rexnord" is not indicative of legal entity. Refer to product purchase documentation for the applicable legal entity.

Regal Rexnord and Twiflex are trademarks of Regal Rexnord Corporation or one of its affiliated companies.

© 2018, 2025 Regal Rexnord Corporation, All Rights Reserved. MCB-P-8454-TF-EN-US 04/25

 **RegalRexnord™**