

WR218 VAR22 & VAR23

SPRING APPLIED ELECTRICAL
& MANUAL RELEASED BRAKES



HIGHLY RELIABLE, SPRING APPLIED DEVICES

Units are highly reliable, spring applied devices designed as statically engaged/disengaged holding brakes. Compact WR218 VAR22 & 23 brakes are specifically designed for static engagement with manual release lever, with some emergency stop capability and optional engagement detection microswitch.

Warner Electric approaches every application from the standpoint of finding the best functional solution, variations of the WR218 VAR22 & 23 brake design can be customised to fit many applications.

TYPICAL APPLICATIONS

- Scooters/Wheelchairs
- Patient hoists
- Handheld power tools
- Conveyors
- Machine tools
- Robotics
- Floor sweepers/cleaners
- Automatic doors

FEATURES

- The WR218 VAR22 & 23 brakes can be used for static applications with E-Stop requirements
- Slim line enclosed design brake
- Maximum hub bore 11 mm
- 2 Nm to 5 Nm torque
- 78,5 mm diameter
- Optional microswitch
- Optional plastic lever cover



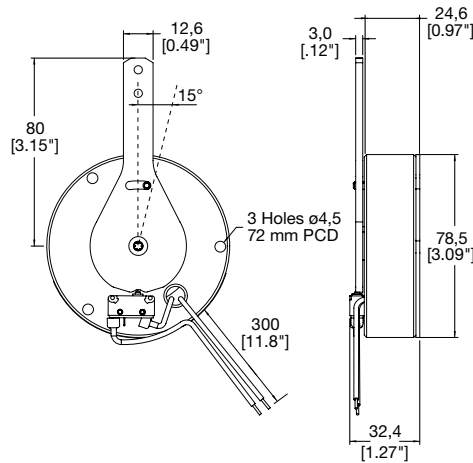
Spring Applied Electrical & Manual Released Brakes

WR218 VAR22 & VAR23



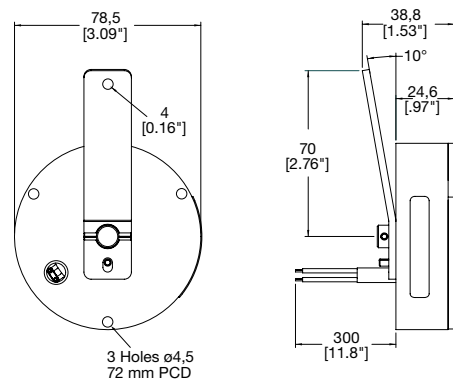
Flange Mount with Rotary Release Mechanism

VAR22



Flange Mount with Push/Pull Release Mechanism

VAR23



SPECIFICATIONS




(Other non-standard voltage, power, lead length or color available upon request and subject to extra charge)

Series	Static Torque	Temperature	Duty Cycle	Voltage	Power
WR218 VAR22 WR218 VAR23	From 2 to 6 Nm	Ambient -20 / +40°C	50% max.	12 VDC 24 VDC	14 Watt

OPTIONS

(Release mechanism lever - other lengths or shapes available upon request and subject to tooling charge)

WR218 VAR22		WR218 VAR23
Release Mechanism	Microswitch	Release Mechanism
CW and/or CCW (Not bi directional)	Microswitch only Wired in line or parallel	Push or pull

Hexagonal Hub Drive		Hexagonal Plastic Friction disc
Ø Options plain	Ø Options D drive	
 6,0 mm 6,35 mm [0.25"] 8,0 mm 9,5 mm [3/8"] 10,0 mm 11,0 mm	 8,0 mm 10,0 mm	

N.B.: Options to be selected with Warner Electric Sales Engineers.

Maximum motor shaft length = 8 mm [0.32"]

Subject to alteration without prior notice

WARNER ELECTRIC™

Regal Rexnord

www.warnerelectric-eu.com

7 rue Champfleury, B.P. 20095

St Barthelemy d'Anjou - France

+33 (0) 2 41 21 24 24

regalrexnord.com

www.warnerelectric.com

31 Industrial Park Road

New Hartford, CT 06057 - USA

815-389-3771

The proper selection and application of products and components, including assuring that the product is safe for its intended use, are the responsibility of the customer. To view our Application Considerations, please visit <https://www.regalrexnord.com/Application-Considerations>.

To view our Standard Terms and Conditions of Sale, please visit <https://www.regalrexnord.com/Terms-and-Conditions-of-Sale>

"Regal Rexnord" is not indicative of legal entity. Refer to product purchase documentation for the applicable legal entity.

Regal Rexnord and Warner Electric are trademarks of Regal Rexnord Corporation or one of its affiliated companies.

© 2023, 2025 Regal Rexnord Corporation, All Rights Reserved. MCF-P-7539-WE-EN-A4 11/25

RegalRexnord™