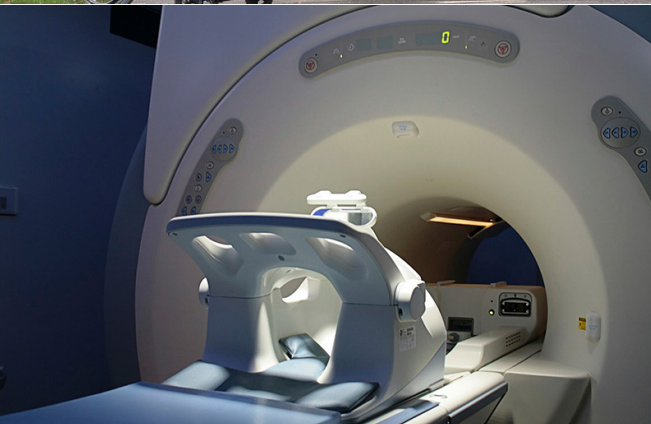


WR218 VAR00

SPRING APPLIED ELECTRICAL RELEASED BRAKES



Highly reliable, built-in-flexible design for static engagement with some emergency stop capability

Units are highly reliable, spring applied devices designed as statically engaged/disengaged holding brakes. These brakes provide low cycle rates stopping action in emergency situations. Compact WR218 VAR00 brakes are specifically designed for static engagement.

Warner Electric approaches every application from the standpoint of finding the absolute best functional solution. Built-in robust design allows WR218 VAR00 brakes to fit many applications.

TYPICAL APPLICATIONS

- Scooters/Wheelchairs
- Patient hoists
- Handheld power tools
- Conveyors
- Machine tools
- Robotics
- Floor sweepers/cleaners
- Automatic doors

FEATURES

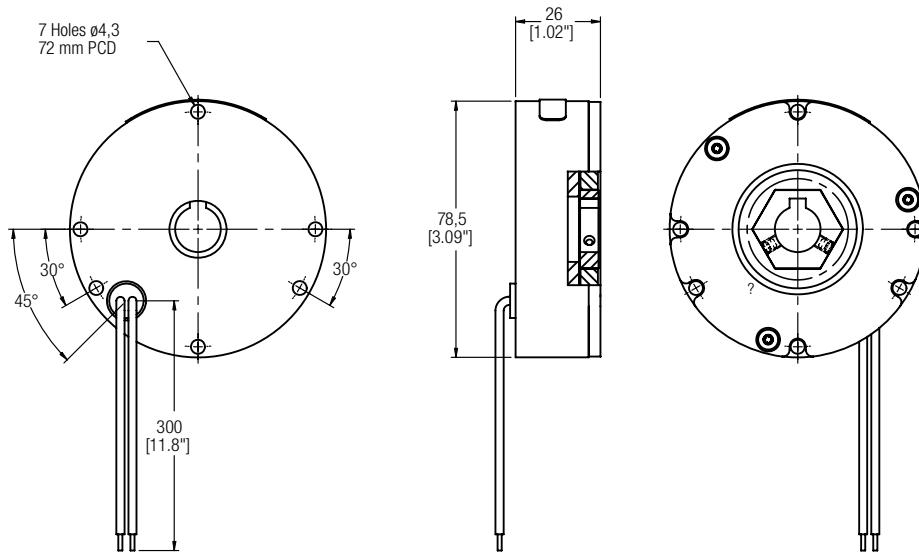
- Intended for use in static applications with E-Stop requirements
- Slim line brake
- Sealed design
- 2 Nm torque up to 5 Nm torque
- Maximum hub bore 11 mm
- 78,5 mm shell diameter



WR218 VAROO

SPRING APPLIED ELECTRICAL RELEASED BRAKES

FLANGE MOUNT



DIMENSIONS

(Other lengths, diameters or shapes upon request subject to tooling charge)

End plate outer Ø		Exit cable angle		Cable length	
A	78,5 mm - [3.09"]	B	45°	C	170 mm [6.69"]
					250 mm [9.84"]




SPECIFICATIONS

(Other non-standard voltage, power, lead length or color available upon request and subject to extra charge)

Static Torque	Temperature	Duty Cycle	Voltage	Power
From 2 Nm to 5 Nm	Ambient -20 / +40°C	50% max	12 VDC 24 VDC	14 Watt

OPTIONS

(To be selected with Warner Electric Sales Engineers)

Hexagonal Hub drive		Hexagonal Plastic Friction disc
Ø Options plain	Ø Options D drive	
 6,0 mm 6,35 mm (0.25") 8,0 mm 9,5 mm (3/8") 10,0 mm 11,0 mm	 8,0 mm 10,0 mm	

N.B.: Options to be selected with Warner Electric Sales Engineers
Maximum motor shaft length = 8 mm [0.32"]

Subject to alteration without prior notice

WARNER ELECTRIC™

Regal Rexnord

www.warnerelectric.com

31 Industrial Park Road
New Hartford, CT 06057 - USA
815-389-3771

regalrexnord.com

7 rue Champfleury, B.P. 20095
St Barthelemy d'Anjou - France
+33 (0) 2 41 21 24 24

The proper selection and application of products and components, including assuring that the product is safe for its intended use, are the responsibility of the customer. To view our Application Considerations, please visit <https://www.regalrexnord.com/Application-Considerations>.
To view our Standard Terms and Conditions of Sale, please visit <https://www.regalrexnord.com/Terms-and-Conditions-of-Sale>

"Regal Rexnord" is not indicative of legal entity. Refer to product purchase documentation for the applicable legal entity.

Regal Rexnord and Warner Electric are trademarks of Regal Rexnord Corporation or one of its affiliated companies.

© 2017, 2024 Regal Rexnord Corporation, All Rights Reserved. MCF-P-8457-WE-EN-US 09/24

RegalRexnord™