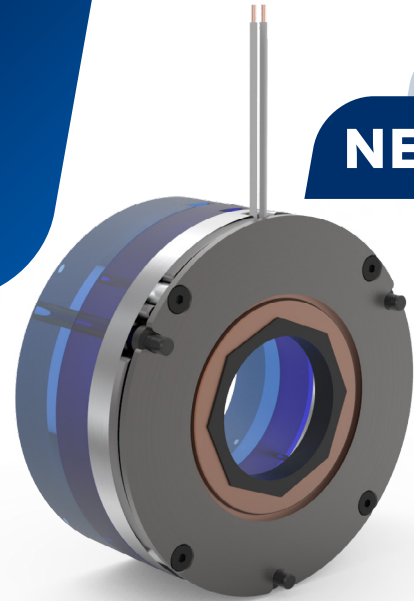


WR-Thin VAR00 (WR230, WR240, WR250)

SPRING APPLIED ELECTRICALLY
RELEASED BRAKES

NEW



ADAPTIVE DESIGN FOR DIRECT INTEGRATED HOLDING/ PARKING BRAKE

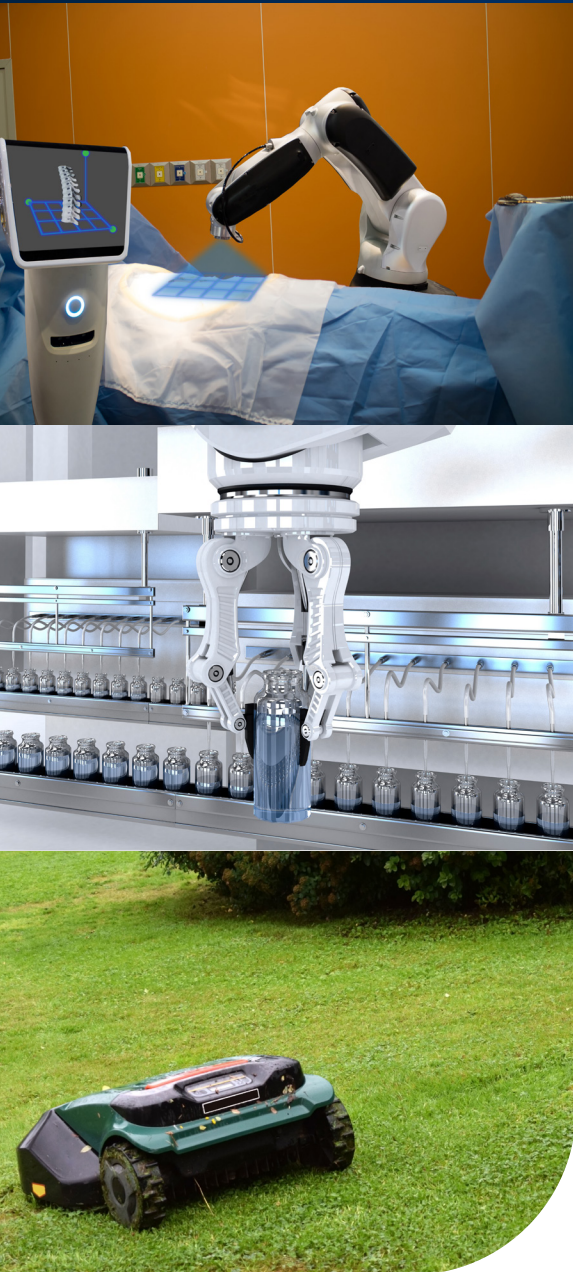
The WR Series is a compact and reliable on/off dry failsafe electromagnetic brake suitable for static engagement. Warner Electric created the WR Series to allow for seamless integration within directly mounted applications. These brakes come in a wide range of sizes, and the thickness can be customized to meet a variety of static torque requirements.

FEATURES

- 4 sizes with fixed diameter but different length/torque available
- Offers thin solutions down to 14mm
- 0.1 to 5.0Nm torque range
- Maximum inner diameter up to 35mm
- Available in magnet, flange, or rear mount configurations
- Reduces noise output and energy usage
- High quality corrosion protection
- RoHs, Reach, CE compliant

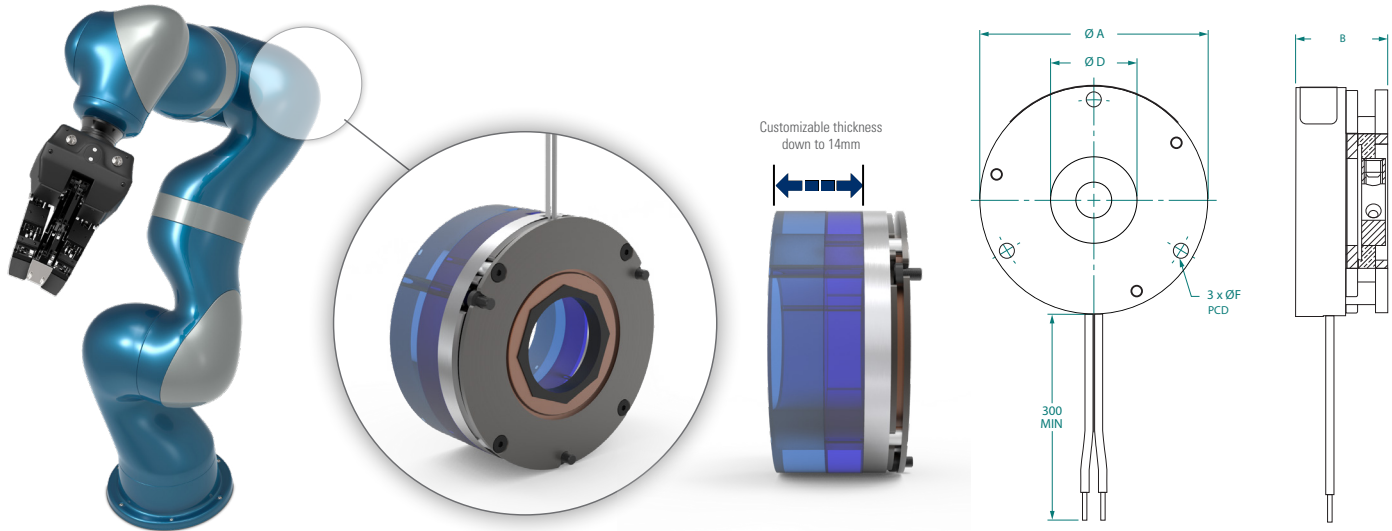
TYPICAL APPLICATIONS

- Wheel Drive/Mobile Robot
- Cobot
- Scara Robot
- Patient Mobility Devices
- Integrated drive solution with frameless motor



WR-Thin (WR230, WR240, WR250) VAR00

SPRING APPLIED ELECTRICALLY RELEASED BRAKES



Specifications

Temperature	Duty Cycle	Max Speed (rpm)	Backlash Hexagonal Disc	Hexagonal Hub Drive (3)
0 / +40 °C	50% max	3,000	2.5 °	Plain, D-drive, with keyway, O-ring

⁽³⁾ Hub sizes, bore-length-position to be selected with Warner Electric Assistance

Torque, Power and Dimension

Model No.	Static Torque (Nm)	Rated Power (W) ⁽¹⁾	B Max. Brake Length ⁽²⁾	A Max. Brake Diameter	F Nom. Mount PCD ⁽²⁾	Mount Screw ⁽²⁾	D Max. Inner Diameter
WR221	0.10	7.1 / 1.1	20.00	35.50	30.50	3 x M3	9.20
	0.35	6.0	30.00				
WR230	0.50	5.3	20.00	50.00	44.00	3 x M3	20.00
	1.50	11.0	28.00				
WR240	0.50	25.1 / 6.3	15.00	70.00	63.00	3 x M4	20.00
	2.50	11.0	19.20				
	3.50	11.0	26.20				
WR250	0.70	20.0 / 2.2	14.00	92.00	85.00	3 x M4	35.00
	2.00	22.0 / 2.4	20.00				
	5.00	28.6 / 3.2	25.00				

⁽¹⁾ Power based on 24VDC Voltage; Overexcitation required if 2 power values; For other voltages, consult Warner Electric Assistance

⁽²⁾ For other PCD, length calculation, screw types, encoder adaptation and mounting solutions, consult Warner Electric Assistance

WARNER ELECTRIC™

Regal Rexnord

www.warnerelectric.com

31 Industrial Park Road
New Hartford, CT 06057 - USA
815-389-3771

regalrexnord.com

7 rue de Champ eur - CS2009549182
St Barthelemy d'Anjou - France
+33 (0) 2 41 21 24 24

The proper selection and application of products and components, including assuring that the product is safe for its intended use, are the responsibility of the customer. To view our Application Considerations, please visit <https://www.regalrexnord.com/Application-Considerations>. To view our Standard Terms and Conditions of Sale, please visit <https://www.regalrexnord.com/Terms-and-Conditions-of-Sale>

"Regal Rexnord" is not indicative of legal entity. Refer to product purchase documentation for the applicable legal entity.

Regal Rexnord and Warner Electric are trademarks of Regal Rexnord Corporation or one of its affiliated companies.

© 2021, 2024 Regal Rexnord Corporation, All Rights Reserved. MCF P-8824-WE-EN-US 01/25

RegalRexnord™