

# EDI Spring-Applied Dual-Disc Brakes

FOR INTEGRATION INTO ELECTRIC  
FORKLIFT & AWP IN-LINE DRIVE SYSTEM

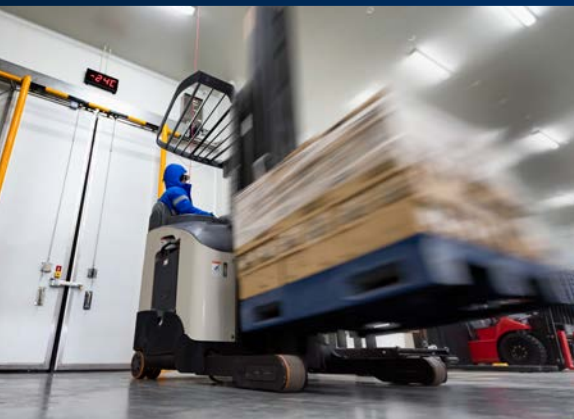


## PARKING AND EMERGENCY BRAKING FUNCTIONALITY

The EDI range is a spring-applied electromagnetic safety brake specially designed for easy integration into in-line vehicle drivetrains. Models utilize two friction discs for enhanced performance.

- High torque in reduced diameter - Torque 200Nm
- Special compact design allows the unit to fit in confined drivetrain space while providing better dynamic drive control for improved vehicle maneuverability
- Dual voltage coil controlled via PWM (Pulse Width Modulation) provides long service life with reduced power consumption
- Installed within enclosed drivetrain to prevent environmental contaminants ingress

Special friction material, designed for E-mobility applications, provides proven efficiency based on extensive prototype life-cycle testing. The select material offers the perfect balance between static torque for parking and dynamic torque for high energy service and emergency stopping over its service life.





# EDI Spring-Applied Dual-Disc Brakes

FOR INTEGRATION INTO  
ELECTRIC FORKLIFT & AWP  
IN-LINE DRIVE SYSTEM



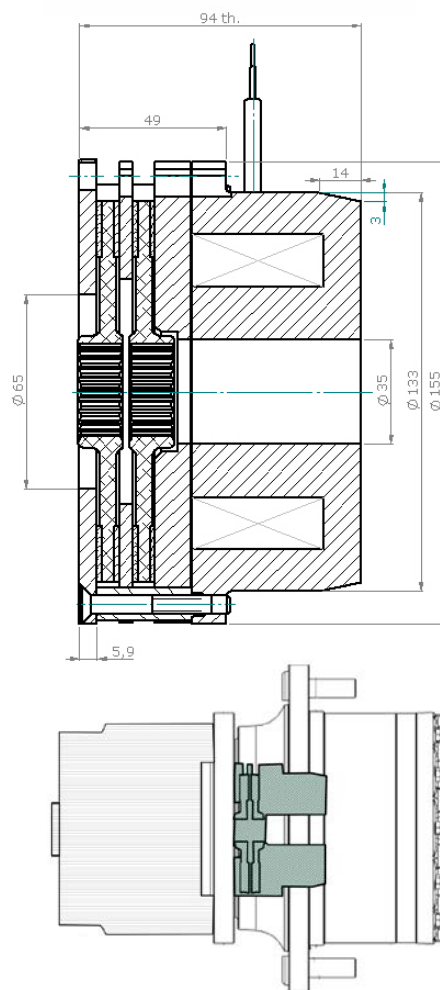
## SPRING APPLIED BRAKES FOR ELECTRIC DRIVES

### Double disc brake (PK35 diameter)

- Specially designed for integration within drivetrain
- Reduces total length of the drive assembly

## FEATURES

- One-piece design for easy assembly
- High torque in reduced diameter - Torque 200Nm
- Fully adapted design to fit inside the drivetrain
- Dual-voltage coil for power consumption reduction
- Longer battery life
- Overall lower maintenance costs
- Friction material selected for E-mobility applications
- Single-disc version is available
- WES Sensor option is also available



**WARNER** ELECTRIC™

### Regal Rexnord

[warnerelectric.com](http://warnerelectric.com)

#### Warner USA

449 Gardner Street  
South Beloit, IL - USA  
815-389-3771

[regalrexnord.com](http://regalrexnord.com)

#### Warner France

7 rue de Champfleury - CS20095  
49182 St Barthelemy d'Anjou - France  
+33 (0)2 41 21 24 24

The proper selection and application of products and components, including assuring that the product is safe for its intended use, are the responsibility of the customer. To view our Application Considerations, please visit <https://www.regalrexnord.com/Application-Considerations>. To view our Standard Terms and Conditions of Sale, please visit <https://www.regalrexnord.com/Terms-and-Conditions-of-Sale>

"Regal Rexnord" is not indicative of legal entity. Refer to product purchase documentation for the applicable legal entity.

Regal Rexnord and Warner Electric are trademarks of Regal Rexnord Corporation or one of its affiliated companies.

© 2023, 2025 Regal Rexnord Corporation, All Rights Reserved. MCF-P-9005-WE-EN-US 01/25

**RegalRexnord™**