

# FWW Overrunning Clutch Couplings

## DUAL-DRIVE STEAM TURBINE GENERATOR SET

### PROBLEM

A manufacturer of turbine generator sets required overrunning clutch couplings for use on in-line mounting of dual-drive fan systems to provide a smooth transfer of power from one drive/power system to another (electric motor to steam turbine and gear reducer).

The clutch coupling, mounted between the output of a steam turbine reducer and the fan, allows the fan to be initially started with an electric motor without back driving the steam turbine. When steam becomes available, the clutch coupling allows the steam turbine drive to come up to speed (over any amount of time) and automatically transfers power. When the speeds are matched, the starting electric motor can be turned off to save its utility cost.

### SOLUTION

Formsprag Model FWW 640 clutch couplings were selected with a torque capacity of 2,066 lb.ft. (2800 Nm). FWW clutch couplings are comprised of an FSO clutch with a disc coupling. Since the FSO clutch does not accommodate any misalignment, a coupling is incorporated for shaft-to-shaft, in-line mounting.

The FWW 640 features PCE™ sprags that are designed to overcome the effects of severe torsional and linear vibrations as well as high transient torque overloads. This Formsprag exclusive sprag design provides built-in protection from otherwise damaging overloads.

The low-maintenance FWW clutch coupling is torsionally rigid with no backlash. Units are designed for applications where the torque requirement is low in comparison to the shaft diameters. Both bore diameters in the coupling hubs are larger than the clutch bores.



### HIGHLIGHTS

- Comprised of an FSO clutch with a disc coupling
- Torque capacity of 2,066 lb.ft. (2800 Nm)
- Formsprag exclusive PCE™ sprag design

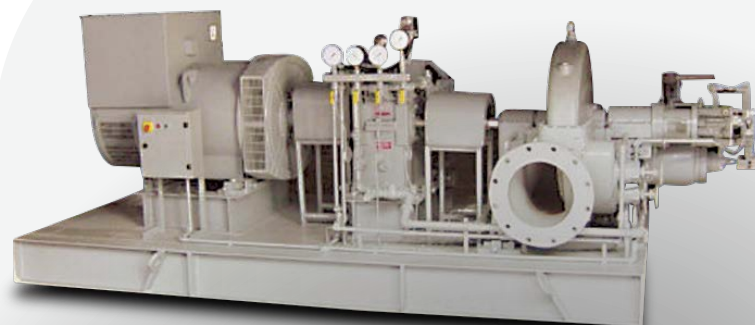
### Regal Rexnord

Contact us: 1-800-348-0880

[formsprag.com](https://formsprag.com) | [regalrexnord.com](https://regalrexnord.com)

The proper selection and application of products and components, including assuring that the product is safe for its intended use, are the responsibility of the customer. To view our Application Considerations, please visit <https://www.regalrexnord.com/Application-Considerations>. To view our Standard Terms and Conditions of Sale, please visit <https://www.regalrexnord.com/Terms-and-Conditions-of-Sale>.

"Regal Rexnord" is not indicative of legal entity. Refer to product purchase documentation for the applicable legal entity. Regal Rexnord and Formsprag are trademarks of Regal Rexnord Corporation or one of its affiliated companies.  
© 2023, 2025 Regal Rexnord Corporation, All Rights Reserved. MCCSS-P-7461-FC-EN-US 08/25



**FORMSPRAG CLUTCH™**