

Cruise Ship Ladder System

SERIES 51 GEARED CAM LIMIT SWITCHES

PROBLEM

A major global marine davit and winch OEM needed extremely reliable, IP66-rated limit switches for the passenger accommodation ladder on a German cruise ship. The 6200 kg (13,668 lb.) ladder is suspended from dual electric motor-driven davits that telescope simultaneously. The pair of synchronized electrical winches lower the ladder to the boarding deck. Then, one side lowers the ladder to the swivel platform, the other side positions the ladder down on the pier.

Geared cam limit switches, installed on both of the ladder's winch cable drums, set the exact stopping points for the ladder (in both stowed and lowered positions). The switches ensure the safe stopping of the ladder's cables, preventing potential damage.

SOLUTION

Based on many years of successful collaboration, the OEM contacted Stromag for a limit switch solution. After working closely with the OEMs engineering team to review the application requirements, Stromag ultimately recommended its IP66-rated **Series 51 Geared Cam Limit Switches**. The customer was pleased with the selection since the **Series 51** units provided the high level of precision and reliability required.

Series 51 geared cam limit switches are universal, mechanical switchgear that can map a wide range of shaft rotations to the angular displacements of the installed cam discs. Units are easy to install and adjust.

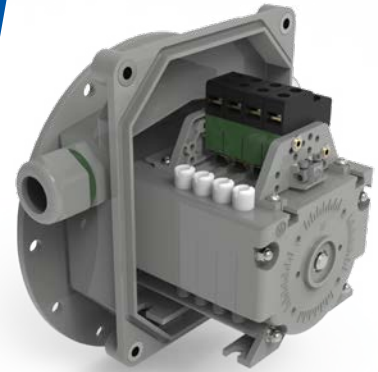
The models supplied featured IP66-rated housings that met the special regulations and safety standards that apply to passenger vessels.

Regal Rexnord

Hansastraße 120
59423 Unna - Germany
+49 2303 102-0
customercare.eu@regalrexnord.com
[stromag.com](https://www.stromag.com) | [regalrexnord.com](https://www.regalrexnord.com)

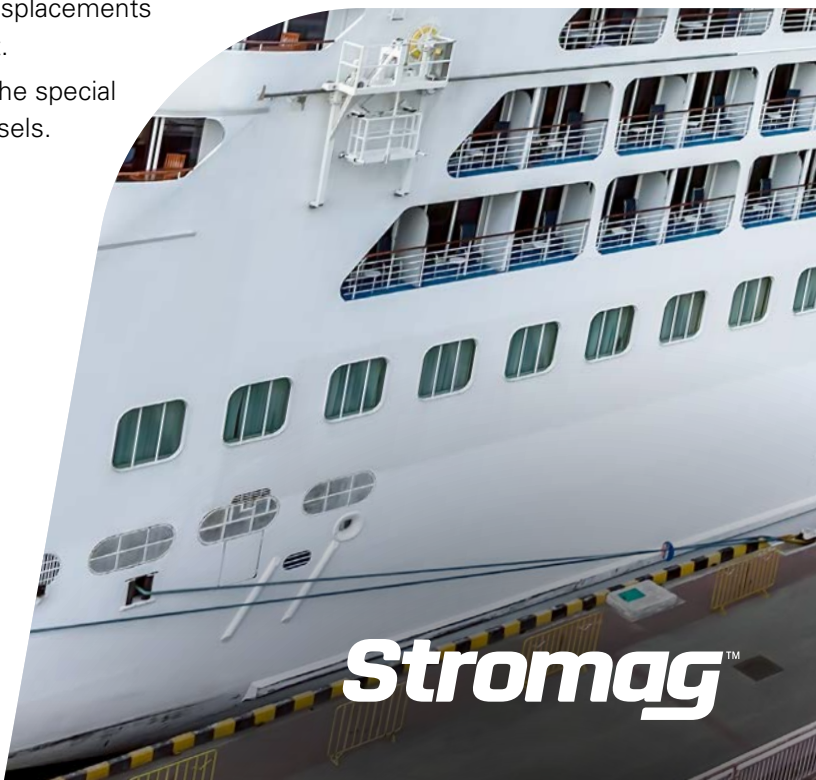
The proper selection and application of products and components, including assuring that the product is safe for its intended use, are the responsibility of the customer. To view our Application Considerations, please visit <https://www.regalrexnord.com/Application-Considerations>. To view our Standard Terms and Conditions of Sale, please visit <https://www.regalrexnord.com/Terms-and-Conditions-of-Sale>.

"Regal Rexnord" is not indicative of legal entity. Refer to product purchase documentation for the applicable legal entity. Regal Rexnord and Stromag are trademarks of Regal Rexnord Corporation or one of its affiliated companies.
© 2026 Regal Rexnord Corporation, All Rights Reserved.
MCCSS-P-8900-SG-EN-US 01/26



HIGHLIGHTS

- Geared cam limit switches
- Patented planetary gears
- Patented block adjustments
- Large cam disc diameter
- Easy to install and adjust
- IP66-Rated housing



Stromag™