

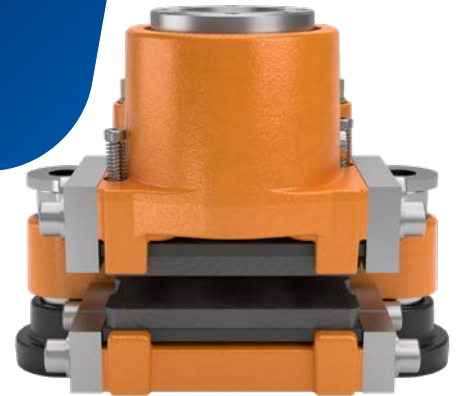
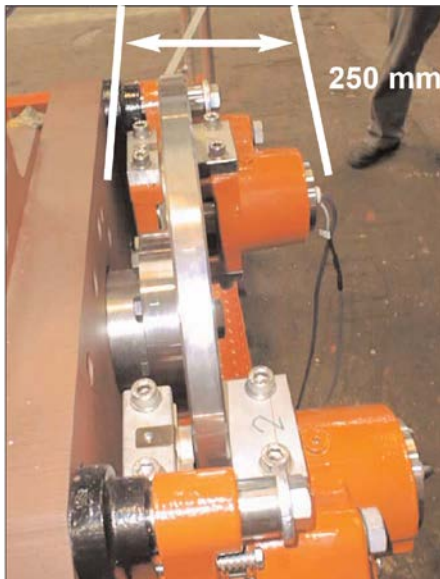
COMPACT BRAKING POWER FOR TOWER CRANES

PROBLEM

Tower cranes used in high-rise construction demand precise and reliable braking systems to manage high-speed gear rotations. A German crane manufacturer faced challenges fitting powerful service brakes into limited space on their crane gearboxes, while maintaining safety and performance standards.

SOLUTION

Svendborg Brakes provided a compact and effective solution by installing **BSFI 200 MS service brakes** on the driving gears of the crane winches. These monospring brakes were symmetrically grouped and flange-mounted directly onto the gearbox, delivering the required braking torque within a tight installation space of just 250 mm.



HIGHLIGHTS

- Compact Design
- Delivers up to 1850 Nm of braking force.
- Monospring Configuration
- Flange-Mounted Installation
- Proven Reliability
- Ideal for High-Speed Applications

Regal Rexnord

Jernbanevej 9
DK-5882 Vejstrup, Denmark
+45 63 255 255
sb@svendborg-brakes.com
[svendborg-brakes.com](https://www.svendborg-brakes.com) | [regalrexnord.com](https://www.regalrexnord.com)

The proper selection and application of products and components, including assuring that the product is safe for its intended use, are the responsibility of the customer. To view our Application Considerations, please visit <https://www.regalrexnord.com/Application-Considerations>.

To view our Standard Terms and Conditions of Sale, please visit <https://www.regalrexnord.com/Terms-and-Conditions-of-Sale>.

"Regal Rexnord" is not indicative of legal entity. Refer to product purchase documentation for the applicable legal entity. Regal Rexnord and Svendborg Brakes are trademarks of Regal Rexnord Corporation or one of its affiliated companies.
© 2025 Regal Rexnord Corporation, All Rights Reserved.
MCCSS-11296-SV-EN-A4 10/25



SVENDBORG BRAKES™