

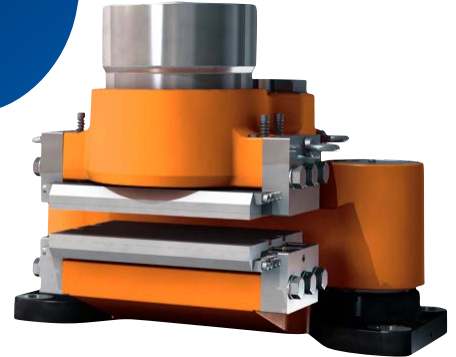
PRECISION BRAKING FOR POST PANAMAX CRANES

PROBLEM

Super Post Panamax container cranes operate under extreme mechanical loads during hoisting and boom movements. These high-capacity cranes require powerful and reliable braking systems to ensure safe lifting, precise control, and operational efficiency in busy port environments.

SOLUTION

To meet these demands, each crane was equipped with **2 x BSFA 640-MS40S-100 brakes** for the Main Hoist and **1 x BSFA 645-MS40S-100 brake** for the Boom Hoist. These brakes are engineered for high torque and durability, providing dependable performance in critical lifting operations.



HIGHLIGHTS

- High Torque Capacity
- Custom Configuration
- Reliable Performance
- Durable Construction
- Proven Application



Regal Rexnord

Jernbanevej 9
DK-5882 Vejstrup, Denmark
+45 63 255 255
sb@svendborg-brakes.com
[svendborg-brakes.com](https://www.svendborg-brakes.com) | [regalrexnord.com](https://www.regalrexnord.com)

The proper selection and application of products and components, including assuring that the product is safe for its intended use, are the responsibility of the customer. To view our Application Considerations, please visit <https://www.regalrexnord.com/Application-Considerations>.

To view our Standard Terms and Conditions of Sale, please visit <https://www.regalrexnord.com/Terms-and-Conditions-of-Sale>.

"Regal Rexnord" is not indicative of legal entity. Refer to product purchase documentation for the applicable legal entity. Regal Rexnord and Svendborg Brakes are trademarks of Regal Rexnord Corporation or one of its affiliated companies.
© 2025 Regal Rexnord Corporation, All Rights Reserved.
MCCSS-11318-SV-EN-A4 10/25



SVENDBORG BRAKES™