

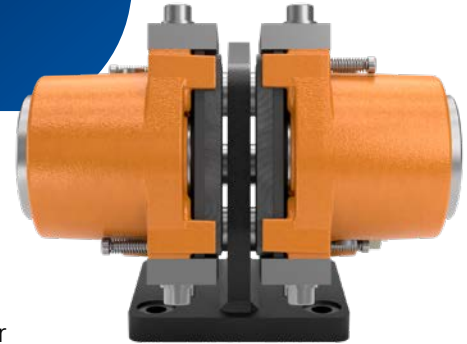
UPGRADED BRAKING BOOSTS CONTAINER LIFT SAFETY

PROBLEM

Harbour RTG (Rubber-Tyred Gantry) cranes rely on precise braking systems to safely manage container lifting operations. The existing thruster-operated brakes were no longer meeting performance expectations, especially under the demands of the main hoist motion.

SOLUTION

To enhance safety and reliability, the braking system was upgraded to **BSFI 200 brakes** from Svendborg Brakes. These brakes are specifically designed for high-performance applications and were installed on the main hoist of the Harbour RTGs, ensuring smoother and more secure container handling.



HIGHLIGHTS

- Replaced outdated thruster-operated brakes with modern BSFI 200 units.
- Installed on the main hoist responsible for container lifting.
- Enhanced braking control and reliability for critical lifting operations.
- Designed for demanding port environments and continuous use.



Regal Rexnord

Jernbanevej 9
DK-5882 Vejstrup, Denmark
+45 63 255 255
sb@svendborg-brakes.com
[svendborg-brakes.com](https://www.svendborg-brakes.com) | [regalrexnord.com](https://www.regalrexnord.com)

The proper selection and application of products and components, including assuring that the product is safe for its intended use, are the responsibility of the customer. To view our Application Considerations, please visit <https://www.regalrexnord.com/Application-Considerations>.

To view our Standard Terms and Conditions of Sale, please visit <https://www.regalrexnord.com/Terms-and-Conditions-of-Sale>.

"Regal Rexnord" is not indicative of legal entity. Refer to product purchase documentation for the applicable legal entity. Regal Rexnord and Svendborg Brakes are trademarks of Regal Rexnord Corporation or one of its affiliated companies.
© 2025 Regal Rexnord Corporation, All Rights Reserved.
MCCSS-11320-SV-EN-A4 10/25



SVENDBORG BRAKES™