

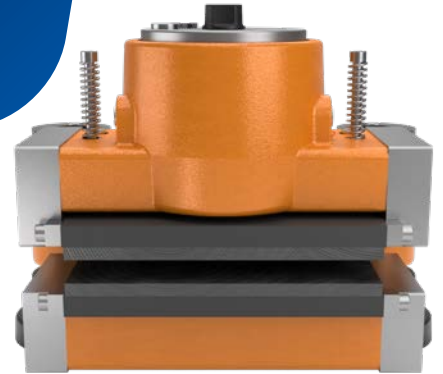
EMERGENCY BRAKING FOR LADLE CRANES

PROBLEM

Ladle cranes operate in high-risk environments, handling molten materials in steel production. These cranes require a reliable emergency braking system to ensure safety during critical operations and prevent uncontrolled movement in case of system failure.

SOLUTION

Svendborg Brakes installed an emergency brake system on a ladle crane in South Africa, featuring the **BSFI 3100 MS brake** paired with a hydraulic power unit option. This system provides dependable braking performance tailored for heavy-duty industrial applications.



HIGHLIGHTS

- **BSFI 3100 MS Brake:** Engineered for emergency braking in high-load environments.
- **Hydraulic Power Unit Option:** Enhances control and responsiveness.
- **Fail-Safe Design:** Spring-applied, hydraulically released for maximum safety.
- **Industrial-Grade Reliability:** Ideal for steel production and ladle crane operations.
- **Custom Integration:** Designed to meet specific operational and environmental needs.



Regal Rexnord

Jernbanevej 9
DK-5882 Vejstrup, Denmark
+45 63 255 255
sb@svendborg-brakes.com
[svendborg-brakes.com](https://www.svendborg-brakes.com) | [regalrexnord.com](https://www.regalrexnord.com)

The proper selection and application of products and components, including assuring that the product is safe for its intended use, are the responsibility of the customer.

To view our Application Considerations, please visit
<https://www.regalrexnord.com/Application-Considerations>.

To view our Standard Terms and Conditions of Sale, please visit
<https://www.regalrexnord.com/Terms-and-Conditions-of-Sale>.

"Regal Rexnord" is not indicative of legal entity. Refer to product purchase documentation for the applicable legal entity. Regal Rexnord and Svendborg Brakes are trademarks of Regal Rexnord Corporation or one of its affiliated companies.
© 2025 Regal Rexnord Corporation, All Rights Reserved.
MCCSS-11407-SV-EN-A4 10/25



SVENDBORG BRAKES™