

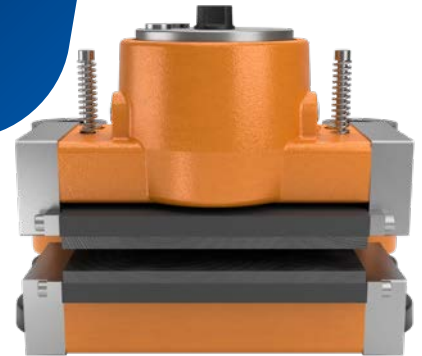
HYDRAULIC BRAKING POWER FOR STEEL WORK CRANES

PROBLEM

Steel work cranes require robust and adaptable braking systems that can handle heavy loads and operate reliably in demanding industrial environments. The challenge lies in integrating high-performance brakes with hydraulic systems that offer flexibility and control..

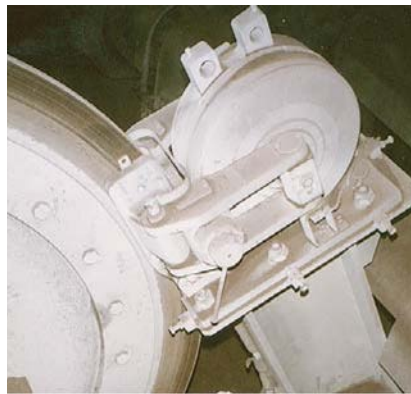
SOLUTION

Svendborg Brakes provided a tailored solution by installing 2 x BSFH 500 brakes on a steel work crane in Luxembourg. These brakes were paired with a BSFI 3100 MS system, featuring a hydraulic power unit option to ensure responsive and reliable braking performance.



HIGHLIGHTS

- Heavy-duty, spring-applied, hydraulically released
- Integrated with a hydraulic power unit for enhanced control and responsiveness
- Custom Hydraulic Options
- Reliable Performance
- Compact Integration



Regal Rexnord

Jernbanevej 9
DK-5882 Vejstrup, Denmark
+45 63 255 255
sb@svendborg-brakes.com
[svendborg-brakes.com](https://www.svendborg-brakes.com) | [regalrexnord.com](https://www.regalrexnord.com)

The proper selection and application of products and components, including assuring that the product is safe for its intended use, are the responsibility of the customer.

To view our Application Considerations, please visit
<https://www.regalrexnord.com/Application-Considerations>.

To view our Standard Terms and Conditions of Sale, please visit
<https://www.regalrexnord.com/Terms-and-Conditions-of-Sale>.

"Regal Rexnord" is not indicative of legal entity. Refer to product purchase documentation for the applicable legal entity. Regal Rexnord and Svendborg Brakes are trademarks of Regal Rexnord Corporation or one of its affiliated companies.
© 2025 Regal Rexnord Corporation, All Rights Reserved.
MCCSS-11408-SV-EN-A4 10/25



SVENDBORG BRAKES™