

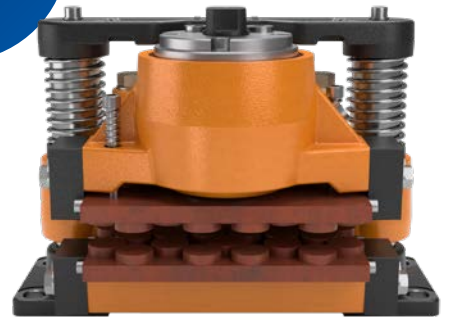
PARKING AND EMERGENCY BRAKE ON TOWER CRANE

PROBLEM

Tower cranes used in tight urban construction zones, such as the J80 luffing crane, require compact and highly reliable braking systems. These cranes must maintain secure positioning and respond instantly during emergency stops, especially in space-constrained environments.

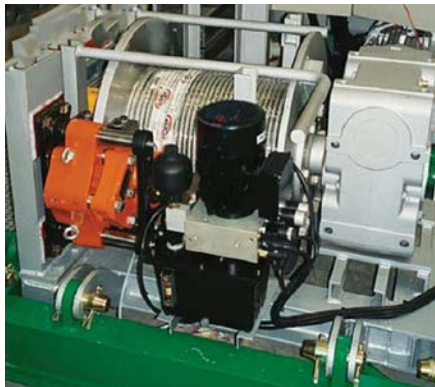
SOLUTION

Svendborg Brakes equipped the boom hoist of the J80 tower crane with a **BSFI 330 MS brake**, serving as both a parking and emergency brake. The system's compact design, high reliability, and rapid release time of just 0.1 seconds made it the ideal choice for this demanding application.



HIGHLIGHTS

- **BSFI 330 MS Brake:** Dual-function brake for parking and emergency use.
- **Compact Design:** Perfect for cranes operating in confined construction areas.
- **Fast Response:** Brake release time of 0.1 seconds ensures quick action.
- **Reliable Hydraulic Unit:** Engineered for consistent performance under load.
- **Optimized for Luffing Cranes:** Supports safe boom hoist operations in vertical lifting environments.



Regal Rexnord

Jernbanevej 9
DK-5882 Vejstrup, Denmark
+45 63 255 255
sb@svendborg-brakes.com
[svendborg-brakes.com](https://www.svendborg-brakes.com) | [regalrexnord.com](https://www.regalrexnord.com)

The proper selection and application of products and components, including assuring that the product is safe for its intended use, are the responsibility of the customer. To view our Application Considerations, please visit <https://www.regalrexnord.com/Application-Considerations>. To view our Standard Terms and Conditions of Sale, please visit <https://www.regalrexnord.com/Terms-and-Conditions-of-Sale>.

"Regal Rexnord" is not indicative of legal entity. Refer to product purchase documentation for the applicable legal entity. Regal Rexnord and Svendborg Brakes are trademarks of Regal Rexnord Corporation or one of its affiliated companies. © 2025 Regal Rexnord Corporation, All Rights Reserved. MCCSS-11411-SV-EN-A4 09/25



SVENDBORG BRAKES™