

# LEADING WIND ENERGY SOLUTIONS



## ROTOR & PITCH MOTOR BRAKES

Powerful engineered brakes used for stopping and holding. Designed for minimal air gap for fast braking. Available from Stromag™, Svendborg Brakes™, Stearns™, Warner Electric™ and Twiflex™.



## YAW & YAW MOTOR BRAKES

Specially developed brakes primarily used for holding and controlled yawing. Designed to minimize noise during yaw. Available from Stromag, Svendborg Brakes, Twiflex and Warner Electric.



## ROTOR LOCKS & LOCKING DEVICES

Rotor locks are designed to prevent the shaft from turning, providing stability during maintenance or assembly. In contrast, locking devices, such as shrink discs, transmit torque from the main shaft back into the gearbox, ensuring efficient power transfer and capability to handle large output torques. Available from Stromag, Svendborg Brakes, and Tollok™.



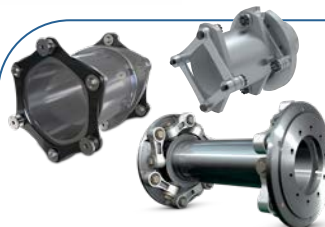
## HYDRAULIC POWER UNITS — APPLICATION SPECIFIC

Proven designs through thousands of installations around the world. Available in a variety of configurations. Available from Stromag, Svendborg Brakes and Twiflex.



## LIMIT SWITCHES

Stromag geared cam limit switches are specially designed to limit the yaw and pitch rotation of a wind turbine.



## COUPLINGS

Custom-designed couplings capable of transmitting high torques at high speeds while accepting significant levels of angular, radial and axial misalignment. Available from Centa™, Jaure™, and Ameridrives™.

Regal Rexnord stands at the forefront of innovation in the wind market, offering comprehensive power transmission solutions that drive efficiency, reliability, sustainability, and safety.

## BRANDS

### SVENDBORG BRAKE

[www.svendborg-brakes.com](http://www.svendborg-brakes.com)

### Stromag™

[www.stromag.com](http://www.stromag.com)



[www.regalrexnord.com/brands/centa](http://www.regalrexnord.com/brands/centa)

### JAURE™

[www.regalrexnord.com/brands/jaure](http://www.regalrexnord.com/brands/jaure)

### TOLLOK™

[www.rexnord.com](http://www.rexnord.com)

### AMERIDRIVES™

[www.ameridrives.com](http://www.ameridrives.com)

### STEARNS™

[www.stearnsbrakes.com](http://www.stearnsbrakes.com)

### WARNER ELECTRIC™

[www.warnerelectric.com](http://www.warnerelectric.com)

### TWIFLEX™

[www.twiflex.com](http://www.twiflex.com)

# LEADING WIND ENERGY SOLUTIONS



## YAW DISC RESURFACING

Save time and money with our up-tower yaw resurfacing services that eliminates the need for removal of the nacelle.

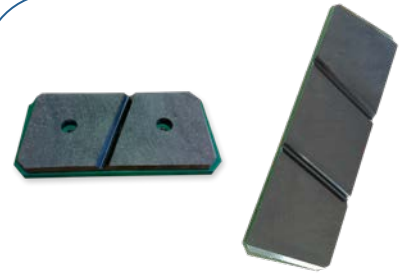
Our resurface tools fits various turbine models. Contact your representative for information. Available from Svendborg Brakes™.



## SERVICE TOOLS

The lifting tool for yaw brakes reduces service time by up to 50% while simultaneously improving personnel safety.

Our groove tool reduces yaw noise by making precision cuts across the disc and reduces brake dust glazing by channeling the dust off the disc. Available from Svendborg Brakes.



## GREEN BRAKE PADS

Designed to help reduce the impact on our environment. The brake pads are developed in accordance to REACH standards. Available from Svendborg Brakes.



## R&D & TEST CENTER

Extensive testing in our full scale test center is second to none and your guarantee for top quality. We have a strong tradition for R&D investments and invaluable accumulated know-how. Our focus on innovation and testing is core to our company. Available from Svendborg Brakes and Tollok™.



## GENUINE SPARE PARTS & ACCESSORIES

Authentic spare parts are worth far more than compromising on price, quality and safety. We guarantee all our products meet or exceed original supplied equipment and safety standards. Available from Svendborg Brakes.



## SERVICE ORGANIZATION

Service Support line is available 24/7/365. Our technicians are available for scheduled preventative maintenance and emergency situations. Available from Svendborg Brakes.

## Regal Rexnord

Contact us: +45 63 255 255  
800-626-2120 (US)

[www.regalrexnord.com/wind-solutions](http://www.regalrexnord.com/wind-solutions)

[regalrexnord.com](http://regalrexnord.com)

The proper selection and application of products and components, including assuring that the product is safe for its intended use, are the responsibility of the customer. To view our Application Considerations, please visit <https://www.regalrexnord.com/Application-Considerations>.

To view our Standard Terms and Conditions of Sale, please visit <https://www.regalrexnord.com/Terms-and-Conditions-of-Sale>



Look for the Authentic hologram and QR code on our genuine supplied aftermarket products.

"Regal Rexnord" is not indicative of legal entity. Refer to product purchase documentation for the applicable legal entity. Regal Rexnord, Svendborg Brakes, Stromag, Centa, Jaure, Tollok, Ameridrives, Stearns, Warner Electric, and Twiflex are trademarks of Regal Rexnord Corporation or one of its affiliated companies.

© 2021, 2025 Regal Rexnord Corporation, All Rights Reserved. MCLC-P-8537-C-EN-US 09/25

**RegalRexnord**